



# EM1000U Series Mount

## CEILING/PEDESTAL/WALL MOUNT, MEDIUM DUTY, ENCLOSURE



### Product Features

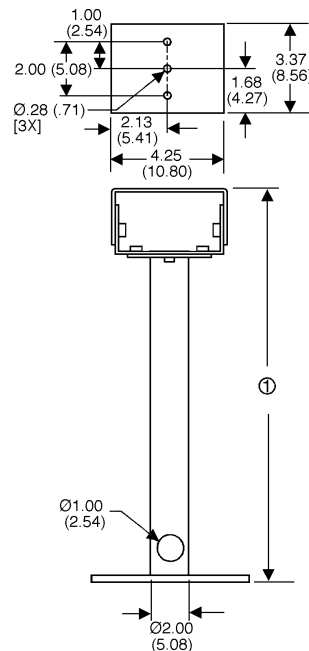
- Adjustable Swivel Head
- Support up to 40 lb (18 kg)
- Cable Feedthrough Holes Conceal Wiring
- Accommodates Medium Duty Pelco Enclosures with 2-Inch (5.08 cm) Mounting Hole Pattern
- Ceiling, Pedestal or Wall Mounting

The EM1009U/EM1015U/EM1900U are the newest in our line of medium duty enclosure mounts. Capable of supporting loads up to 40 pounds (18 kg) and designed for ceiling/pedestal and wall applications, these versatile mounts can be used with all Pelco enclosures with a 2-inch (5.08 cm) mounting hole pattern.

The EM1009U/EM1015U are ceiling/pedestal mounts and the EM1900U is a 90 degree wall mount. The ceiling/pedestal mounts are available in two lengths; 9 inches (22.86 cm) (EM1009U) and 15 inches (38.1 cm) (EM1015U). The EM1900U extends 15.45 inches (39.24 cm) from the wall to allow unlimited positioning of the enclosure.

Constructed of aluminum, all three mounts feature an adjustable swivel head which allows mechanical positioning of the enclosure. In addition, there is a 1-inch (2.54 cm) diameter cable feedthrough hole and openings in the top and bottom to conceal the wiring.

These universal medium duty mounts are just another example of the many products we have designed for your ease of installation, while at the same time providing an aesthetically pleasing appearance.



NOTES:  
 ① EM1009U MOUNT — 9.03 (22.94)  
 EM1015U MOUNT — 15.03 (38.18)

NOTE: VALUES IN PARENTHESSES ARE CENTIMETERS; ALL OTHERS ARE INCHES.

EM1009U/EM1015U DIMENSION DRAWING



## TECHNICAL SPECIFICATIONS

### MODEL

EM1009U	Universal medium duty ceiling/ pedestal mount with manually adjustable swivel head. 9-inch (22.86 cm) length
EM1015U	Universal medium duty ceiling/ pedestal mount with manually adjustable swivel head. 15-inch (38.1 cm) length
EM1900U	Universal medium duty 90° wall mount with manually adjustable swivel head; extends 15.45 inches (39.24 cm) from wall

### MECHANICAL

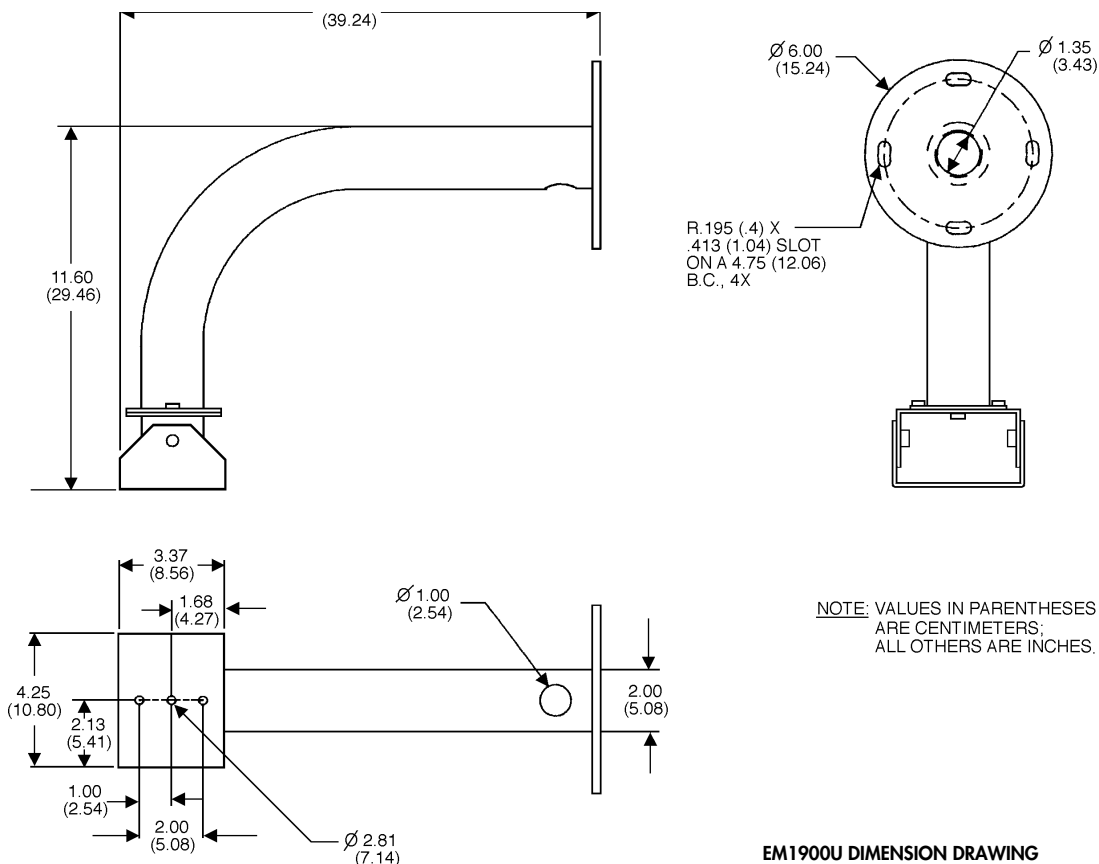
Pan Adjustment	360°
Tilt Adjustment	75° (up or down)

### GENERAL

Enclosure Mounting Suggested Mounting Method	Two 1/4-20 mounting bolts (supplied)	
Cable Feedthrough	Secure to solid surface with a minimum of two (2) 1/4-20 fasteners (not supplied). (For maximum stability use four fasteners.)	
Maximum Load Locking Method	One (1) 1-inch (2.54 cm) diameter hole at base of mount 40 lb (18 kg) 3/8-16 hex head bolts on adjustable swivel head	
Construction Finish	Aluminum Gray polyester powder coat	
Dimensions	See dimension drawings	
Weight	<u>Unit</u>	<u>Shipping</u>
EM1009U	3 lb (1.35 kg)	4 lb (1.81 kg)
EM1015U	4 lb (1.81 kg)	5 lb (2.26 kg)
EM1900U	4.5 lb (1.95 kg)	5 lb (2.26 kg)

### CERTIFICATIONS

- ◆ UL listed to Standard 2044



EM1900U DIMENSION DRAWING

Specifications subject to change without notice.  
©Copyright 1997, PELCO. All rights reserved.