

Mounting Instructions for Storability Garage Wall Storage Center Model# 1740 (Rev-0609)

Inventory all components and please read these instructions thoroughly before starting installation.

Should you have questions or require installation help, please contact Triton Products directly at 440-248-5480 or 877-963-2990.

If this product was shipped directly to you, you must report damaged shipping cartons within 24 hours of delivery to Shipping/Delivery Company

Missing and Damaged parts must be reported within 5 business days from receipt of delivery.

Tools needed for this installation (Not Supplied with Kit)

Level	Pencil or marker	Phillips Head Screw Driver	Electric Drill	1/2" Standard Drill Bit for hollow wall installation
Safety Glasses	5/16" Masonry Bit for Concrete block Installation	1/16" Standard Drill bit for Stud wall Installation	Tape measure	

Parts Listing

P/N#	Qty=	Description	Qty=	Hardware
10-01815T	2	Top Track Sections	10	2-1/2" Toggle Bolts
10-0280-1T	3	Top Hang Rail with hanging Slots	6	3-1/2" Toggle Bolts
10-0280-2T	3	Bottom Hang Rail Section	16	White Plastic Wall Anchors
10-0280-3T	3	Hang Rail Connector with 2 bolts	16	2-1/4" Wood Screws
10-0480	2	31" Wire Shelf	16	Toggle Bolt Expanders
10-0336	2 Sets	Hanging Brackets for Wire Shelf	1	Hex Head Wrench for Hang Rails
10-0580	2	31" Combination Rail	20	Assorted LocHooks for Tool Board
10-0880	2	LocBoard Tool Board	4	Plastic Hanging Bins
10-1901	1	31" Wire Basket	6	Assorted Combination Rail Hooks
10-2001	1 Set	Hanging Brackets for Wire Basket		

We have included all mounting hardware for hollow and concrete block wall installations. It is not necessary to mount system to wood studs. Each system will require 63.5 lineal Inches of wall space for mounting and a minimum ceiling height of 7-1/2 feet high for proper clearance.

Drill Diameter Listing:

Drill diameter sizing for: Hollow wall Installations; Use 1/2" Standard Drill Bit

Drill diameter sizing for: Concrete wall Installations; Use 5/16" Masonry Drill Bit

Drill diameter sizing For: Wood Stud wall Installations; Use 1/16" Standard Drill Bit for pilot holes

Preparation for Top Track Installation: (Image A-1)

1. If installing in a corner, leave 1" space between side wall and top track.
2. Determine the maximum height of storage you would like available above your system. (See Fig. A-1). For an 8 foot ceiling; 78" off the floor leaves 18" of storage above and 81" leaves 15" storage above.
3. Using a tape measure, mark your desired height off the floor with a 4" Long pencil mark.
4. (Refer to Fig. A-1 & A-2) Using a level, align top of top track with your pencil mark in step 3. With top track level, mark the center of each hole location on your wall. **(Note: Before starting to drill holes; always make sure all screw hole locations do not fall in line with electrical wires, Duct work or plumbing inside of your wall. If a potential problem exists, reposition and re-mark screw hole locations.)**
5. (Fig. A-2) Drill hole locations marked using the correct drill bit sizing and type listed above. Should you come in contact with wood studs, stop and mark the hole with X and after drilling all other holes come back and drill holes marked with an X using a 1/16" bit for pilot hole for wood screws.

Attachment of Top Track to Wall Surface: (Fig. A-3)

6. **For hollow walls; (Fig. A-3) Use 2-1/2" long toggle bolts with expanders. Make sure to insert all toggle bolts through top track and attach all toggle bolt expanders, insert toggle bolts with expanders into holes in wall before starting step 9.**
7. **For concrete walls; use white plastic wall anchors and 2-1/4" long wood screws. Install all plastic wall anchors in each pre-drilled hole location before starting step 9.**
8. **For wood studs; use 2-1/4" long wood screws. Always install wood screws last and there will be no need to use plastic wall anchors.**
9. Using a level and holding top track in place tighten one of the end toggle bolts or wood screws until snug. (Allow for track movement).
10. Making sure top track is still level, tighten toggle bolt or install wood screw on the opposite end until fully secure.
11. Install and fully tighten all remaining toggle bolts and wood screws.

Hang Rail Assembly: (Fig. B-1)

12. Assemble (2) 63" long hang rail assembly consisting of 3 parts, (A) top rail section with hang slots. (B) Bottom rail section and (C) Hang rail connector with 2 bolts.

Hanging Hang Rails: (Fig. B-2 and B-3). Note: When installing hang rails, always work from left to right or right to left one hang rail at a time.

13. Slip your 2 hang rail assemblies onto front lip of top track.
 14. (Ref. to Fig. B-4) Slide hang rail sections to opposite end of track.
 15. Starting from one end and making sure the top outside edge of the hang rail is firmly against end stop in top track.
 16. Using a level to make sure hang rail is straight and mark the centers of the 2 bolt holes locations in the bottom section onto wall surface.
 17. Drill both holes locations marked in Step 16 using the correct drill bit for your type of wall surface. (Refer to Drill Diameter Listing above.) **(Note: Should you come in contact with internal wood studs; stop drilling and use a 1/16" bit to create pilot hole for wood screw installation.)**
- ### Attaching Hang Rails to Wall; (Fig. B-3 through B-7)
18. **For hollow walls; (fig B-7) Use 3-1/2" long toggle bolts with expanders. Insert both toggle bolts through bottom portion of hang rail and attached all toggle bolt expanders, insert toggle bolt with expanders into holes in wall before starting step 21.**
 19. **For concrete walls; use white plastic wall anchors and 2-1/4" long wood screws. Install all plastic wall anchors in holes before starting step 21.**
 20. **For wood studs; use 2-1/4" long wood screws.**

21. Using a level and keeping hang rail straight, tighten the top bolt first and then the bottom.

Second Hang Rail Attachment: (Fig. B-4)

22. Slide the second hang rail to the opposite end of top track. Inside spacing should be 30.375" (30-3/8") between the two hang rail sections.

23. Using your (1) 31" wide LocBoard Steel tool board as a spacer, install at center point on both hand rail section using their inside slot positions. Note: always make sure tool board is installed level and in the same slot positions on both hang rails before marking holes locations.
24. Using a level, make sure second hang rail is straight and that you have easy removal of tool boards from both hang rails, mark the centers of both bolt holes in the bottom hang rail section on your wall surface.
25. Complete installation by drilling out holes marked in step 24 and repeat steps 18-21.
26. **Accessory Installation:** (View figures C-1 through C-3.) *Always make sure you're installing all accessories level and into the identical height slots in both hang rails. Binding can occur if not level. All accessories will be installed in the inside slot positions of each hang rail. If accidental binding occurs use **soft rubber mallet** to help remove accessory and protect the paint.*
 - a. **Combination Rail:** (Note: Combination rails are capable of spanning hang rail sections if needed.) While level insert combination rail back mounting prongs/tabs into the inside slot position in each hang rail and slide down to secure.
 - b. **Combination Rail Hooks and Bins.** Loosen pressure screw in mounting plate of hook so that upper and lower back prongs can easily slip on to the 2 front mounting surfaces of combination rail. Once in position tighten pressure screw to prevent sliding. Slide hang bins back tab over top mounting surface of combination rail.
 - c. **LocBoard Tool Boards.** (Installs in hang rails with inside spacing of 30.375" I.D.) Insert tool boards back mounting prongs/tabs into inside slot positions of both hang rails and slide down to secure.

Safety Load limits on accessories should never exceed: 125 pounds for Wire and Steel shelves, 18 pounds on a single LocBoard hook, 150 pounds on combination rails sections or 35 pounds per combination rail hooks, 75 pounds per Top track hooks, 60 pounds for wire baskets and 75 pounds for recycle and storage sack.

Do not place sharp or pointed objects inside of recycle and storage bags. Rips or tears are not covered under warrantee.

Warrantee Information: All steel components are guaranteed free of defect for the life of the product. Rips, tears or punctures of recycle bag and storage sacks are not covered under warranty. Return defective parts only postage pre-paid along with copy of your original purchase receipt to:

**Triton Products
30700-D Carter Street
Solon, Ohio 44139**

Phone 440-248-5480 or 877-963-2990

Liability: Triton Products and or it Resellers liability is limited to 100% of the purchase price of the product.

Visit www.tritonproducts.com to view Storability Accessories and other great products.

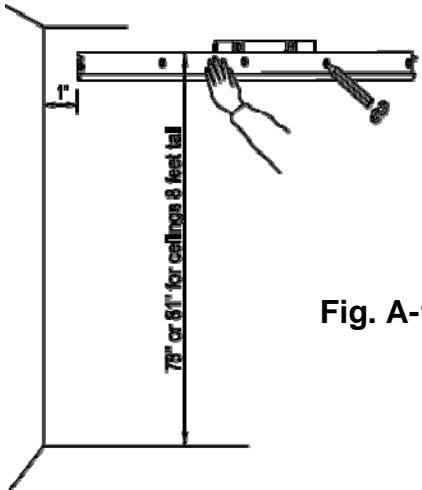


Fig. A-1



Fig. A-2

Drill Diameter
 Hollow Wall: 1/2"
 Concrete Block : 5/16"

- A: Toggle Bolt Expander
- B: 2 1/2" Toggle Bolt
- C: 3 1/2" Toggle Bolt
- D: Plastic Wall Anchor
- E: 2 1/4" Wood Screw

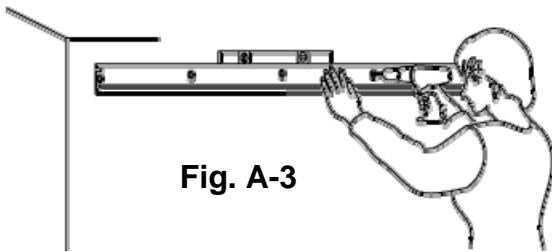
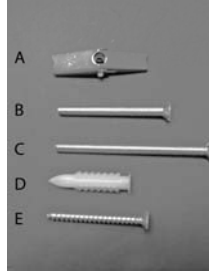


Fig. A-3

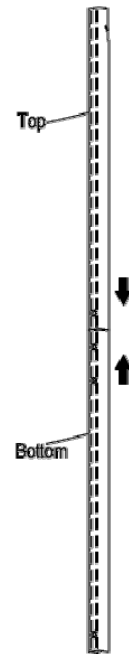
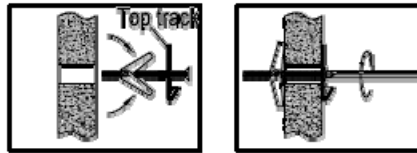


Fig. B-1

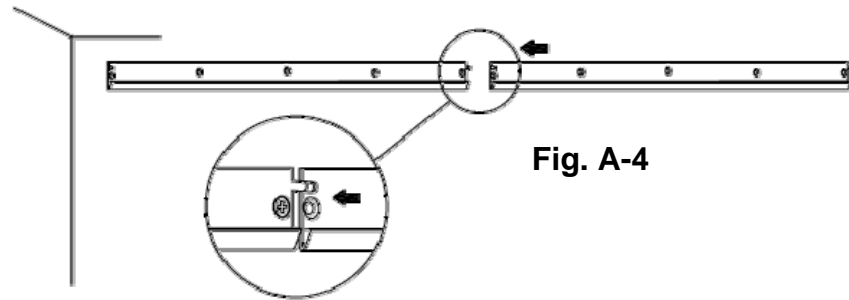


Fig. A-4

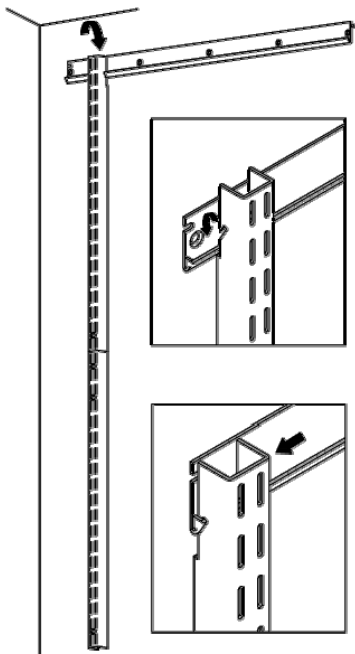
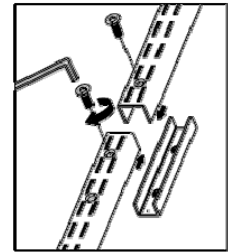


Fig. B-2

Fig. B-3

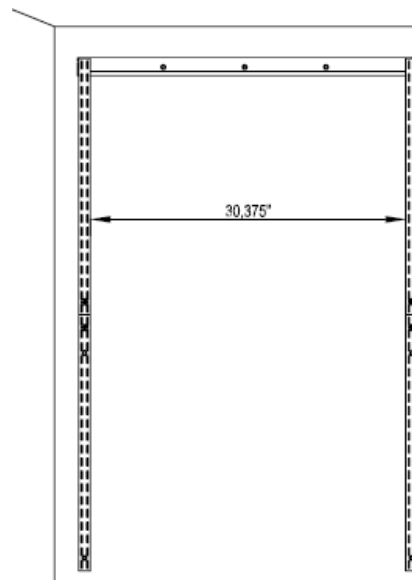


Fig. B-4

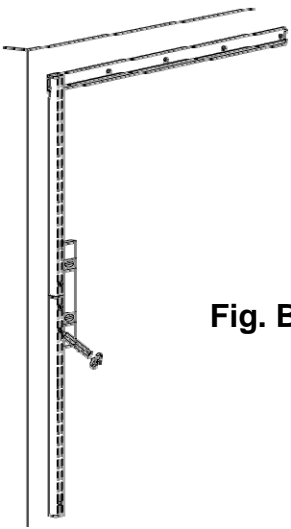


Fig. B-5



Drill Diameter
Hollow Wall: 1/2"
Concrete Block : 5/16"

Fig. B-6

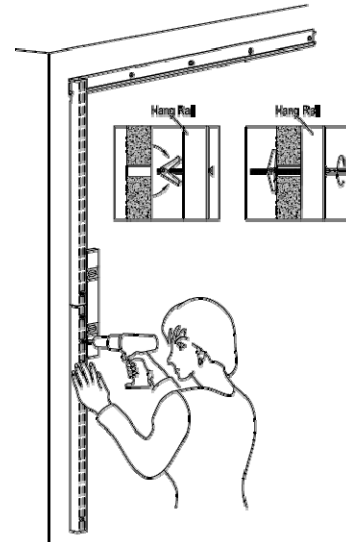


Fig. B-7

Fig. C-1 Wire Shelf Bracket installation and hanging installation

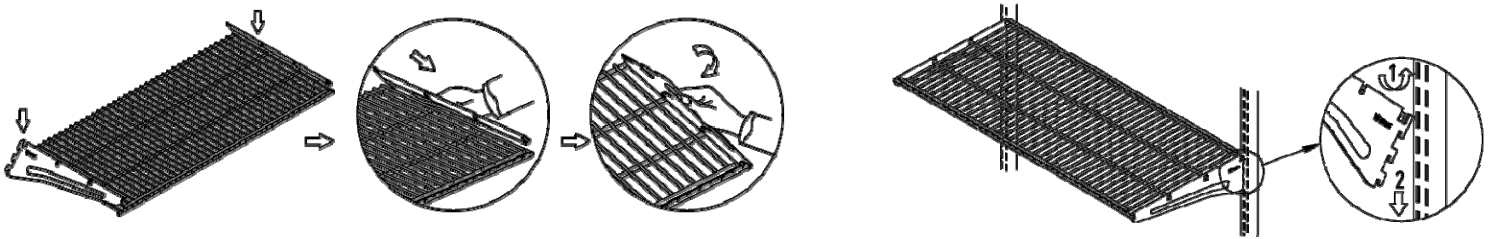


Fig. C-2 Wire Bracket Bracket installation and hanging installation

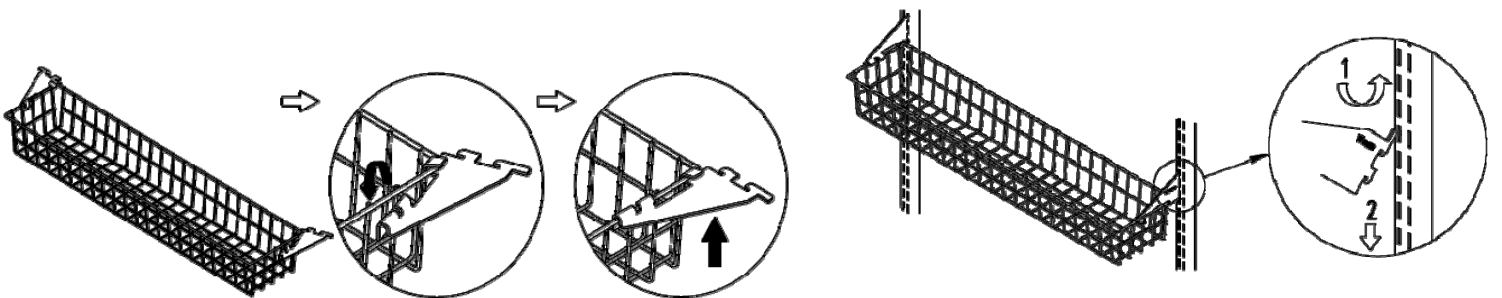


Fig. C-3 Metal Shelf Bracket installation and hanging installation

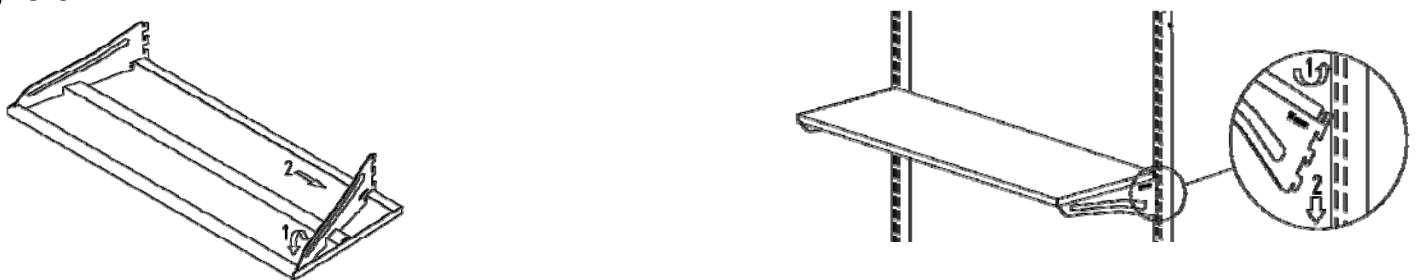


Fig. C-4
LocHook
Installation

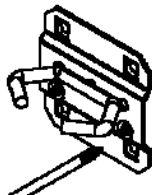


Fig. C-5
Combination
Rail Hook
Installation

