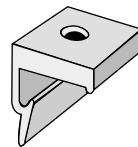
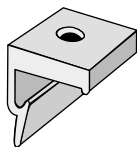
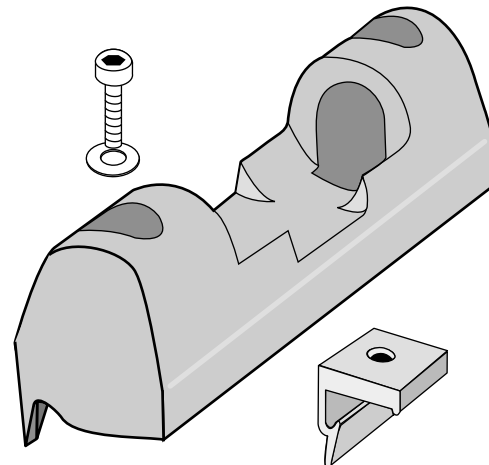
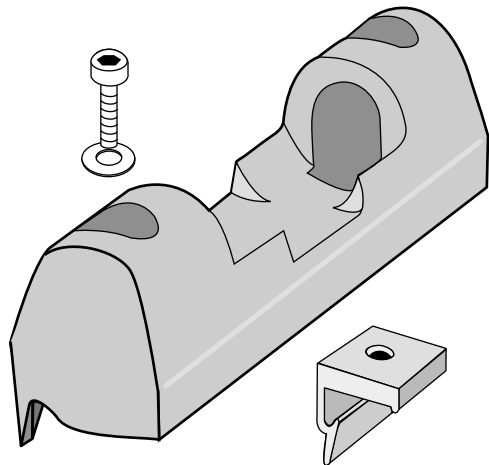
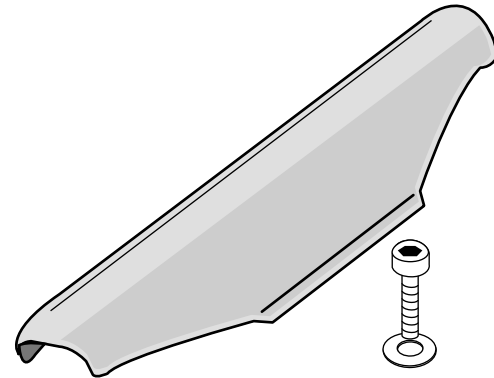
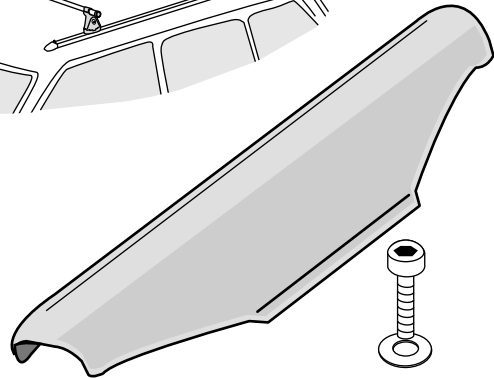
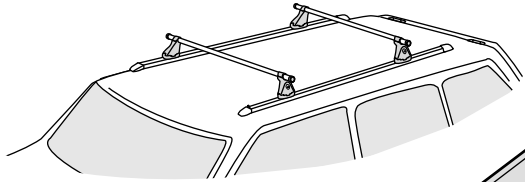


# YAKIMA Landing Pad #2

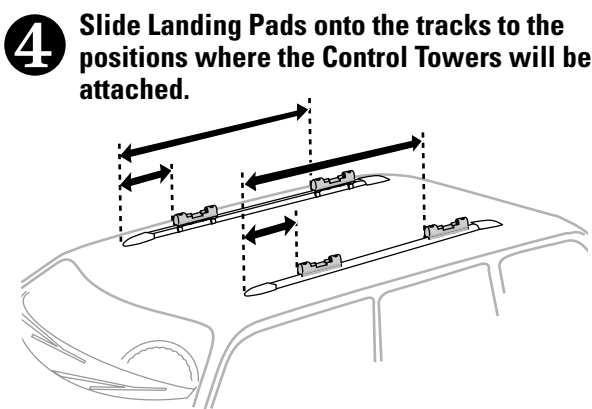
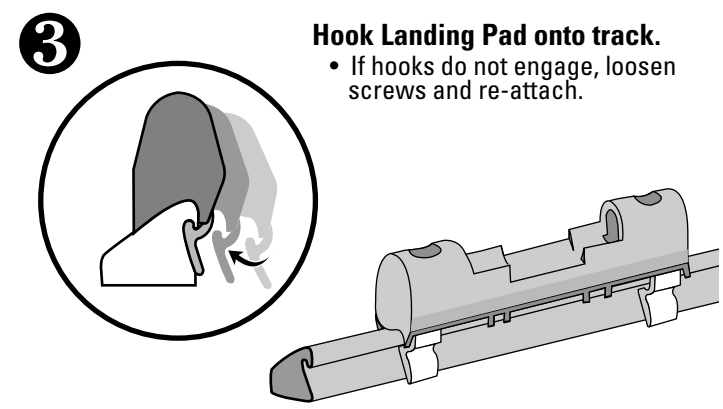
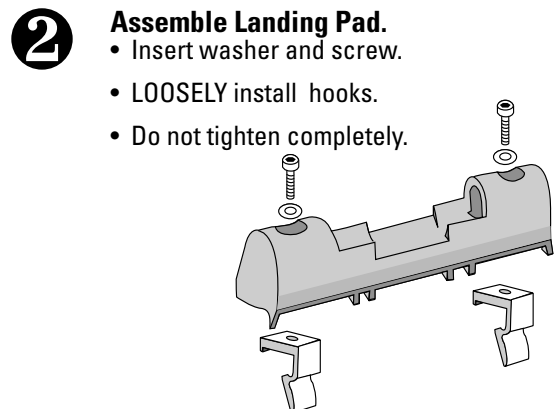
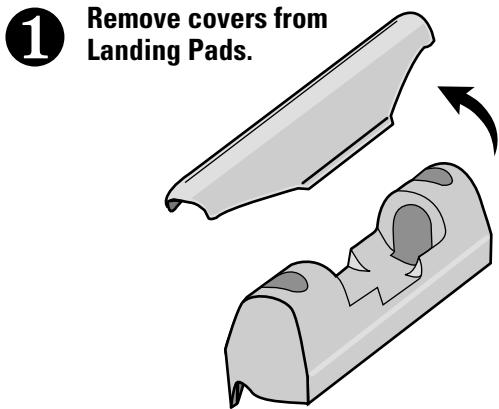


Refer to YAKIMA Control Tower instructions for important warning and load limitations, and YAKIMA's limited warranty.



**You may need to remove your vehicle's factory crossbars and slats. Check to see if Landing Pad location will cause interference. Refer to your vehicle's owner's manual for details on factory rack removal.**

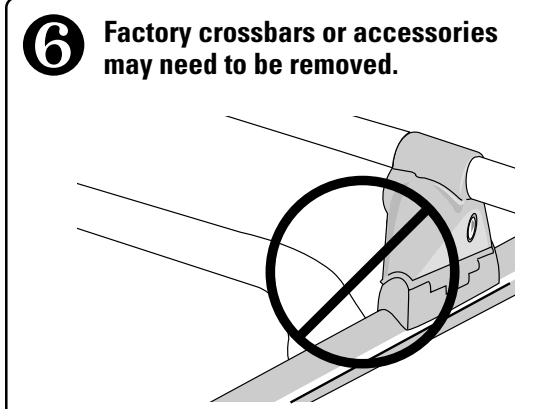
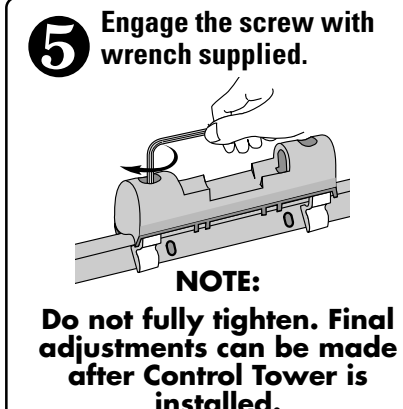
**RECOMMENDED TOOL:  
Measuring Tape**



**!**

**Hooks must engage track before fully tightening screws.**

*Base should be flush to track.*



**7** Installation Tips:

**CROSSBAR SPREAD:**

*The distance between the Yakima crossbars is determined by the accessories you wish to carry.*

*The Crossbar Spread Table (Fit List or Catalog) will tell you how much crossbar spread your accessories require.*

**LOAD LOCATION:**

*For ease of loading, consider where the most convenient placement of your load would be before completing the installation.*

**USE CAUTION WHEN OPENING YOUR HATCH.**

On some vehicles, hatch interference with accessories is unavoidable.

**!** YOU ARE NOW READY TO PROCEED TO CONTROL TOWER INSTRUCTIONS.