



X2
LASER
Sub-Compact

Operator Manual

 **INSIGHT**
TECHNOLOGY

insightlights.com

 **OPTICS**
PLANET INC

MADE IN THE USA

WARNINGS

1. Before handling any firearm with the X2 Laser (X2L) **read and understand** the entire contents of your firearm manual and the X2L manual, especially the safety precautions and procedures for safe firearms handling.
2. **Failure** to follow the correct safety precautions and safe firearms handling techniques outlined in your firearm and X2L Operator's manuals when handling a firearm with the X2L can result in serious injury, damage to property, or **death**.
3. **Always** practice safe firearms handling techniques when handling a firearm with or without the X2L.
4. **Never** point a firearm with or without the X2L attached, at anything or anyone that you do not intend to shoot.
5. Once the X2L is attached to a firearm, the firearm will be pointed at anything that the X2L is directly illuminating. **Do not** point the X2L at anything or anyone that you do not intend to shoot. The X2L is designed to produce a sufficient amount of light to allow someone in a low light environment to be safely illuminated and identified without the need to point the X2L, and the attached firearm, directly at that individual. The light from the X2L can be pointed in a safe direction at a wall, floor, or ceiling and "bounced" onto the darkened silhouette for identification purposes, thus avoiding the need to point the firearm directly at an individual. The X2L can be de-focused for wide-angle illumination.
6. The ON/OFF switch on the X2L allows you to operate the switch **without** placing your finger inside the trigger guard. **Always** keep your fingers **off** the trigger and **outside** the trigger guard until you are ready to fire the firearm.
7. **Always** check to see the chamber of the firearm is empty or "clear" before attempting to mount or dismount the X2L. Follow the "clearing" procedures as set forth in the manual for your firearm.
8. **Always** remove the X2L from the firearm when performing maintenance or cleaning the X2L or when replacing bulbs or batteries.
9. **Failure** to follow any of the safety warnings listed above when handling a firearm and/or the X2L can be dangerous and can result in serious injury, damage to property, or **death**.

10. **Do Not** operate the X2L around cleaning solvents or flammable/combustible materials. Avoid use of the X2L in environments involving gasses or a flammable atmosphere, such as evaporated gasoline. **Do Not** use the X2L in areas where gasoline, paints, solvents, or other flammable liquids are stored.
11. The X2L should be tested periodically during periods of non-use to ensure that it is functioning properly. When anticipating use of and reliance upon the X2L, check the X2L beforehand to ensure that it is in proper working order.
12. Proper functioning of the X2L is dependent upon a fully-charged battery. Use care when handling batteries. Any battery has the potential to leak harmful chemicals that can damage skin, clothing, or the inside of the X2L. To avoid risk of injury, do not let any material leaked from a battery come in contact with eyes or skin. Do not expose batteries to excessive heat. Follow battery manufacturers' instructions as to proper handling, storage, and disposal of batteries.
13. **CAUTION: Never** place the light on its face (bulb down) while on. The bulb generates intense heat and could cause damage to the X2L or the surface it is on.

WARNING
DO NOT STORE THE X2L WITH THE BATTERY INSTALLED.

SAFETY SUMMARY



**LASER RADIATION :
AVOID DIRECT EXPOSURE TO BEAM**

VISIBLE LASER

Output Power: <5 mW

Wavelength: 640±40nm

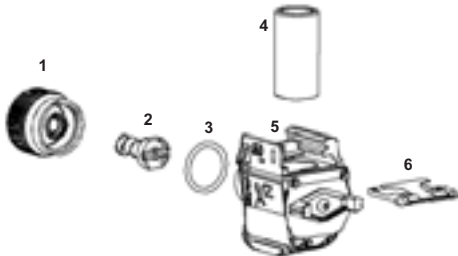
Class IIIa Laser Product

X2L Warning/Aperture/Mode Label



- Do not stare into the visible laser beam.
- Do not look into the visible laser beam through binoculars or telescopes.
- Do not point the visible laser beam at mirror-like surfaces.
- Do not shine the visible laser beam into other individuals' eyes.

X2L PARTS DIAGRAM



Item	Description	Spare Part #
1	Bezel	CFL-009
2	Bulb Assembly	CFL-010
3	O-Ring	AS-568A-016
4	Battery (One 3 Volt Lithium)	CR2
5	X2L Body	N/A
6	Top Cover	MTV-008

MOUNTING



1. With your “cleared and safe” firearm in your left or right hand, hold the X2L in the opposite hand with the light bulb facing in the direction of the muzzle of the firearm, away from your body and in a safe direction.
2. Bring the X2L up and toward the firearm, aligning the grooves of the X2L and the grooves on the firearm; slide the X2L straight back until the latch engages into the locking slot located between the grooves of the firearm. There will be an audible “click” when the X2L is secured.
3. To check for positive engagement of the X2L to the firearm, attempt to slide the X2L forward. You should not be able to move the X2L forward without disengaging the lock. The X2L is now mounted.

DISMOUNTING

1. Place your free hand under the X2L with your index finger and thumb on each end of the latchbar. Pull down with the index finger and thumb to disengage the latchbar from the weapon and push downward and forward until the X2L is clear of the grooves on the firearm.
2. Always store the X2L in the box provided or in a pouch on your equipment belt.

Pull Down on
Latch Bar



CAUTION

NEVER put your hand in front of the muzzle of a firearm.
Be sure to push the X2L down and away from the muzzle of the pistol when removing it.

BATTERY REPLACEMENT

Step 4



Step 5

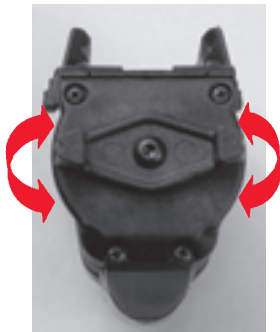


1. With the unit dismounted from the weapon, hold the X2L in one hand and with the thumb of the free hand, press down on the top cover of the light.
2. Slide the top cover back and away from the body of the light.
3. Remove the 3V lithium battery (CR2) from the X2L by turning the light upside down.
4. To replace the 3V lithium battery, insert it into the body of the X2L, positive end down.
5. Repeat Step 2 in reverse order to reinstall the top cover. You will hear an audible “click” when the cover is secured in place.
6. Be sure the light is functioning by turning the unit on and manipulating the switch either up or down. The light should turn ON. If not, check to be sure that the top cover is secure. If the light still does not operate, remove the top cover and verify that the battery is installed correctly.

Manufacturer recommends you DO NOT store the X2L with the battery installed.

SWITCH OPERATION

The switch is part of the backplate and no attempt should be made to disassemble it. The switch has two positions, Momentary-ON and Steady-ON.



MOMENTARY-ON POSITION:

Pressing & holding the switch in the Momentary-On position will make the light turn on and stay on until the switch is released.

- Right hand: push up with the trigger finger
- Left hand: push down with the trigger finger

STEADY-ON POSITION:

Pressing the switch in the Steady-On position will make the light turn on and stay on until the switch is pushed back to the OFF position.

- Right hand: push down with the trigger finger
- Left hand: push up with the trigger finger

CAUTION

Never place the light on its face (bulb down) while on. The bulb generates intense heat and could cause damage to the X2L or the surface it is on.

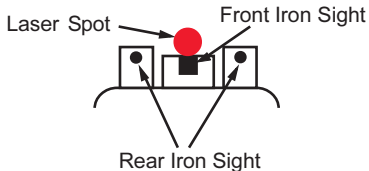
ZEROING PROCEDURES

Zeroing the X2L using a 25 meter range and target:

Visible Aiming Beam

1. Set up a target at 25 meters with a clearly visible aiming point.
2. Mount the X2L onto the weapon's accessory mounting rail (see Mounting Procedures).
3. Turn ON the X2L.
4. While aiming the weapon through the iron sights, use the provided adjuster tool (hex wrench) to adjust the visible aim point of the X2L by turning the adjusters, as needed, to superimpose the beam's aiming point over the weapon's iron sight aim point. Refer to the figure on the next page.
5. Aim and fire a three round shot group into the center of the target aiming point at 25 meters.
6. Compare the impact point of the shot group to where the beam's aiming point was on the target to ensure proper alignment.
7. Make the necessary adjustments to the beam to ensure the aiming point and the shot group are properly aligned.
8. Turn the unit OFF.

ZEROING PROCEDURES



WARNINGS

Before handling any firearm with the X2L read and understand the entire contents of your firearm manual and the X2L manual, especially the safety precautions and procedures for safe firearms handling.

Always check to see the chamber of the weapon is empty or "clear" before attempting to mount or dismount the X2L. Follow the "clearing" procedures as set forth in the manual for your firearm.

Be sure of your target and background before firing. When you squeeze the trigger, you must expect the pistol to fire and you must take full responsibility for firing it.

FOCUSING



To focus the beam of the X2L, simply turn the bezel until the desired focus is reached. Be careful not to unscrew the bezel from the body.

CAUTION

DO NOT place your hand in front of the muzzle of the firearm when turning the bezel.

BULB REPLACEMENT

1. Dismount the X2L from the firearm and turn the unit to the OFF position.
2. Turn the bezel counter-clockwise until it can be removed from the main body. There is a slight spring pressure as the bezel comes free of the retaining threads.
3. Remove the old bulb from the X2L as shown.
4. Insert the new bulb into the bulb cavity.
5. Reinstall the bezel by rotating clockwise, taking care to align the recoil spring in the counter-bore of the reflector, and be sure the o-ring is not pinched.



NOTE

Be sure to fully engage bezel on X2L main body so it does not come loose during firing.

CAUTION

Only replace the bulb when the X2L is detached from the firearm.

MAINTENANCE

The Manufacturer recommends removing the X2L from the firearm before any maintenance is performed.

General Cleaning:

1. Clean the X2L by rinsing with clean water or with a mild soap and water, then wipe dry with a soft cloth. Standard gun cleaning solvents (i.e., Hoppes®) may be used to clean stubborn areas. Rinse with clean water to eliminate residue. Cleaning should be done whenever the X2L becomes dirty or after exposure to salt water.
2. To clean the illumination window, wipe using a soft cloth with clean water, alcohol, or general purpose window cleaner. NOTE: Before shooting, to avoid a buildup of muzzle blast on the flashlight bezel lens, rub a small amount of oil or lubricating solvent on the exterior glass ONLY. This will make post-shooting cleanup easier.
3. Clean the electrical contacts with Q-Tips® dipped in alcohol, or for heavier buildup use a standard pencil eraser.
4. Replacement bulbs, part number CFL-010, can be purchased through the dealer where you purchased your light or you can contact Insight Technology directly to locate a stocking distributor.

LIMITED WARRANTY

INSIGHT TECHNOLOGY INCORPORATED

12 MONTH LIMITED WARRANTY

Insight Technology Incorporated warrants for 12 months after purchase that its products will be free from defects in material and workmanship. At its sole discretion, Insight Technology Incorporated will repair or replace, at no charge, any product or part (with the exception of the lamp and battery) which is found to be defective under normal use and service. Insight Technology Incorporated's obligation to either repair or replace shall be the purchaser's sole and exclusive remedy under this warranty. The warranty does not cover battery leakage. The battery manufacturer should be contacted in the event of a leak.

This warranty extends only to the original owner. There are no warranties, expressed or implied, other than as set forth on this page, and Insight Technology Incorporated disclaims any warranties of merchantability or fitness for a particular purpose. Insight Technology Incorporated shall not be liable for incidental, consequential or special damages arising out of or in connection with product use or performance. For service, repair, or replacement, return unit "UPS Prepaid" with a copy of the sales receipt to Insight Technology Incorporated.



For service, repair, or replacement, please call for a Return Material Authorization (RMA) number before returning unit. Send via "UPS Prepaid" with a copy of the sales receipt and the RMA number clearly marked on the package to:

9 Akira Way, Londonderry NH 03053

Attn: Commercial Sales

Ph: 877.744.4802 Fax: 603.647.7234

www.insightlights.com

The exportation of this product falls under the jurisdiction of the U.S. Commerce Department Bureau of Industry and Security and is subject to the Export Administration Regulations.

