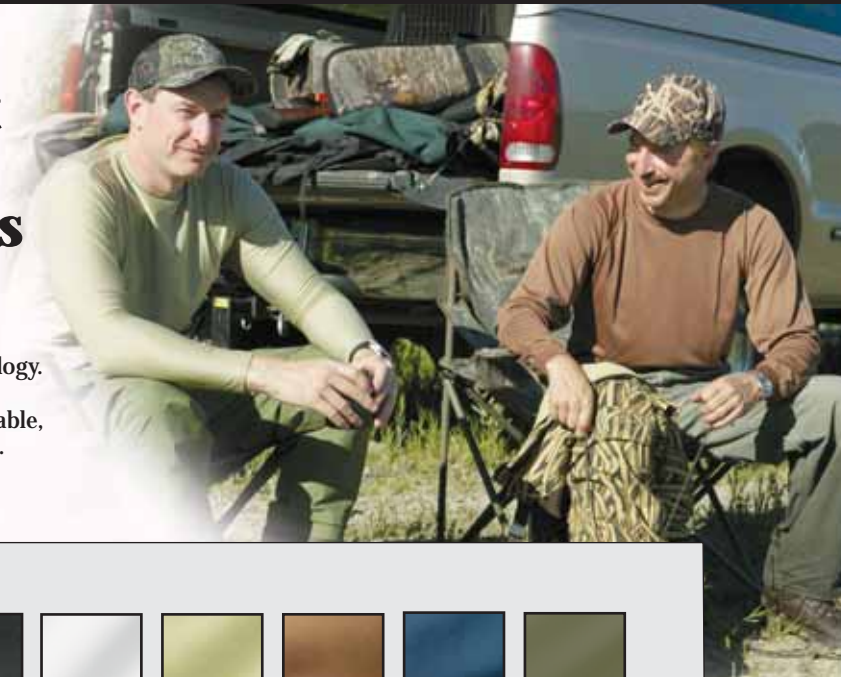


# Focus, Control, Comfort Your body demands it... Blackwater Gear delivers

## Microfiber Technology and Performance

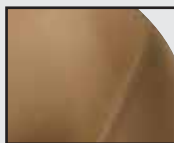
Blackwater Gear Apparel incorporates the latest microfiber technology. Microfiber polyesters are finer than a strand of natural silk. Knitted together, these microdenier fibers join tightly to form a strong, durable, luxurious, soft fabric with superior thermal regulated performance.



Important details like these make Blackwater Gear Apparel a great value



Flat lock stitching assures durability and exacting fit specifications, and comfort from chafing



Set-in sleeves allows for optimum mobility



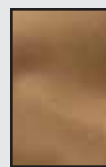
Black



White



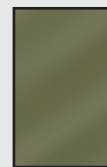
Fatigue



Brown



Navy



OD Green



### Tight Fit Compression Shirts

- Short Sleeve Compression T-shirt
- Set-in sleeves allows unrestricted movement.
- Qwik-Dri® Technology.
- 85% Nylon/15% Spandex.

#### Short Sleeve

	Black	White	Fatigue	Brown
Medium	#01180	#01190	#01200	#01210
Large	#01181	#01191	#01201	#01211
X Large	#01182	#01192	#01202	#01212
XX Large	#01183	#01193	#01203	#01213

#### Long Sleeve

	Black	White	Fatigue	Brown
Medium	#01220	#01230	#01240	#01250
Large	#01221	#01231	#01241	#01251
X Large	#01222	#01232	#01242	#01252
XX Large	#01223	#01233	#01243	#01253

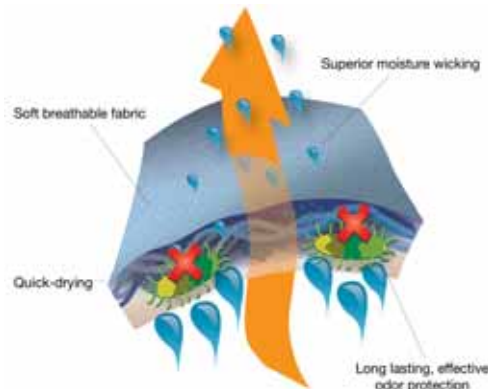


### Long Sleeve Mock Turtleneck

	Black	White	Navy
Medium	#01260	#01270	#01280
Large	#01261	#01271	#01281
X Large	#01262	#01272	#01282
XX Large	#01263	#01273	#01283

## Blackwater Gear Apparel wins against odors and stains

Silk weight and tight fit Blackwater Gear Apparel includes Visa Endurance® technology—an odor eliminating, moisture management and soil releasing system that lasts the lifetime of the garment. You can wear our silk weight apparel for days, under the most rigorous conditions and the garment still won't retain body odors, stains or moisture.





## Silk Weight Loose Fit Clothing

### Micro fiber technology and odor control

Visa Endurance technology relies on a patented silver ion release system to create fabrics that are residually protected against microbial contamination. Fabrics with a silver-based process have been proven to control bacteria growths that cause human body odors.

### Silk Weight T-shirts

- Drop tail helps shirt stay tucked in.
- Double needle stitching at armholes for extra durability.
- 100% Microfiber Polyester with Visa Endurance odor and stain resistance.



### Short Sleeve

	Black	White	Fatigue	Brown	Navy	O.D. Green
Medium	#01050	#01060	#01070	#01080	#01085	#01065
Large	#01051	#01061	#01071	#01081	#01086	#01066
X Large	#01052	#01062	#01072	#01082	#01087	#01067
XX Large	#01053	#01063	#01073	#01083	#01088	#01068

Blackwater Gear Tight Fit and Silk Weight apparel with Visa Endurance odor guard allows you to wear your undergarments for days on end without odor problems!

### Mock Turtleneck Long Sleeve

	Black	White	Navy
Medium	#01130	#01140	#01150
Large	#01131	#01141	#01151
X Large	#01132	#01142	#01152
XX Large	#01133	#01143	#01153

### Long Sleeve

	Black	White	Fatigue	Brown	Navy	O.D. Green
Medium	#01090	#01100	#01110	#01120	#01125	#01105
Large	#01091	#01101	#01111	#01121	#01126	#01106
X Large	#01092	#01102	#01112	#01122	#01127	#01107
XX Large	#01093	#01103	#01113	#01123	#01128	#01108

## Never be left out in the cold again

### Cold Gear

If your journeys take you to the iciest regions of the world, or if you live in a concrete jungle where freezing winds whip through city streets, you'll want Cold Gear by Blackwater Gear Apparel. Amazingly, you'll stay warm and comfortable without the bulky fabrics. Smart fabric used in our Cold Gear allows moisture to evaporate from your body before it chills you. Superior thermal insulating factors within the fabric work with your body to regulate your core temperature, balancing it based on your exertion level. Blackwater Gear Apparel Cold Gear can work alone or be layered for additional insulation.

Our Cold Gear keeps you warmer with smart fabrics Promotion Fabric

**promotion**

Wicks perspiration  
Compression for muscle support  
Power Stretch  
skin

### Long Sleeve T-shirt

- Keeps you warm in the coldest temperatures.
- Set-in sleeves allows unrestricted movement.
- Ribbed neck and cuff trim.



	Black	White	Fatigue	Brown
Medium	#01370	#01380	#01390	#01400
Large	#01371	#01381	#01391	#01401
X Large	#01372	#01382	#01392	#01402
XX Large	#01373	#01383	#01393	#01403



### Pants

- Stay warm in the coldest temperatures.
- Drawstring waist.
- Ribbed leg cuffs keeps heat in.

	Black	Fatigue
Medium	#01350	#01360
Large	#01351	#01361
X Large	#01352	#01362
XX Large	#01353	#01363

### Balaclava

- Sweat and moisture is wicked away from your face, allowing complete comfort.
- Separate eye and nose panel assures easy adjustments.
- 85% Nylon/15% Spandex.
- One size fits all.

Black #01000



### Lycra® 4-way stretch briefs and boxers

- Fly front.
- Qwik-Dri® technology.
- Exposed plush elastic waistband.
- 92% polyester/ 8% Lycra.
- Single pack.

Blackwater Gear Apparel keeps you comfortable in even the most extreme conditions. Cold, hot or humid, Blackwater Gear has the perfect undergarments for your situation.

### Briefs

	Black	White
Medium	#01310	#01320
Large	#01311	#01321
X Large	#01312	#01322
XX Large	#01313	#01323



### Boxers

	Black	White
Medium	#01330	#01340
Large	#01331	#01341
X-Large	#01332	#01342
XX Large	#01333	#01343





## Lightweight, durable utility knife

### BWGF5 Folding Knife

#### Blade:

- An exclusive design for Blackwater Gear by Benchmade®, based on the popular 550 folding modified Drop Point Knife.
- Combination edge—serration with plain—allows cutting through rope, webbing and wood.
- Ergonomically correct chamfered edge on oval thumbhole aids in opening.
- Silky smooth AXIS™ opening action can be customized for lighter or heavier opening.
- Black blade is easily concealed and offers excellent protection against corrosion.
- 154CM stainless steel, hardened to 58-60HRC.

#### Handle:

- Aggressive design gives user an enhanced grip.
- Reversible steel carry clip.
- Noryl GTX handle creates easy-to-hold all-weather grip.

Black #04140



Carry Clip allows easy access for pocket carry



Chamfered thumbhole makes the BWGF5 easy to open and close

#### Dimensions:

##### Blade

Length: 3.45" (8.76cm)  
Thickness: .115" (2.92mm)  
Open: 8.07" (20.50cm)  
Closed: 4.62" (11.73cm)

##### Handle

Thickness: 0.64" (1.63cm)

## Smooth, strong, safe and fast-opening

### BWGA7 Auto AXIS Knife

#### Blade:

- An exclusive design for Blackwater Gear by Benchmade.
- Features a single-hand, ambidextrous, auto-open function using a combination of Benchmade's automatic and patented AXIS™ mechanisms.
- Blade release is ambidextrous and easy to draw — AXIS thumb-button fires blade open.
- Tanto blade offers combo edge.
- Blade Material: Premium grade, stainless steel 154CM blade with a proprietary polymer blade coating, offering excellent corrosion resistance.
- Exceeds ASTM-117 specification for saltwater corrosion resistance.

#### Handle:

- Hard anodized 6061-T6 aluminum handle scales ensure a secure grip.
- Reversible steel carry clip allows for left or right hand carry.
- Simple, integrated safety is easily actuated to lock the blade open or closed.

Black #04160

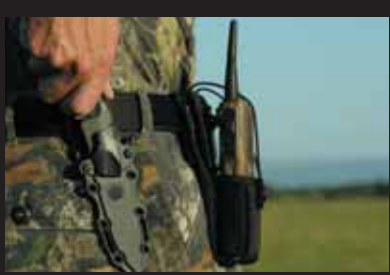
Dimensions: Blade  
Length: 3.4" (8.63cm)  
Thickness: .115" (2.92mm)  
Open: 8.25" (20.95cm)  
Closed: 4.90" (12.44cm)  
Weight: 5.2 oz. (147g)  
Handle  
Thickness: 0.48" (1.22cm)

The AXIS thumb button fires the blade open on the BWGA7 Auto AXIS Knife.



NOTE: Know your laws. This knife may not be legal in all jurisdictions.





## These knives are made for the military, but they're great companions for any adventure



Drop Point Blade

Tanto Blade

**Dimensions: Blade**  
 Length: 4.5" (11.43cm)  
 Thickness: .115" (2.92mm)  
 Overall: 9.45" (24.00cm)  
 Weight: 6.20 oz. (175g)  
**Handle**  
 Thickness: 0.5" (1.48cm)  
**Sheath**  
 Weight: 3.44 oz. (97g)

### Fixed Blade Knives

#### Blade:

- Tanto Blade offers excellent piercing strength in blade tip.
- Drop Point Blade is a solid utility knife that works in most applications.
- Sawtooth serration on blade spine offers a secondary cutting surface that is effective on rope, webbing or can saw through wood.
- Deep, flat bevel grind gives a razor thin edge.

- Blade material: 154CM stainless steel hardened to 58-60HRC.
- BT2® Black Blade absorbs light, allowing easy concealment and impeding blade corrosion.

#### Tang:

- Solid, full-tang foundation.
- Protruding tang with lanyard hole provides a window-breaking edge sturdy enough to pound a nail.
- G10 scales machined on wrap handle provide a firm grip.

#### Sheath:

- Strong and durable—Constructed from molded Kydex®/Thermoplastic.
- Keeps knife and user safe—Primarily designed for inverted carrying so knife won't fall out.
- Lockable—Two detents keep knife secure.
- Easy carry—Can be mounted for high or low carry. Holes allow for lashing to leg or arm for customized carry. Fits up to 2" belt.



Knife sheath carries knife vertically or can pivot for comfort and mobility.

	Tanto Blade	Drop Point
Coyote	#04100	#04120
Black	#04110	#04130

## Extraordinarily strong and sturdy

### BWGF7 Folding Knife

#### Blade:

- An exclusive design for Blackwater Gear by Benchmade, based on the 710 AXIS™ Folding Knife.
- Modified spear blade is perfect for a multitude of utility operations.
- Black coating includes a corrosion inhibitor, making blade impervious to the elements and excellent for concealment.
- Combination edge—serration with plain.
- AXIS mechanism can be used ambidextrously and can withstand 800 lbs. of force without compromising or jamming.
- High-end 154CM stainless steel, hardened to 58-60HRC.

#### Handle:

- G10 scaled handle is aggressively designed for optimum gripping.
- Thumb ramp and thumb purchase offer excellent gripping traction — will bite into gloves for additional gripping power.
- Visible 410 stainless steel liners assure blade rigidity.

Black #04150





**Dimensions:**

<b>Blade</b>	<b>Handle</b>
Length: 3.90" (9.90cm)	Thickness: 0.48" (1.22cm)
Thickness: .115" (2.92mm)	
Open: 8.80" (22.34cm)	
Closed: 4.90" (12.44cm)	Weight: 4.50 oz. (128g)

