

Installation illustrated of a brand new unformatted hard drive into an external 2.5/3.5 enclosure.

Thank you for choosing our external enclosure products. We feel that some of you may feel this illustrated installation helpful. (Based on PC with Windows 2000 Professional)

Please note you PC will not recognize your brand new unformatted hard drive after installation.

1. After installing your hard drive into the enclosure, switch on the power. Then connect the USB cable to the enclosure and then plug into the USB port of your computer. Then the following appears:



If you click the green arrow Icon in the system tray in the bottom right corner, you will see this window:

Unplug or Eject Hardware [?] [X]

 Select the device you want to unplug or eject, and then click Stop. When Windows notifies you that it is safe to do so unplug the device from your computer.

Hardware devices:

 USB Mass Storage Device

USB Mass Storage Device at USB Mass Storage Device

Display device components

Show Unplug/Eject icon on the taskbar

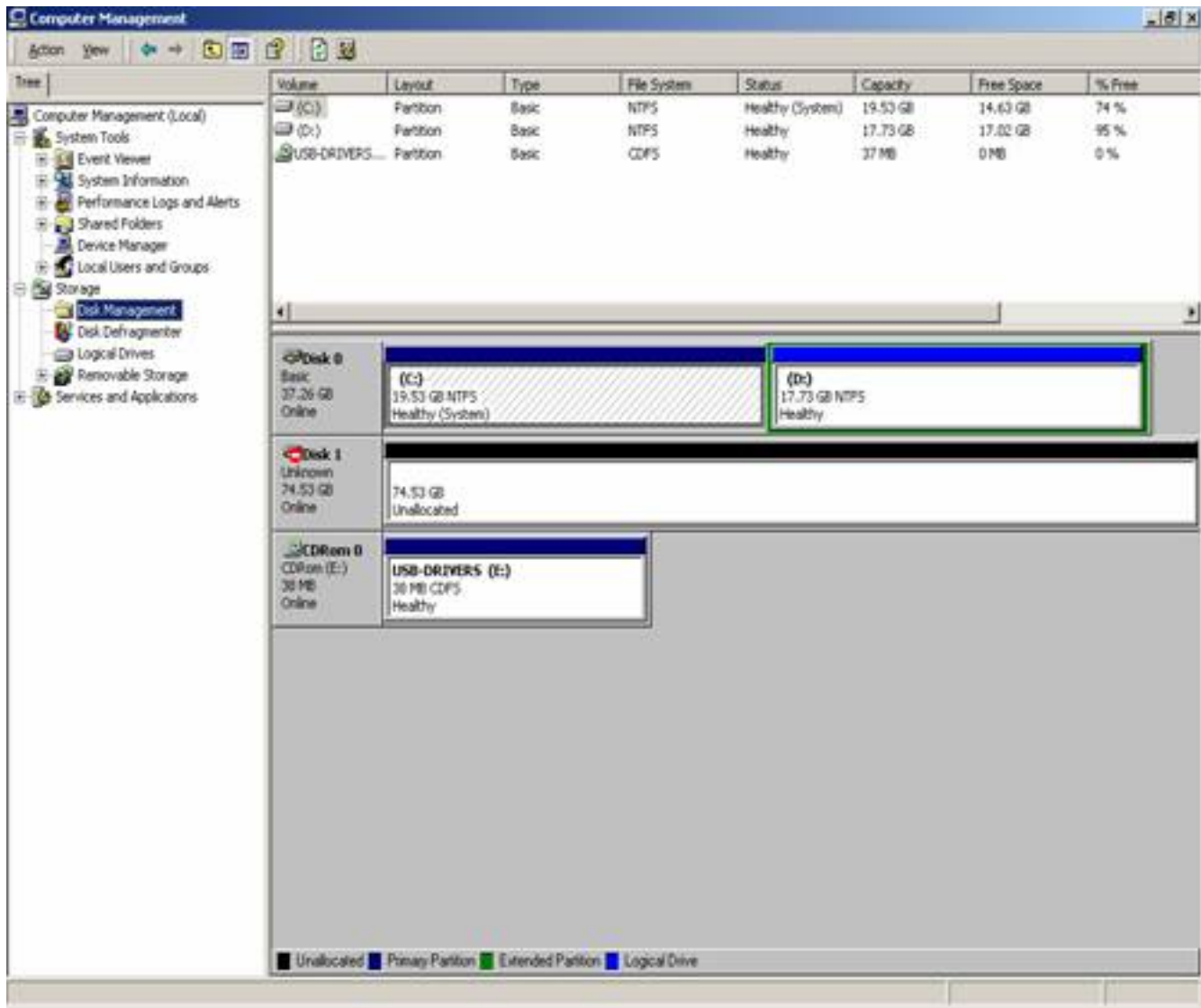


The above windows show that your PC found this USB 2.0 device and installed the driver for it automatically. The communication has been established.

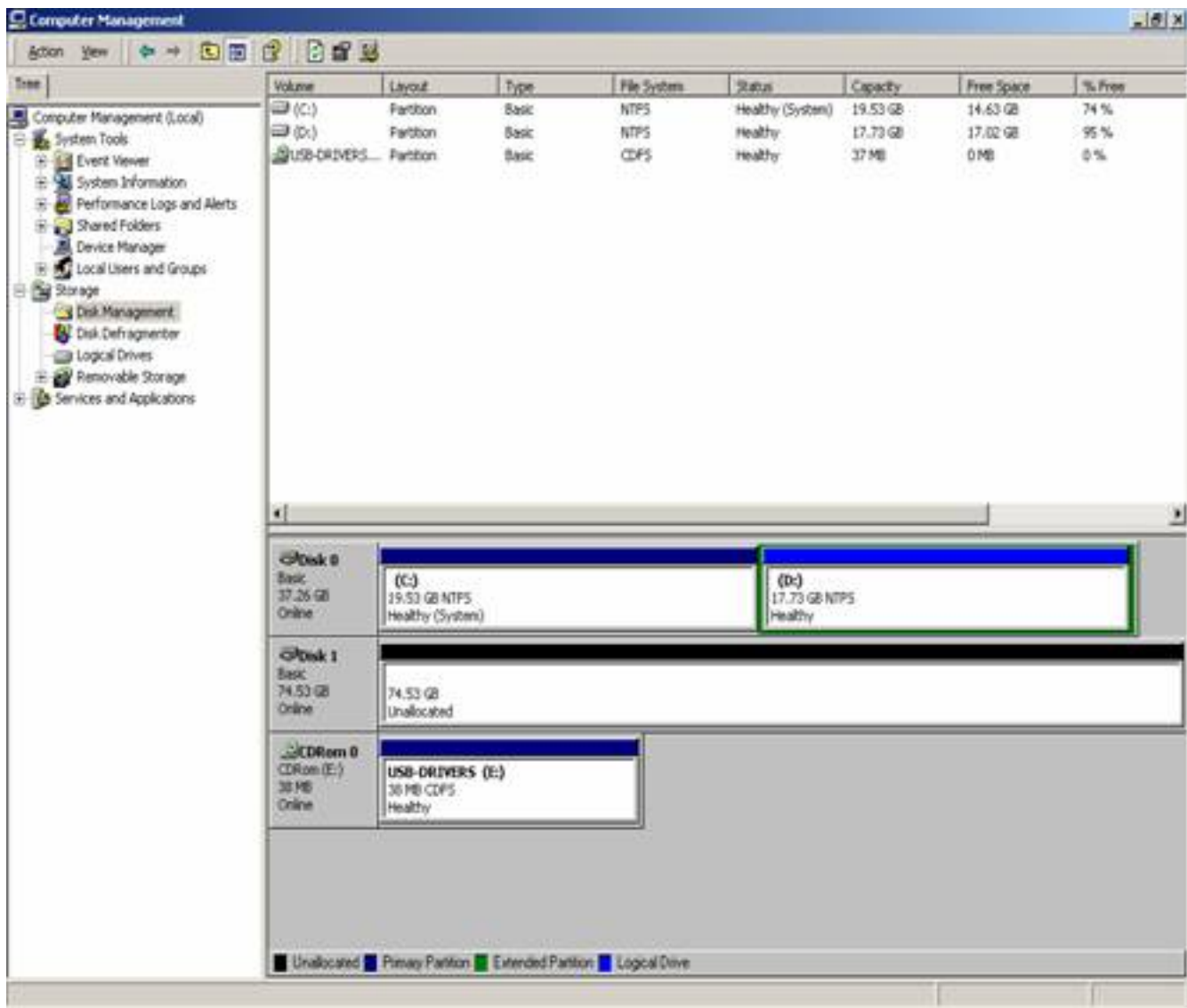
Please Note that you need to make sure your USB port is a USB2.0 port, otherwise, you can only get the transfer rate up to 12 Mbps, Which is USB1.1.

And even yours is a USB 2.0 port, some windows XP PCs still need to update the USB driver in order to support USB 2.0 plug-in devices. You will see a pop out note when you plug in the external USB 2.0 devices.

If your PC found this USB 2.0 device but has some error installing the USB



and



The disk 1 is the new hard drive. It shows 74.53 GB for 80 GB Hard disk.



Welcome to the Create Partition Wizard

This wizard helps you create a partition on a basic disk.

A basic disk is a physical disk that contains primary partitions, extended partitions, and logical drives. A basic disk may also contain volumes created with Windows NT 4.0 and earlier. You can also use MS-DOS to gain access to partitions on basic disks.

To continue, click Next.

< Back

Next >

Cancel

Create Partition Wizard



Select Partition Type

You can specify what type of partition to create.



Select the type of partition you want to create:

- Primary partition
- Extended partition
- Logical drive

Description

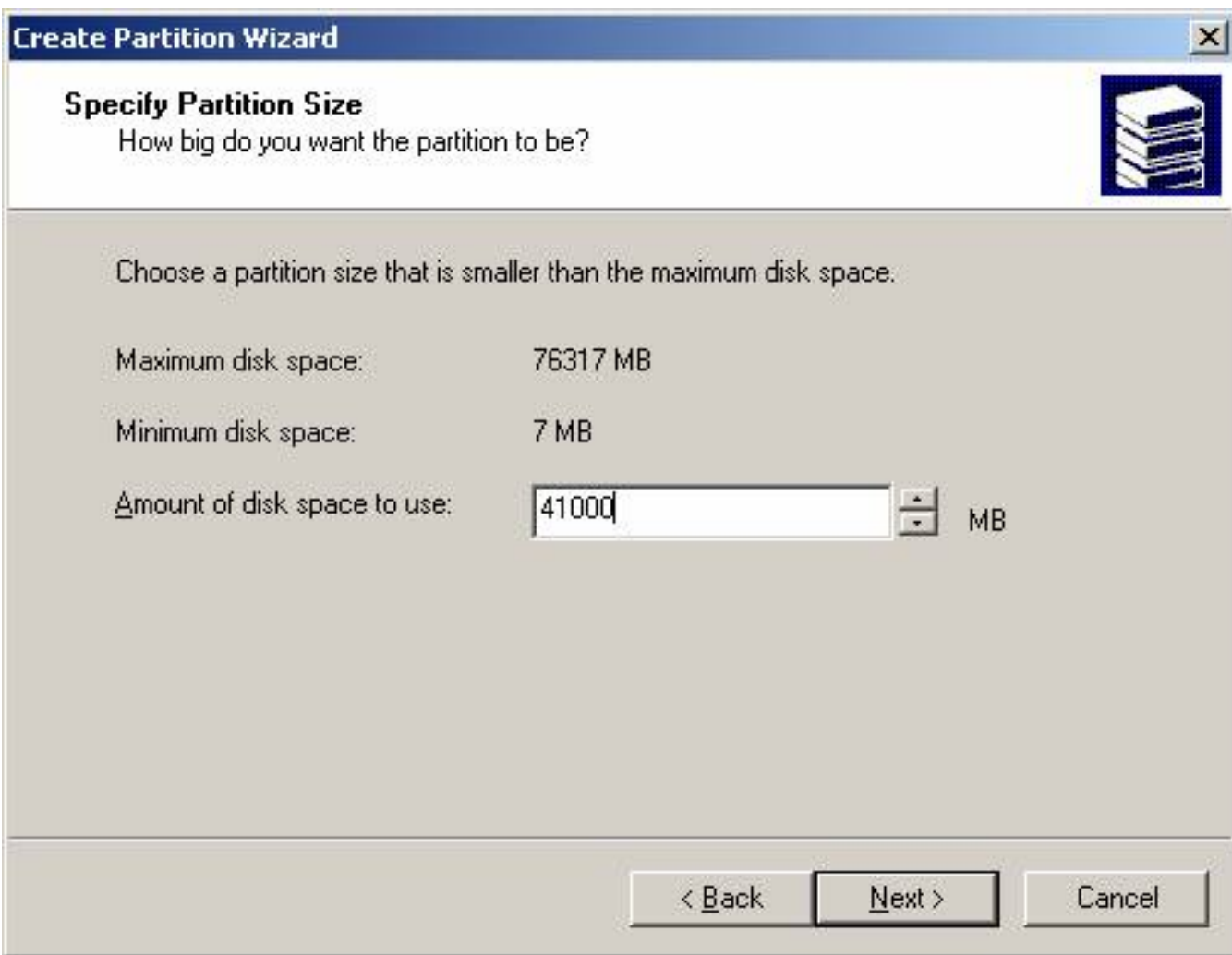
A primary partition is a volume you create using free space on a basic disk. Windows 2000 and other operating systems can start from a primary partition. You can create up to four primary partitions on a basic disk, or you can make three primary partitions and an extended partition.

< Back

Next >

Cancel

Click Next



Input the size of the disk space. Example if you want to divide the whole drive into two partitions. The first is about 40GB. Then input 41000. Otherwise, just click Next button and it will be 76317 MB as show above.

Click Next. PC automatically chooses F. You can choose any Drive letter.

Create Partition Wizard



Assign Drive Letter or Path

You can assign a drive letter or drive path to a partition.



Assign a drive letter:

Mount this volume at an empty folder that supports drive paths:

Browse...

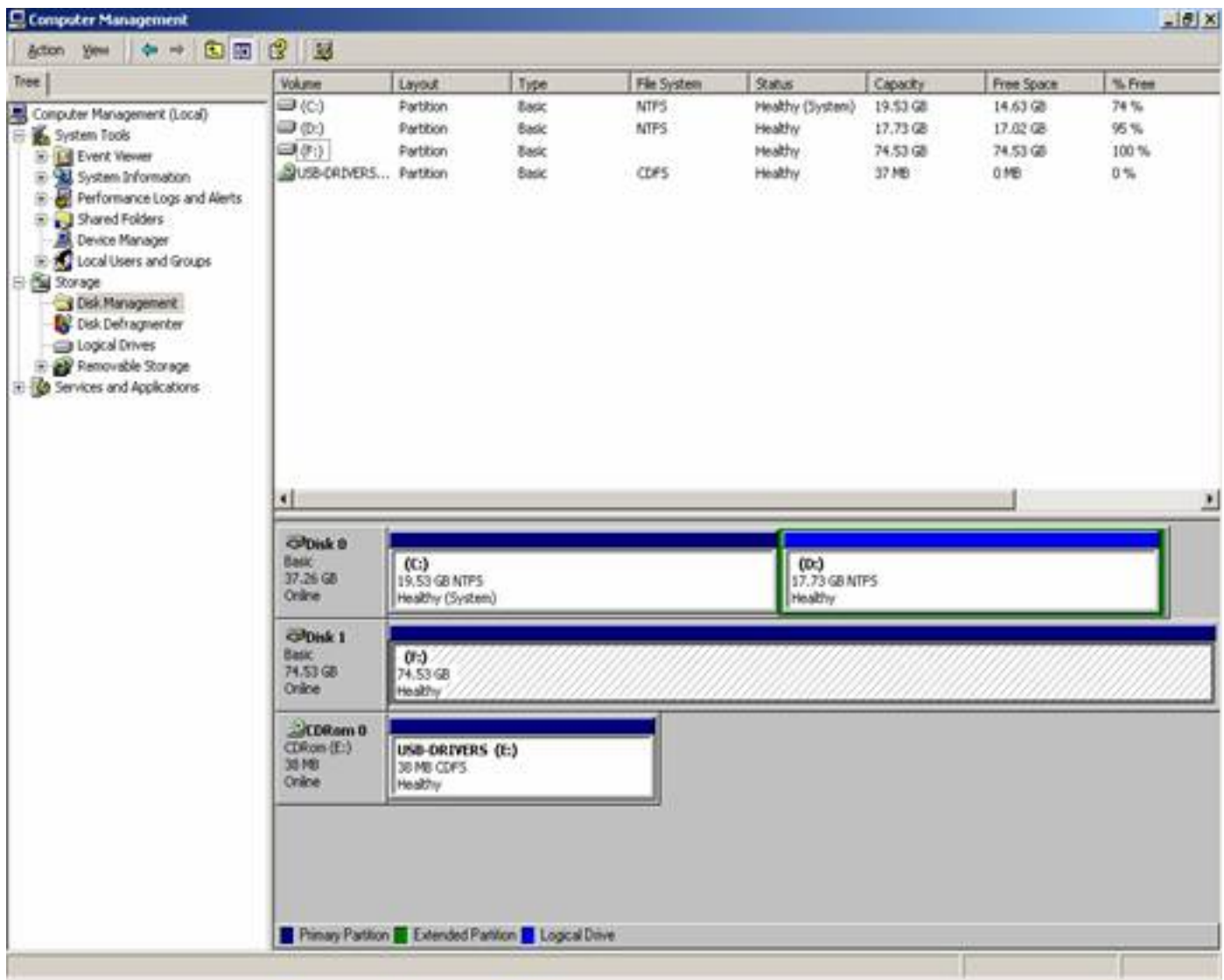
Do not assign a drive letter or drive path

< Back

Next >

Cancel

Click Next



Close this window and Congratulations! You are ready to use this device now.