

“Single Point”

**ELECTRIC INSTANTANEOUS WATER HEATER
INSTALLATION GUIDE AND OWNERS MANUAL**

WARNING

**BEFORE ATTEMPTING INSTALLATION OF THIS UNIT OR MAKING ANY
ADJUSTMENTS TO THE UNIT, BE SURE CIRCUIT BREAKER IS OFF
TO PREVENT DANGER OF SERIOUS ELECTRIC SHOCK.
FAILURE TO GROUND THE SYSTEM MAY RESULT IN SERIOUS INJURY OR DEATH**

INSTALLER/ CONSUMER RESPONSIBILITIES

READ THIS MANUAL CAREFULLY BEFORE ATTEMPTING TO INSTALL OR
OPERATE THIS WATER HEATER. IF THE SAFETY RULES ARE NOT FOLLOWED,
THE UNIT WILL NOT OPERATE PROPERLY AND IT COULD CAUSE DEATH,
SERIOUS BODILY INJURY AND/OR PROPERTY DAMAGE.
WARRANTY OF THIS WATER HEATER WILL DEPEND
ON PROPER INSTALLATION AND OPERATION. THE WARRANTY
WILL BE VOID IF THE DESIGN HAS BEEN ALTERED IN ANY WAY
WHATSOEVER. THE MANUFACTURER OF THIS HEATER WILL NOT BE LIABLE
FOR ANY DAMAGES BECAUSE OF FAILURE TO COMPLY WITH THE INSTALLATION
AND OPERATING INSTRUCTIONS OUTLINED ON THE FOLLOWING PAGES.

THE INSTALLATION MUST CONFORM WITH THE INSTRUCTIONS IN THIS
MANUAL AND THE LOCAL CODES, OR IN THE ABSENCE
OF LOCAL CODES, WITH THE LATEST EDITION OF THE
NATIONAL ELECTRICAL CODE. THIS PUBLICATION IS AVAILABLE FROM
YOUR LOCAL GOVERNMENT, ELECTRIC CO., PUBLIC LIBRARY, OR BY
WRITING UNDERWRITERS LABORATORIES, 333 PFINGSTEN RD.,
NORTHBROOK, IL. 60062

IF YOU REQUIRE HELP OR HAVE ANY QUESTIONS RELATING TO THE
INSTALLATION OR PERFORMANCE OF THIS HEATER, PLEASE CALL
OUR TECHNICAL SERVICE DEPARTMENT TOLL FREE: 1-800-543-6163.
HAVE THE INFORMATION LISTED BELOW BEFORE CALLING:
MODEL NO. _____ SERIAL NO. _____ INSTALLATION DATE _____

**Eemax Inc., 353 Christian St., Oxford, CT 06478
203-267-7890 • email: eemaxinc@aol.com**

GENERAL

The Eemax "Single Point" heater is specifically designed to be installed "under sink" feeding a SINGLE faucet. It is designed to take in cold water ONLY and heat it to temperatures suitable for hand washing. To obtain optimum performance and energy savings, the unit should be located as near as possible to the point of use. The heater incorporates a constant flow device and should only be used with the faucet aerator supplied with this heater by Eemax. The unit is supplied with compression rings and nuts suitable for direct coupling to 3/8" copper or plastic piping. Do not use additional screwed fittings or pipe dope. Doing so will void the warranty. **DO NOT SOLDER PIPES WHILE THE UNIT IS INSTALLED** (serious damage to the electronic flow switch will result).

THIS HEATER MUST HAVE ITS OWN INDEPENDENT CIRCUIT, USING A CORRECTLY RATED CIRCUIT BREAKER AND WIRES SUITABLE FOR AT LEAST 75 °C OPERATION.

INSTALLING THE UNIT

1) The unit must be mounted underneath a sink in a VERTICAL position with the inlet and the outlet at the TOP. Mounting in any way other than this WILL cause element burn out and possibly damage the unit further.

Do not install the heater above the faucet as the siphoning effect will drain the heater which can cause element burn out and damage the unit.

2) The cold water **inlet is on the right hand side** and the **hot water outlet is on the left hand side**. Under **NO** circumstances can these be reversed.

3) Leave a **minimum of 8"** below the unit for easy replacement of the element.

4) The heater should be fixed to the wall using the four mounting holes at each corner of the backplate.

5) The unit is supplied with 3/8" compression fittings. USE THESE: DO NOT USE TAPERED THREADED PIPE FITTINGS, AND **DO NOT SOLDER TO THE INLET OR OUTLET. DO NOT USE TEFLON TAPE OR PIPE DOPE AS THIS IS LIKELY TO DAMAGE THE FLOW SWITCH AND WILL VOID THE WARRANTY.**

6) When all plumbing is complete, check the installation for leaks. Run water through the heater **for a few minutes** until the flow is continuous, free from gulping and any visible air pockets, before connecting the electrical supply.

WARNING

UNIT MUST BE PROPERLY GROUNDED TO THE "GND" LOCATION ON THE TERMINAL BLOCK. FAILURE TO GROUND THE SYSTEM MAY RESULT IN SERIOUS INJURY OR DEATH.

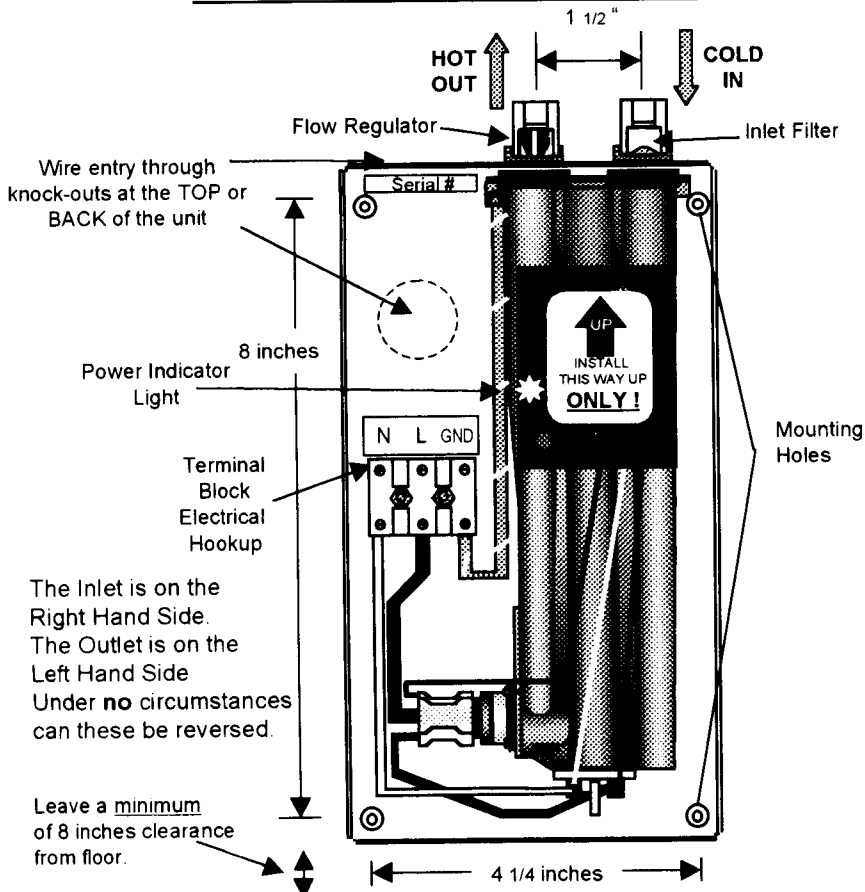
WARNING
BEFORE BEGINNING ANY WORK ON THE ELECTRICAL INSTALLATION BE SURE
THAT THE CIRCUIT BREAKER IS IN THE "OFF" POSITION TO AVOID ANY
DANGER OF ELECTRICAL SHOCK.

RATINGS OF "SINGLE POINT" MODELS

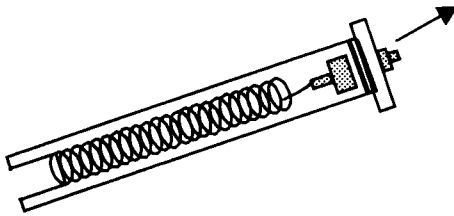
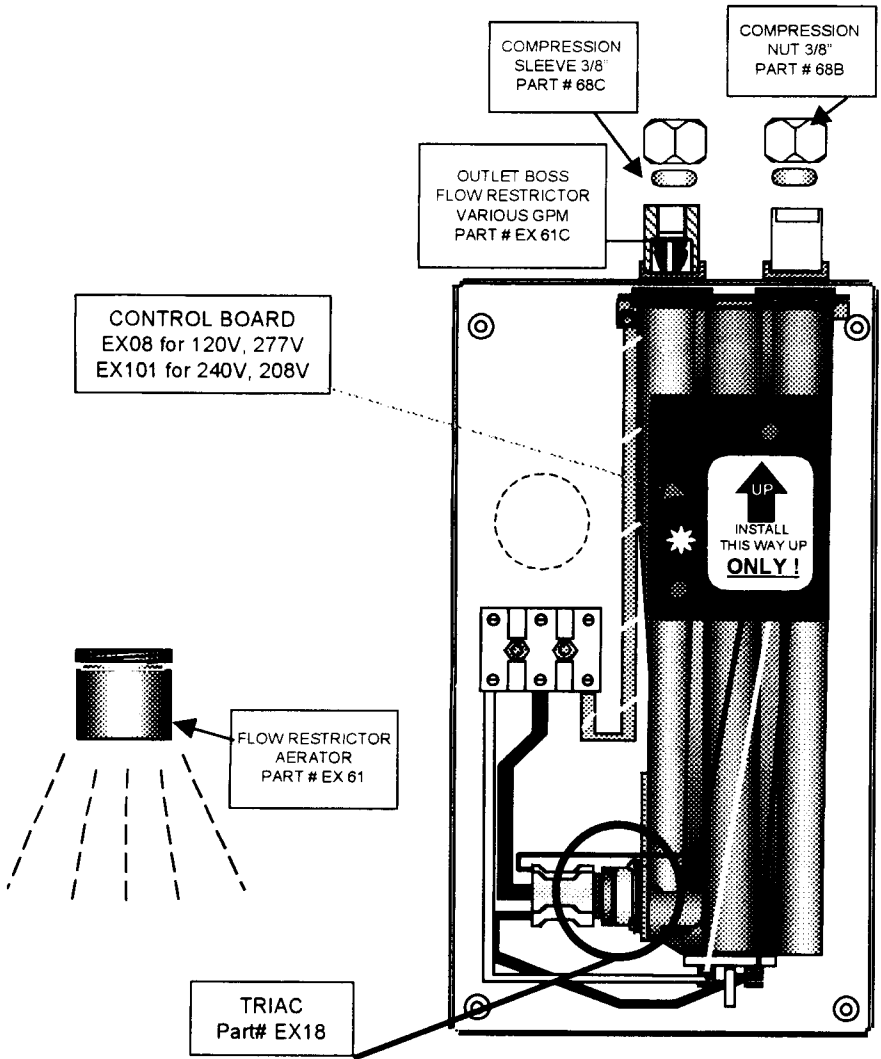
MODEL	VOLTS*	OUTPUT kW	CURRENT AMPS	TEMPERATURE RISE °F		
				0.5 gpm	0.6 gpm	0.7 gpm
SP2412	120	2.4	20	33	-	-
SP3012	120	3.0	25	41	34	29
SP3512	120	3.5	29.2	48	40	34
SP3208	208	3.0	14.4	41	34	29
SP4208	208	4.1	19.7	56	47	40
SP3277	277	3.0	10.8	41	34	29
SP4277	277	4.1	14.8	56	47	40
SP35	240	3.5	14.6	48	40	34
SP55	240	5.5	22.9	75	63	54

* Units must be installed at rated voltage ONLY

THIS HEATER MUST BE INSTALLED ONLY IN A VERTICAL POSITION
WITH THE INLET AND OUTLET AT THE TOP



REPLACEMENT PARTS FOR EEMAX "SINGLE POINT" MODELS



ELEMENT CARTRIDGE

HEATER MODEL/ORDER REF CARTRIDGE REF #

SP 2412	EX 610 SP
SP 3012	EX 480 SP
SP 3512	EX 410 SP
SP 3208	EX 1440 SP
SP 4208	EX 1050 SP
SP 35	EX 1650 SP
SP 55	EX 1050 SP
SP 3277	EX 2500 SP
SP 4277	EX 1870 SP