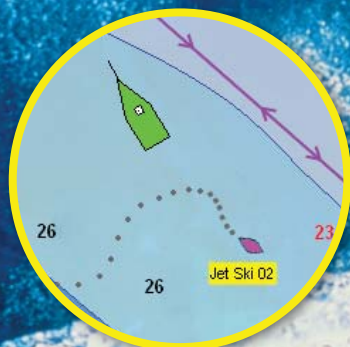


Protect What Matters Most With Tender Tracker™



Nobeltec® Tender Tracker Plus Pack

Keeping track of loved ones, key personnel, and on-water assets is always at the top of the list for large yacht owners. When jet skis can't be located or an expected call from a tender isn't received, visions of a breakdown, an empty fuel tank, and worst of all, an accident, come to mind. Anxiety can arise from the uncertainty of these potential situations.

Jeppesen Marine has teamed with Seetrac Tender Tracking to introduce the safest and best way to instantly know the location of jet skis, wave runners, wet bikes, and tenders. Very simply, the solution tracks the location of each tender and instantly reports it back to the mother yacht for immediate on-chart display inside Nobeltec Admiral software. When security and safety are at stake, Nobeltec and Seetrac Tender Tracking deliver peace of mind.

Nobeltec Product

Tender Tracker Plus Pack

For current pricing check www.nobeltec.com

Part #

RSRXX00001



Making Every Mission Possible™



**Instantaneous Position Reports
Displayed Over the Chart**

—

Secure Communication Channel

—

Personal Alarm On Each Tender

—

Up to 5NM Range

—

**Waterproof and
Shock-Resistant Technology**

—

**Reports Position, Depth, and
Wind from Tenders**

—

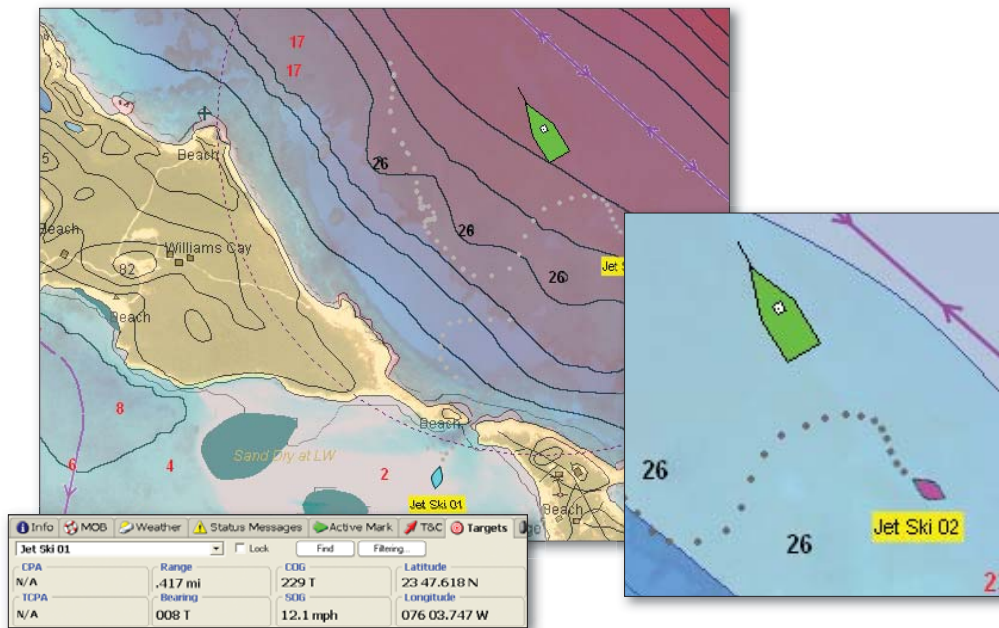
Set Alarm Boundaries

Tender Tracker Plus Pack



Specifications

Minimum System Requirements



- Windows 2000, Windows XP Home Edition/Professional (latest Service Pack may be required for Technical Support troubleshooting.)
- Pentium 4 equivalent or higher
- 512MB of memory
- 160MB hard drive plus additional space for charts
- 1024x768 resolution, 32-bit color video
- CD-ROM drive for vector charts, DVD for optional data
- Available serial port for GPS connection*
- Available USB or Parallel port

Recommended:

- Pentium 4, (3.0 GHz or equivalent) or better
- Memory: 1 GB (or more if multiple high end features are used concurrently)
- GlassBridge Network: 1 GB additional hard drive space
- Bathy Recorder: 2-4 GB additional hard drive space
- Multiple monitor support: dedicated video card(s) with 64MB Video RAM per monitor

* If you do not have an available serial port, a USB to serial adapter may be purchased separately, requiring only an available USB port

Hardware Solution

Utilizes resilient, waterproof and shock-resistant technology from SeeTrac Tracking Systems. Learn more about the hardware solution at www.seetrac.com

Track Multiple Tenders

The solution permits tracking of up to 99 discrete tenders.

Increased Safety and Security

With a long range (up to 5nm) and high transmitting frequency, the Tender Tracking solution ensures that tender whereabouts are always known. All data transmissions are encrypted for enhanced security. A manual operated alarm button on each tender can be activated, should help be required.

Set Boundary Alarms

Set an alarm with Nobeltec Admiral, indicating if a tender has left a boundary zone. This feature can be used not only to help keep an eye on youngsters who might wander off too far, but can also help protect against the threat of theft.

Sounding Check

Use a tender as a "pilot" vessel ahead of the mother yacht, for surveying an anchorage or narrow reef entrance. Depth data is instantly reported back to the mother ship, and bathymetric data can be instantly updated using the Nobeltec Bathy Recorder*.

* Sold separately.

Jeppesen Marine Plus Packs

Check Out All of the Jeppesen Marine Plus Packs Now Available for Admiral and VNS Version 9:

XM Plus Pack*

Jeppesen Marine's new weather options transform simple weather data so that you can make informed navigation decisions and extend your time on the water without compromising safety.

Sailing Plus Pack*

This comprehensive feature pack contains key cruising and performance tools for sailors, regardless of skill or experience level.

Bathy Recorder Plus Pack*

Bathy Recorder Plus Pack enables you to record sea floor topographic information using your depth sounder device and to incorporate that data into your 3D charts. Use custom sea floor charts which will constantly improve with repeat trips over the same routes, enabling you to have a perfect picture of your favorite fishing spots!

* XM and Sailing Plus Packs sold separately and require Admiral or VNS 9. Bathy Recorder Plus Pack requires Admiral or VNS version 8.1.2000 or higher.

Visit www.nobeltec.com for more information.

For more information visit your local authorized Nobeltec reseller or visit us on the web at www.nobeltec.com.



15160 NW Laidlaw Rd., Suite 100
Portland, Oregon 97229

Toll Free: 800-946-2877
Global: +1 503 579 1414

www.nobeltec.com

Jeppesen Marine is constantly enhancing product specifications and accessories. To find the most up-to-date information, please visit our website. Specifications subject to change without notice. Trademarks are property of their respective owners. ©2006 Jeppesen Marine, Inc. All rights reserved.

RLBXX00014 9/06