

Nobeltec

Admiral MAX Pro™

The Best of Both Worlds: Nobeltec Navigation Software & C-Map MAX Pro Cartography

Your yacht deserves nothing less than the most powerful electronic navigation solution available – Admiral MAX Pro. And now, our latest version works with the most respected electronic cartography on the market, C-Map MAX Pro™ charts. C-Map by Jeppesen™, the leader in digital mapping, delivers the most navigation data while maintaining the highest level of accuracy. In short, Jeppesen Marine presents the incomparable functionality of Admiral MAX Pro – along with the highest quality MAX Pro charts and additional data layers – to deliver a comprehensive, feature-rich navigation solution.

Admiral MAX Pro gives you all the features found in Visual Navigation Suite MAX Pro (VNS MAX Pro) including Microsoft® Vista support, improved depth contour and night mode display options, and a handy Undo feature. Augment your system with add-ons: Sailing Plus Pack with new Windvantage™ Weather Router, Weather Plus Pack (now works with both Sirius® and XM® data receivers), Bathy Recorder Plus Pack, Tender Tracker Plus Pack, and Raster Plus Pack.* Additional Admiral MAX Pro features include four fully-customizable NavInfo panels for immediate display and histogram representation of key navigation data, a hand panning tool, GPS signal strength, trip odometer display, advanced multi-monitor support, GlassBridge™ Network, data sharing, track line coloring, dual radar support, vessel scaling, AIS filtering, and the easy-to-use NavView touch-screen, with a big-button user interface.



* Sailing Plus Pack, Weather Plus Pack, Tender Tracker Plus Pack, and Raster Plus Pack sold separately and require Admiral or VNS version 9 or MAX Pro versions. Bathy Recorder Plus Pack requires Admiral or VNS version v8.1.1064 or higher.

Jeppesen is a Boeing Company

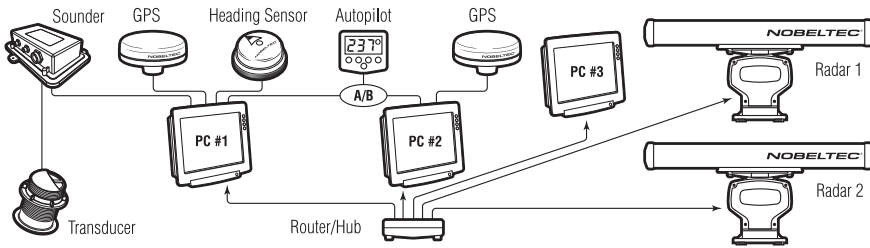


- ~ Supports C-MAP MAX Pro Cartography
- ~ Optional Plus Pack Upgrades
- ~ Multi-Monitor Support
- ~ GlassBridge™ Network/Data Sharing
- ~ Enhanced Target Tracking (ARPA/MARPA, DSC, AIS, Tender)
- ~ Exclusive NavView Look and Feel
- ~ Support for Multiple Video/Camera Inputs
- ~ Single and Dual Radar Support
- ~ 3D View with Shaded Relief
- ~ Autopilot Ready
- ~ Tides and Currents Overlay
- ~ Sirius® Marine, XM® and GRIB Weather Support

 **JEPPESEN**
Marine

nobeltec.com

Admiral MAX Pro™



C-Map MAX Pro Charts

MAX Pro cartography, the latest evolution in charting technology by C-MAP by Jeppesen, is the advanced electronic charting standard designed for use on high performance PC-based navigation systems. With MAX Pro charts, you'll find vivid, crisp, colorful charts and display options.

You will always know that you have the latest, most complete chart data available with Quick-Sync Updates. Your purchase of MAX Pro charts allows you to download all recent Notice to Mariner (NTM) advisories. Additionally, you are entitled to receive all MAX Pro database revisions that Jeppesen Marine publishes for one year after purchase.

Multi-Monitor Support

Use a single computer to display Admiral MAX Pro on multiple monitors. Use the View Manager to easily configure each display, making it easy to know exactly what's going on around your vessel. Configure each screen to your exact specifications for a larger viewing area. For example, with one PC and three monitors, you can display a traditional electronic chart on one screen, a 3D view on a second, and radar or sounder on a third.

NavInfo Panel & Strip Charts

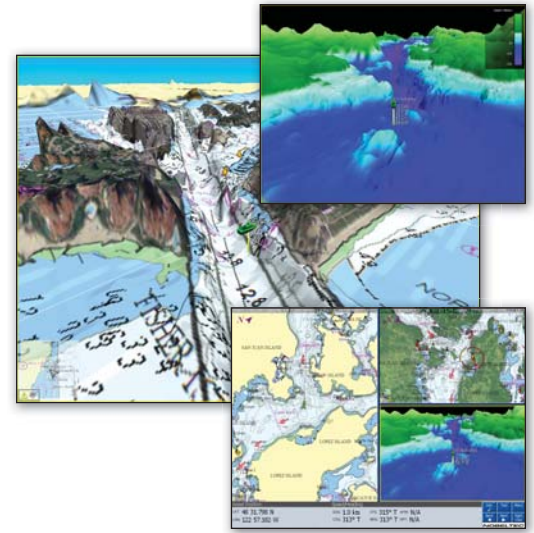
Configure and customize the display of over 50 different data types for meaningful on-screen representation. Simply double-click a value to switch to Strip Chart (histogram) display and easily measure averages over time! Admiral MAX Pro includes four customizable NavInfo panels.

Powerful Place & Name Search

Quickly locate points of interest, chart text and more, using an efficient search engine that intelligently finds matches to the text you provide.

Voyage Planning at Home or Office

You may use Admiral MAX Pro to plan your voyage before you board your vessel. Run the planning portions of the Admiral MAX Pro system on your home or office computer and then transfer your route to your navigation system.



Supported Chart Formats

- Max Pro
- BSB, Maptech™ Photos (requires Raster Plus Pack)

GPS Upload/Download*

- All units that support NMEA 0183
- Eagle/Lowrance®
- Furuno®
- Garmin®
- Magellan®
- Navman®
- Northstar®
- Raymarine®
- Standard Horizon®
- Trimble® NT Series

Minimum System Requirements†

- Windows® XP Home/Professional or Vista™ **
- CPU: 1 GHz (Dual Core/ Dual Processor is supported)
- Memory: 1 GB RAM
- Hard Drive Space: 500 MB for NNS programs, plus 20 GB for charts and supplemental data
- Display: 1024x768 resolution, 32-bit color video
- Video Card: 64 MB RAM
- DVD Drive
- Serial or USB ports for GPS, radar, etc.
- USB port: At least one USB port for Hardware Key
- Mouse or other pointing device

Recommended System Requirements†

- CPU: 2 GHz
- Memory: 2 GB RAM
- Video Card: 256 MB RAM & OpenGL for each monitor
- Internet access for registration and to purchase software add-ons and charts

Bathy Recorder Plus Pack

- 2-4 GB additional hard drive space

* Not all models from the companies indicated above support data transfers

† Higher system requirements may be appropriate if multiple advanced features are used concurrently.

** Latest Service Pack may be required for Technical Support troubleshooting. (GlassBridge™ Networking is only supported on Windows® XP Professional, Microsoft® Vista Business, Microsoft® Vista Ultimate, and Microsoft® Vista Enterprise.)

CONTACT US

Sales, Customer Service & Technical Support: For sales or product information, please contact us at:

North & South America

Support: (8am – 9pm ET)
Toll-Free: (800) 732-2800
Global: +1 303 328 6983
Email: marine.support@jeppesen.com
Sales: (11am – 8pm ET)
Toll-Free: (800) 946-2877
Fax: +1 503 579 5095
Email: sales@jeppesen.com

Europe, Middle East, Africa

Support: (8am – 5pm CET)
Global: +49 6102 50 8171
Email: marine.support@jeppesen.com
Sales: (8am – 5pm CET)
Tel: +44 1293 842674
Fax: +1 503 579 5095
Email: sales@jeppesen.com

Asia, Pacific, Australia

Support: (8am – 5:30 pm AET)
Global: +61 2 9808 6200
Email: cmapiinfo@c-map.com.au
Sales: (8:30am – 5:30pm AET)
Global: +61 2 9808 6200
Fax: +61 2 9808 6233
Email: sales@jeppesen.com

Visit Our Website: www.nobeltec.com

Jeppesen Marine is continuously enhancing product specifications and accessories. To find the most up-to-date information, please visit our website. Specifications subject to change without notice. Trademarks are property of their respective owners.
©2008 Jeppesen Marine, Inc. All rights reserved.