



Digest-All IC

and your body

Phase I: Ingestion

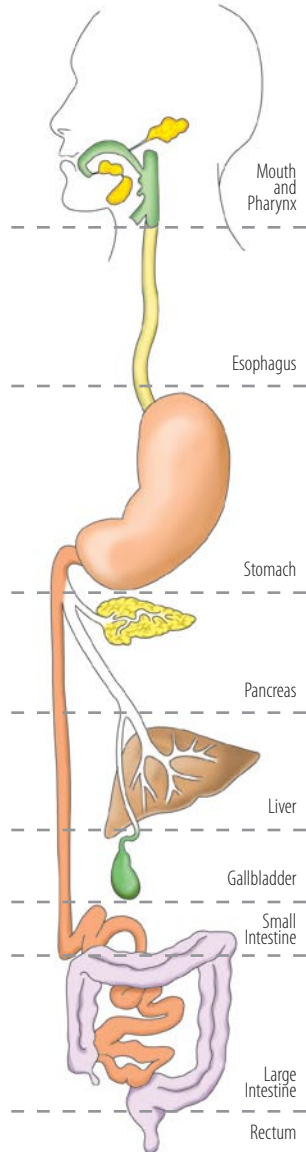
The mouth is responsible for many jobs, but the most important is the chewing and moistening of food, preparing it for transport and digestion. **Digest-All Intensive Care** is best swallowed whole as are most capsules and tablets. Once ingested the esophagus brings the tablet to the stomach where the patented tablet technology can enter into its second phase.

Phase II: Gastric Acid Bypass

The most important facet of **Digest-All Intensive Care** takes place in the harsh environment of the stomach. A very low pH created by strong hydrochloric acid liquefies proteins and carbohydrates as well as being very effective in killing bacteria. Since probiotics are live bacteria this low pH destroys most when they are ingested in the form of capsules, powders, or even food. In order to avoid this catastrophe, probiotics need to be protected during this stage of the digestive tract. That is just what the **patented delivery technology** in **Digest-All Intensive Care** achieves; the low pH triggers a response by the sophisticated tablet to create a layer of protection around the fragile probiotics and enzymes. **The tablet does not break down in the stomach as compared to inferior probiotic supplements, but gets passed onto the small intestines where it can begin its digestive support.**

Phase III: Active Release

Now that the harsh stomach environment has been navigated, **Digest-All Intensive Care** reaches the small intestines. As it reaches the small intestines, contents from the stomach get bombarded with bicarbonate ions secreted from both the pancreas and gallbladder in order to increase the pH. The **patented tablet delivery technology** acts in response to this change in environment to release the contents of probiotics, digestive enzymes, and herbs. The assortments of **enzymes immediately go to work digesting starches, proteins, fats, lactose, and fiber.** Our herbal blend of Ginger, Peppermint, and Triphala can soothe, comfort and balance the digestion process. **Digest-All IC** contains a synergistic blend of beneficial microflora strains commonly found in a healthy human gut. **Our probiotics support healthy digestion and natural immune** function by replenishing **good** microflora populations (lost to antibiotic use), inhibiting **bad** microflora overgrowth, caused by disease, poor diets, stress, viral or fungal infections, or other digestive problems.**



For more information, please visit www.mrm-usa.com

Reference: Vander, Sherman, Luciano. (1990). Human Physiology: Mechanisms of Body Function. San Francisco: McGraw-Hill Publishing Company.

**This statement has not been evaluated by the Food and Drug Administration (FDA). This product is not intended to diagnose, treat, cure, or prevent any disease.