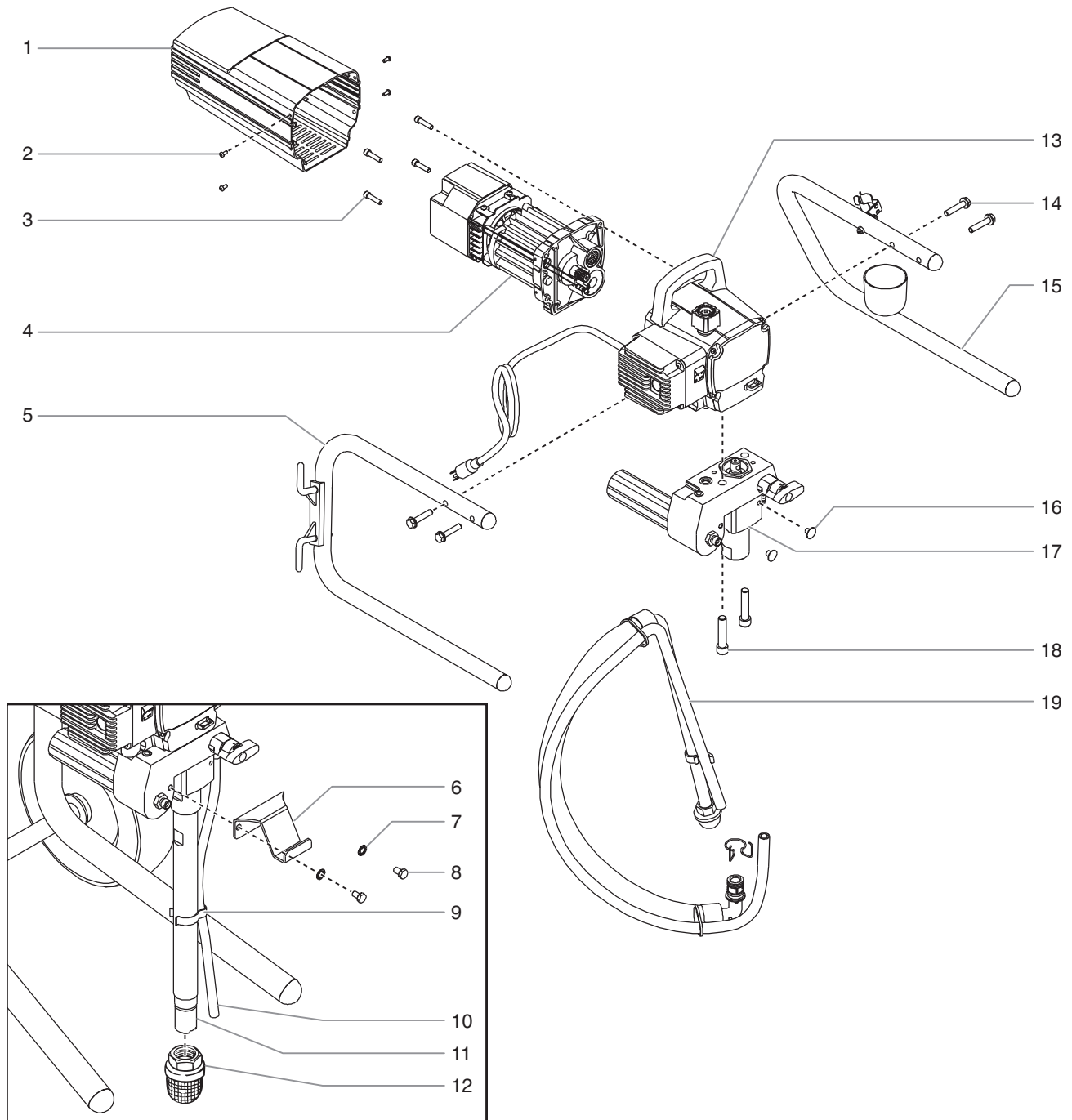


Part List

Main Assembly

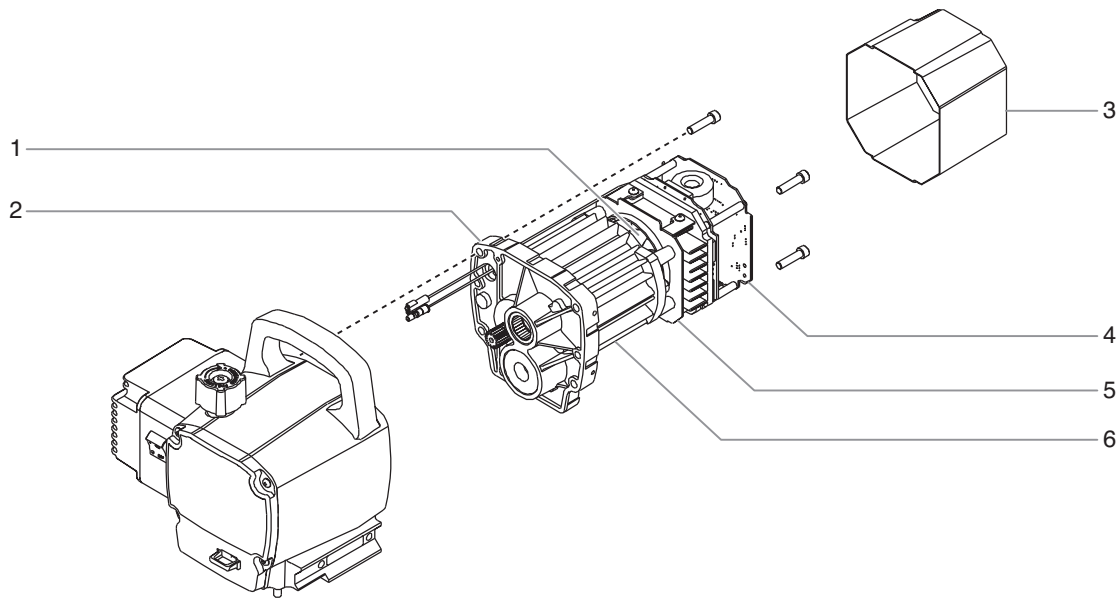


| Item | Part # | Description | Quantity |
|------|---------|---------------------------------------|----------|
| 1 | 0551517 | Motor cover..... | 1 |
| 2 | 0551440 | Screw..... | 4 |
| 3 | 9800308 | Screw..... | 4 |
| 4 | ----- | Motor assembly..... | 1 |
| 5 | 0551526 | Left leg assembly (tand only)..... | 1 |
| 6 | 0551443 | Pail hook (upright cart only)..... | 1 |
| 7 | 0508549 | Wafer (upright cart only)..... | 2 |
| 8 | 0508550 | Screw (upright cart only)..... | 2 |
| 9 | 0507783 | Ho e clip (upright cart only)..... | 1 |
| 10 | 0551556 | Return hose (upright cart only)..... | 1 |
| 11 | 0508552 | Siphon tube (upright cart only)..... | 1 |
| 12 | 5006536 | Inlet screen (upright cart only)..... | 1 |
| 13 | ----- | Gear box assembly..... | 1 |

| Item | Part # | Description | Quantity |
|------|---------|--|----------|
| 14 | 0509550 | Screw (tand)..... | 4 |
| | 0509244 | Screw (upright cart)..... | 4 |
| | 0508590 | Screw (low boy)..... | 4 |
| 15 | 0551524 | Right leg assembly (tand only)..... | 1 |
| 16 | 0509636 | Plug..... | 2 |
| 17 | 0551603 | Fluid action assembly (tand and low boy cart)..... | 1 |
| | 0551602 | Fluid action assembly (upright cart)..... | 1 |
| 18 | 0508553 | Screw..... | 2 |
| 19 | 0551104 | Suction set assembly (tand and low boy cart)..... | 1 |
| 20 | 9890212 | Return hose clamp (not shown)..... | 1 |

Motor A assembly

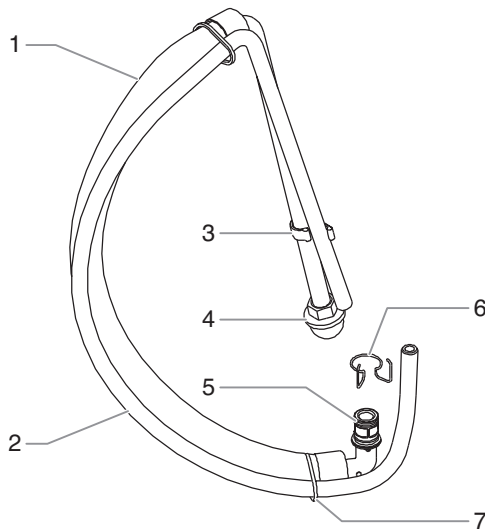
NOTE: All electrical work should be performed by a SprayTECH authorized service center.



| Item | Part # | Description | Quantity |
|------|---------|--|----------|
| 1 | 0551616 | Fan..... | 1 |
| 2 | 0551598 | Front end bell assembly w/ motor | 1 |
| 3 | 0508558 | Electronic cover | 1 |

| Item | Part # | Description | Quantity |
|------|---------|--|----------|
| 4 | 0551611 | Electronic control assembly..... | 1 |
| 5 | 0551614 | Fan housing..... | 1 |
| 6 | 0551594 | Motor assembly (include item 1, 2, 4, and 5)..... | 1 |

Suction Set A assembly (P/N 0551104)

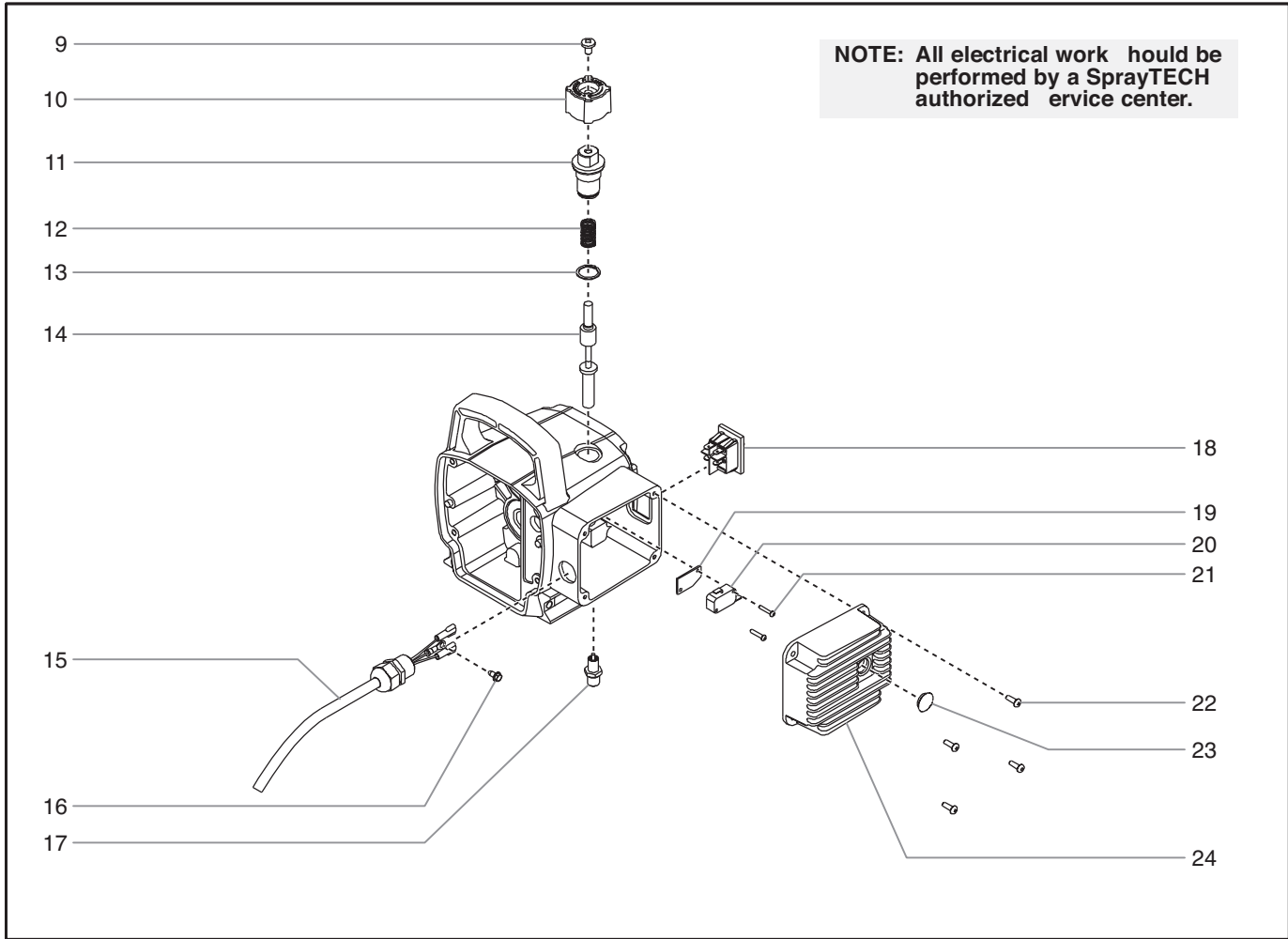
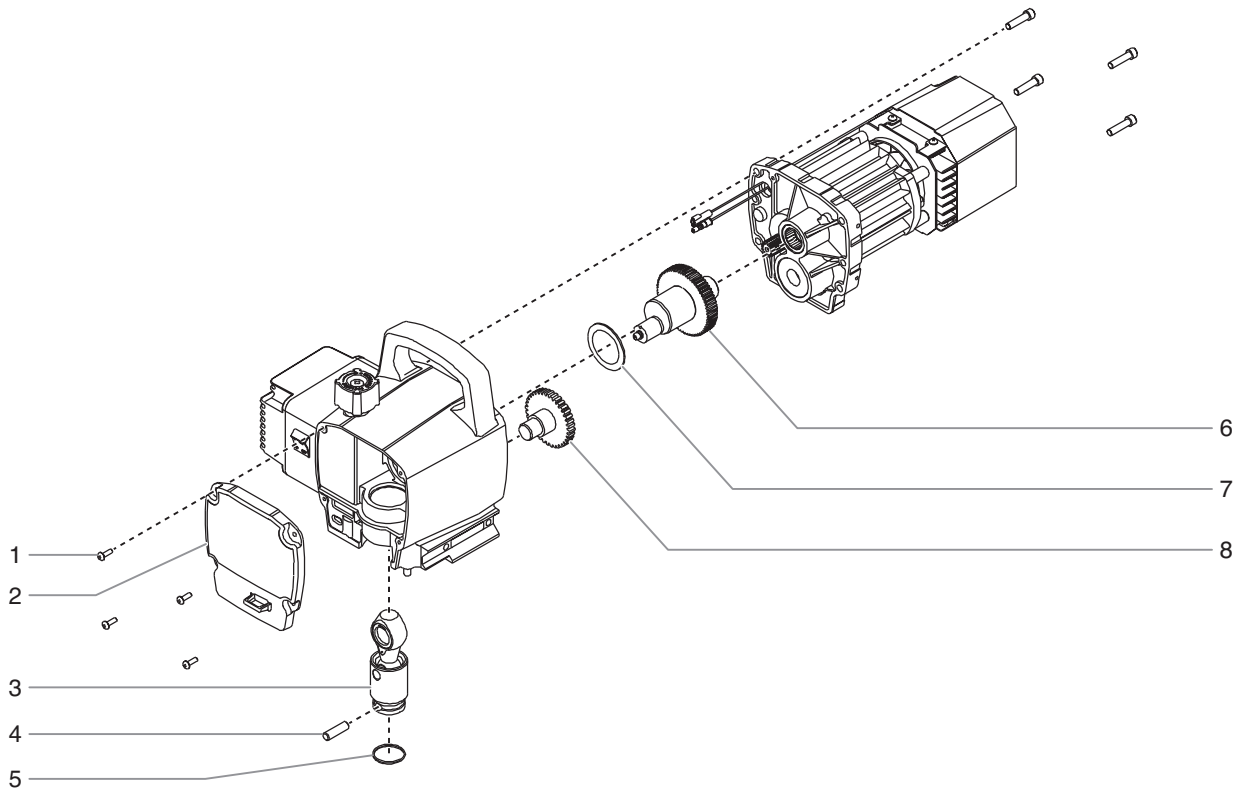


| Item | Part # | Description | Quantity |
|------|---------|----------------------------|----------|
| 1 | 0551437 | Siphon tube assembly | 1 |
| 2 | 0551439 | Return hose | 1 |
| 3 | 0279459 | Hose clip | 1 |
| 4 | 0295565 | Inlet screen | 1 |
| 5 | 9871105 | O-ring | 2 |
| 6 | 9822526 | Retaining ring..... | 1 |
| 7 | 9850638 | Tie wrap | 2 |

Label

| Part # | Description |
|---------|------------------------------------|
| 0551445 | Logo label, front |
| 0551457 | Logo label, left |
| 0551465 | Logo label, right |
| 0551485 | Warning label, explosion/injection |
| 0295805 | Shock hazard label |
| 0508330 | PRIME/SPRAY knob label |
| 0507856 | PRIME/SPRAY label |

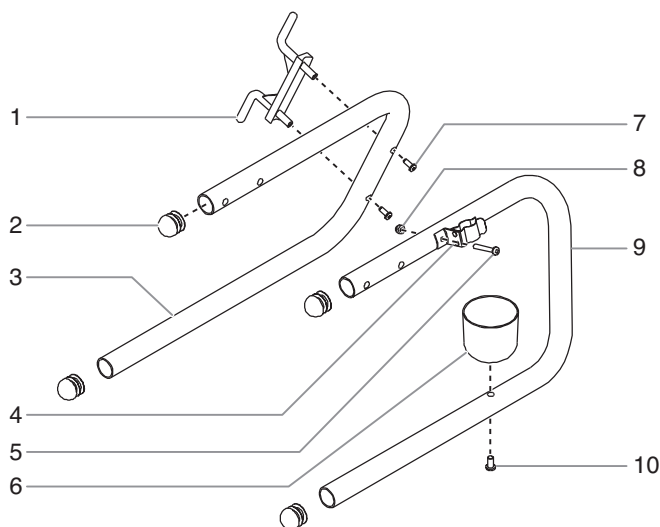
Gear Box A assembly



| Item | Part # | De cription | Quantity |
|------|---------|------------------------------|----------|
| 1 | 0509218 | Screw..... | 4 |
| 2 | 0551518 | Front cover..... | 1 |
| 3 | 0551541 | Slider a embly..... | 1 |
| 4 | 0507777 | Connecting pin..... | 1 |
| 5 | 0507768 | Retaining ring..... | 1 |
| 6 | 0508572 | Crank haft/gear a embly..... | 1 |
| 7 | 0508573 | Thru t wa her..... | 1 |
| 8 | 0509121 | Second tage gear..... | 1 |
| 9 | 0509219 | Screw..... | 1 |
| 10 | 0551513 | Pre ure control knob..... | 1 |
| 11 | 0551522 | Knob hou ing..... | 1 |
| 12 | 02712 | Knob pring..... | 1 |
| 13 | 9822522 | Wa her..... | 1 |
| 14 | 0551521 | Plunger..... | 1 |

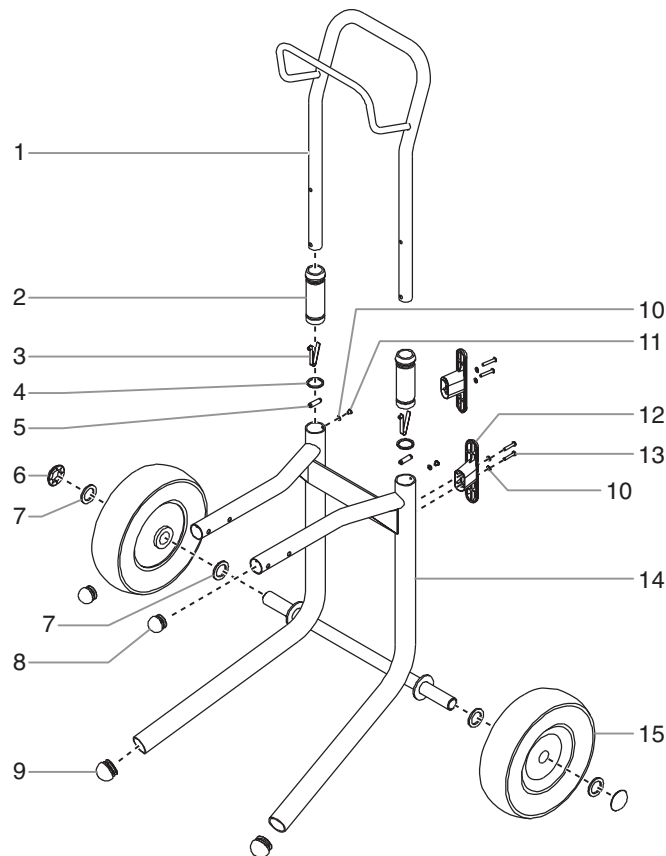
| Item | Part # | De cription | Quantity |
|------|---------|--|----------|
| 15 | 0551516 | Power cord a embly (tand)..... | 1 |
| | 0551432 | Power cord a embly (low boy and upright cart) | |
| 16 | 9800340 | Ground crew..... | 1 |
| 17 | 0551112 | Tran ducer a embly (include o-ring)..... | 1 |
| 18 | 9850936 | ON/OFF witch..... | 1 |
| 19 | 03662 | Micro witch in ulator..... | 1 |
| 20 | 0295490 | Micro witch..... | 1 |
| 21 | 9800604 | Screw..... | 2 |
| 22 | 0509218 | Screw..... | 4 |
| 23 | 0507751 | Port plug..... | 1 |
| 24 | 0551601 | Heat ink a embly (include item 22 and 23)..... | 1 |
| | 0551520 | Mechanical control a embly (include item 11-14) | |

Stand A embly



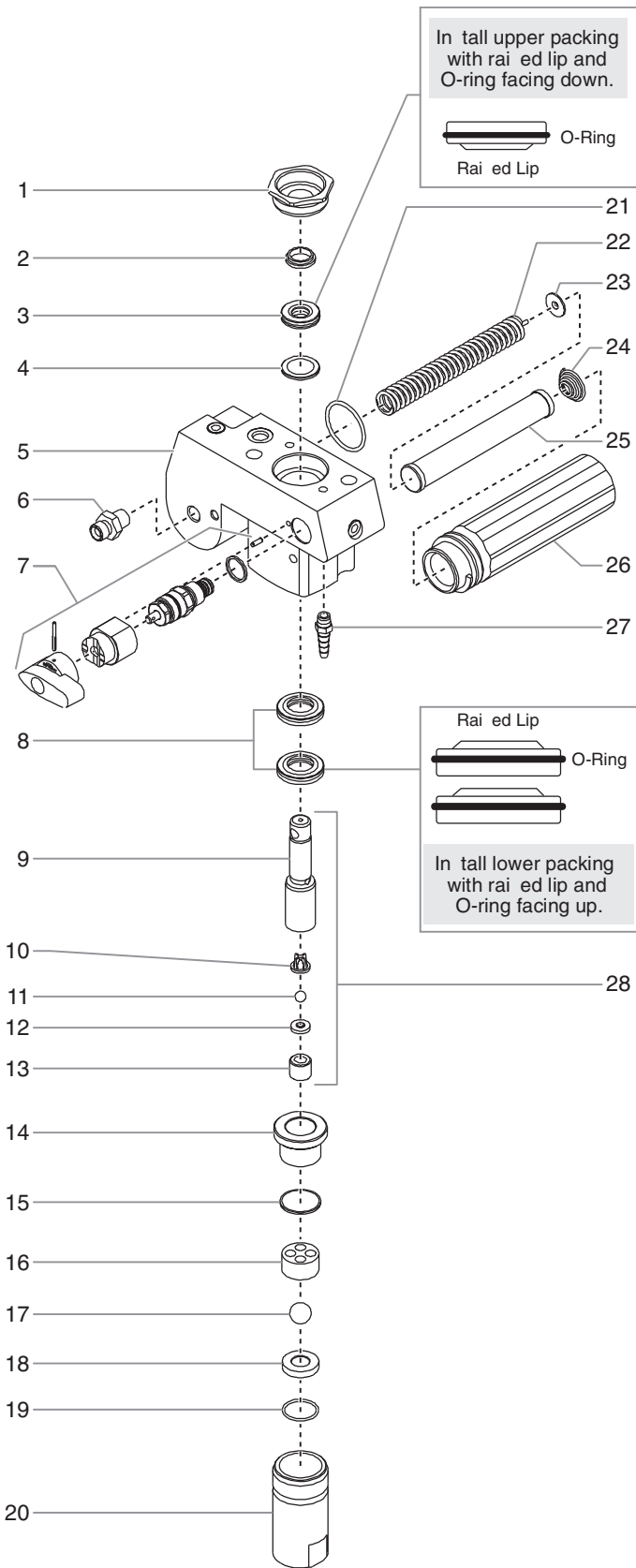
| Item | Part # | De cription | Quantity |
|------|---------|---|----------|
| 1 | 0508377 | Cord wrap..... | 1 |
| 2 | 0551525 | Plug..... | 4 |
| 3 | 0551526 | Left leg a embly (include item 1, 2, and 7)..... | 1 |
| 4 | 0551483 | Clip a embly..... | 1 |
| 5 | 0551484 | Screw..... | 1 |
| 6 | 0508381 | Drip cup..... | 1 |
| 7 | 0551527 | Screw..... | 2 |
| 8 | 0509856 | Nut..... | 1 |
| 9 | 0551524 | Right leg a embly (include item 2, 4, 5, 6, 8, and 10) | |
| 10 | 0507955 | Screw..... | 1 |

Upright Cart A embly (P/N 0551113)



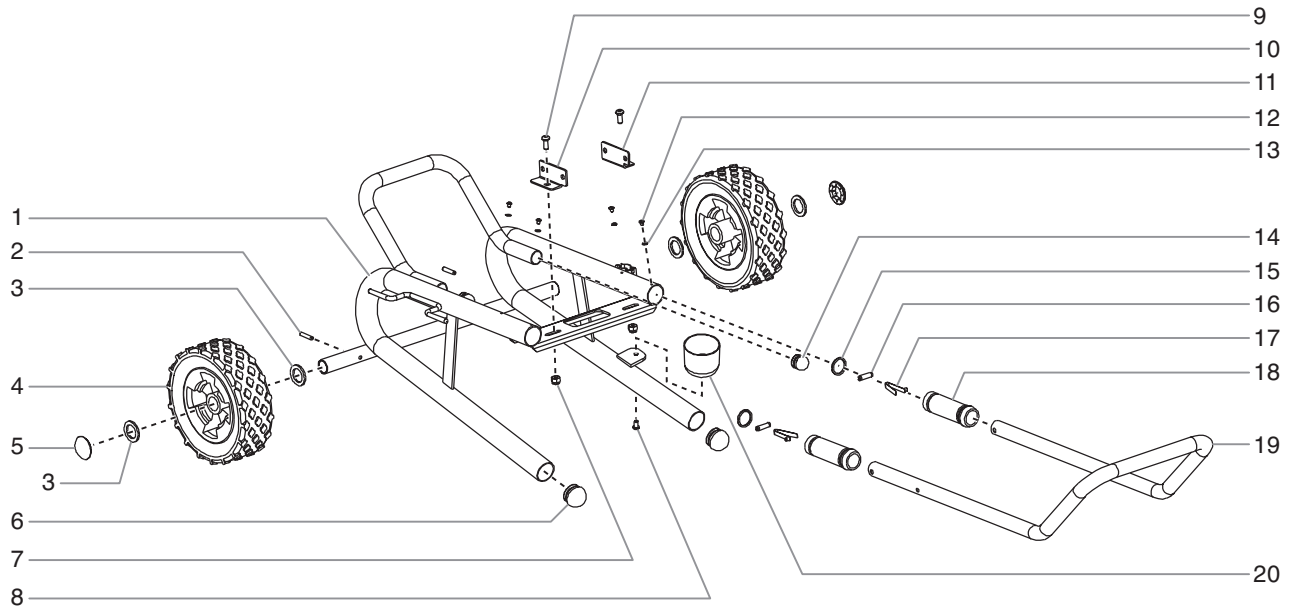
| Item | Part # | De cription | Quantity |
|------|---------|--|----------|
| 1 | 0551664 | Handle a embly (include item 2-5, 10 and 11)..... | 1 |
| 2 | 0295607 | Handle sleeve..... | 2 |
| 3 | 9841504 | Snap button..... | 2 |
| 4 | 0295609 | Handle wa her..... | 2 |
| 5 | 0295610 | Roll pin..... | 2 |
| 6 | 9890104 | Cap..... | 2 |
| 7 | 0294534 | Spacer..... | 4 |
| 8 | 0551550 | Plug..... | 2 |
| 9 | 0551548 | Plug..... | 2 |
| 10 | 0295606 | Wa her..... | 6 |
| 11 | 0295608 | Screw..... | 4 |
| 12 | 0507655 | Cord wrap..... | 2 |
| 13 | 0551555 | Screw..... | 4 |
| 14 | 0551665 | Cart weldment (include item 8 and 9)..... | 1 |
| 15 | 0278373 | Wheel..... | 2 |

Fluid Section A Assembly
(Stand and Low Boy Cart P/N 0551603)
(Upright Cart P/N 0551602)



| Item | Part # | Description | Quantity |
|------|---------|--|----------|
| 1 | 0508664 | Retainer nut | 1 |
| 2 | 0508665 | Piston guide | 1 |
| 3 | 0551538 | Upper packing assembly | 1 |
| 4 | 0551535 | Spacer | 1 |
| 5 | 0551604 | Pump manifold | 1 |
| 6 | 0509873 | Outlet fitting, 1/4" | 1 |
| 7 | 0507690 | PRIME/SPRAY valve assembly | 1 |
| 8 | 0551539 | Lower packing assembly | 2 |
| 9 | 0551537 | Piston rod | 1 |
| 10 | 0295307 | Outlet valve cage | 1 |
| 11 | 50164 | Outlet valve ball | 1 |
| 12 | 13359 | Outlet valve seat | 1 |
| 13 | 13481 | Outlet valve retainer | 1 |
| 14 | 0508676 | Piston bushing | 1 |
| 15 | 0508739 | Nylon washer | 1 |
| 16 | 0508677 | Inlet valve cage | 1 |
| 17 | 0508678 | Inlet valve ball | 1 |
| 18 | 0551534 | Inlet valve seat | 1 |
| 19 | 0509582 | O-ring, Teflon | 1 |
| 20 | 0508680 | Inlet valve housing (stand and low boy cart) | 1 |
| | 0508690 | Inlet valve housing (upright cart) | 1 |
| 21 | 0508604 | Filter seal | 1 |
| 22 | 0508749 | Filter support spring | 1 |
| 23 | 0508603 | Adapter | 1 |
| 24 | 0508602 | Filter spring | 1 |
| 25 | 0508748 | Filter | 1 |
| 26 | 0508601 | Filter housing | 1 |
| 27 | 0551530 | Return hose fitting, 1/8" | 1 |
| 28 | 0551536 | Piston assembly (include item 9-13) | 1 |
| | 0551605 | Filter assembly (include item 21-26) | 1 |
| | 0551533 | Repacking kit (include item 2-4, 8, 10-11, 15, 17, and 19) | 1 |
| | 0551509 | Lower seal insertion tool | 1 |

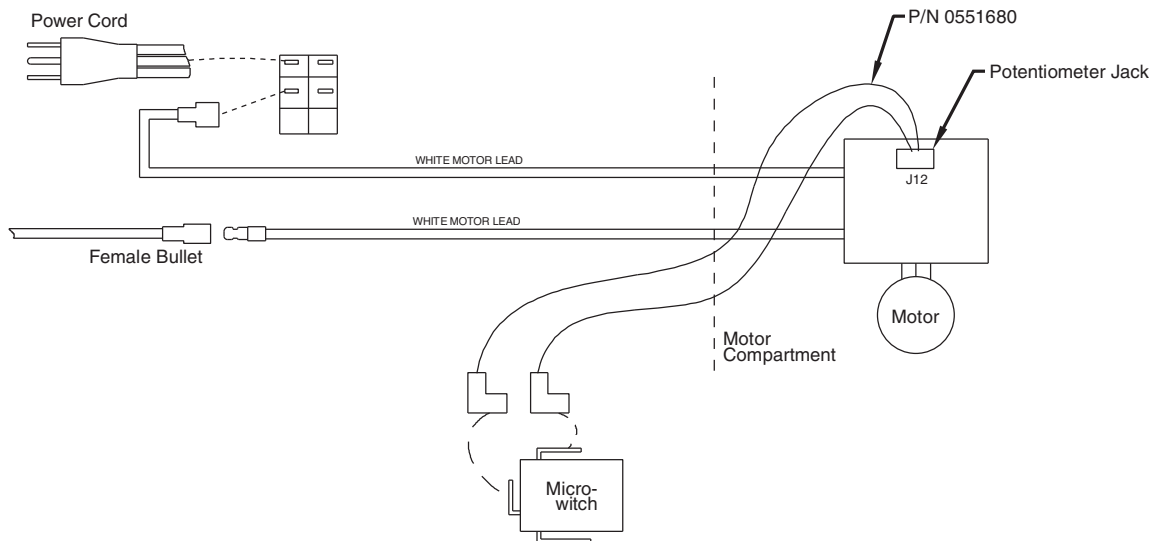
Low Boy Cart A Assembly (P/N 0551547)



| Item | Part # | Description | Quantity | Item | Part # | Description | Quantity |
|------|---------|--|----------|------|---------|---|----------|
| 1 | 0551608 | Cart weldment (include item 6 and 14)... | 1 | 12 | 0295608 | Screw..... | 4 |
| 2 | 0507956 | Roll pin..... | 2 | 13 | 0295606 | Washer..... | 4 |
| 3 | 0294534 | Wheel pacer..... | 4 | 14 | 0551525 | Plug..... | 2 |
| 4 | 0270394 | Wheel..... | 2 | 15 | 0295609 | Handle washer..... | 2 |
| 5 | 9890104 | Cap..... | 2 | 16 | 0295610 | Roll pin..... | 2 |
| 6 | 0551548 | Plug..... | 2 | 17 | 9841504 | Snap button..... | 2 |
| 7 | 0295615 | Lock nut..... | 2 | 18 | 0295607 | Sleeve..... | 2 |
| 8 | 0507955 | Screw..... | 1 | 19 | 0551609 | Handle assembly (include item 12, 13, and 15-18..... | 1 |
| 9 | 0295618 | Screw..... | 2 | 20 | 0508381 | Drip cup..... | 1 |
| 10 | 0551551 | Mounting bracket, left..... | 1 | | | | |
| 11 | 0551552 | Mounting bracket, right..... | 1 | | | | |

Electrical Schematic

NOTE: All electrical work should be performed by a SprayTECH authorized service center.



Limited Warranty

SprayTECH, a division of Wagner Spray Tech Corporation ("SprayTECH"), warrants that at the time of delivery to the original purchaser for use ("End User"), the equipment covered by this warranty is free from defect in material and workmanship. With the exception of any special, limited, or extended warranty published by SprayTECH, SprayTECH's obligation under this warranty is limited to replacing or repairing without charge those parts which, to SprayTECH's reasonable satisfaction, are shown to be defective within twelve (12) months after sale to the End User. This warranty applies only when the unit is installed and operated in accordance with the recommendation and instructions of SprayTECH.

This warranty does not apply in the case of damage or wear caused by abrasion, corrosion or misuse, negligence, accident, faulty installation, substitution of non-SprayTECH component parts, or tampering with the unit in a manner to impair normal operation.

Defective parts are to be returned to an authorized SprayTECH sales / service outlet. All transportation charges, including return to the factory, if necessary, are to be borne and prepaid by the End User. Repaired or replaced equipment will be returned to the End User transportation prepaid.

THERE IS NO OTHER EXPRESS WARRANTY. SPRAYTECH HEREBY DISCLAIMS ANY AND ALL IMPLIED WARRANTIES INCLUDING, BUT NOT LIMITED TO, THOSE OF MERCHANTABILITY AND FITNESS FOR A PARTICULAR PURPOSE, TO THE EXTENT PERMITTED BY LAW. THE DURATION OF ANY IMPLIED WARRANTIES WHICH CANNOT BE DISCLAIMED IS LIMITED TO THE TIME PERIOD SPECIFIED IN THE EXPRESS WARRANTY. IN NO CASE SHALL SPRAYTECH LIABILITY EXCEED THE AMOUNT OF THE PURCHASE PRICE. LIABILITY FOR CONSEQUENTIAL, INCIDENTAL OR SPECIAL DAMAGES UNDER ANY AND ALL WARRANTIES IS EXCLUDED TO THE EXTENT PERMITTED BY LAW.

SPRAYTECH MAKES NO WARRANTY AND DISCLAIMS ALL IMPLIED WARRANTIES OF MERCHANTABILITY AND FITNESS FOR A PARTICULAR PURPOSE WITH RESPECT TO ACCESSORIES, EQUIPMENT, MATERIALS OR COMPONENTS SOLD BUT NOT MANUFACTURED BY SPRAYTECH. THOSE ITEMS SOLD, BUT NOT MANUFACTURED BY SPRAYTECH (SUCH AS GAS ENGINES, SWITCHES, HOSES, ETC.) ARE SUBJECT TO THE WARRANTY, IF ANY, OF THEIR MANUFACTURER. SPRAYTECH WILL PROVIDE THE PURCHASER WITH REASONABLE ASSISTANCE IN MAKING ANY CLAIM FOR BREACH OF THESE WARRANTIES.

Patent

The following products are covered by one or more of the following U.S. patents :

| | | | | | | |
|-----------|-----------|-----------|-----------|-----------|-----------|-----------|
| 6,031,352 | 5,848,566 | 5,769,321 | 5,725,364 | 5,671,656 | 5,435,697 | 5,228,842 |
| 5,346,037 | 5,252,210 | 5,217,238 | 5,192,425 | 4,908,538 | 4,768,929 | 4,744,571 |
| D384,676 | 6,179,222 | 5,934,883 | 4,723,892 | | | |

Material Safety Data Sheet (MSDS) are available on SprayTECH's website or by calling Technical Service.

SprayTECH
 1770 Fernbrook Lane
Minneapolis, MN 55447

Technical Assistance: 1-800-292-4637
Order Entry: 1-800-443-4500
Fax: 1-800-525-9501

www.praytechinc.com