



## TROUBLESHOOTING

Problem	Cause	Remedy
Sprayer does not start up.	Sprayer not plugged in. ON/OFF switch OFF. Blown fuse in circuit. No voltage or low voltage at wall plug. Unit turned off under pressure. Damaged motor cord or extension cord, or capacity too low. Thermal overload tripped. Motor problem.	Plug in. Flip switch to ON. Replace fuse. Test power supply voltage. Turn Prime/Spray Knob to prime position. Replace extension cord.  Allow motor to cool. Move to a shady spot. Take to Wagner Authorized Service Center.
Sprayer starts up but does not draw in paint. (Make sure Prime/Spray Knob is in prime position.)	Unit will not prime or has lost prime. No paint. Suction tube not totally immersed in paint. Suction set filter clogged. Hopper screen clogged. Suction tube loose at inlet valve. Inlet valve stuck. Outlet valve stuck.  Prime spray valve plugged or dirty. Inlet valve worn or damaged. Diaphragm problem. Hydraulic oil level low or empty.	Reprime unit. Immerse suction tube in paint.  Clean filter. Clean screen Clean connection and tighten. Clean inlet valve. Clean outlet valve. Replace any worn parts. Take to Wagner Authorized Service Center. Clean or replace. Take to Wagner Authorized Service Center. Take to Wagner Authorized Service Center.
Sprayer draws up paint but drops away when gun is opened.	Worn spray tip. Suction set filter clogged. Optional hopper screen clogged. Gun or spray tip filter plugged.  Paint too heavy or coarse. Dirty or worn outlet valve assembly. Inlet valve worn or damaged.	Replace with new tip. Clean filter. Clean screen. Clean or replace filter. Keep extra filters on hand.  Thin or strain paint. Clean or replace. Replace valve.
Spray gun won't shut off.	Worn ball or seat. Foreign matter or paint build-up or dried paint between ball and seat. (Caused by improper cleaning of gun.)	Take to Authorized Wagner Service Center. Take to Authorized Wagner Service Center.
Spray gun leaks.	Worn or dirty internal parts. (Caused by improper cleaning of gun.)	Take to Authorized Wagner Service Center.
Tip assembly leaks.	Assembled incorrectly. Worn seal.	Check assembly. Replace seal.
Spray gun won't spray.	Spray tip, gun filter or tip filter plugged.  Spray tip in Clean position.	Clean spray tip. Clean or replace gun filter. Clean or replace tip filter. Put tip in Spray position.

**NOTE:** When the Prime/Spray Knob is on Spray  $\text{I}^{\text{c}}$  and there is flow through the return tube, remove the priming valve and clean or replace.

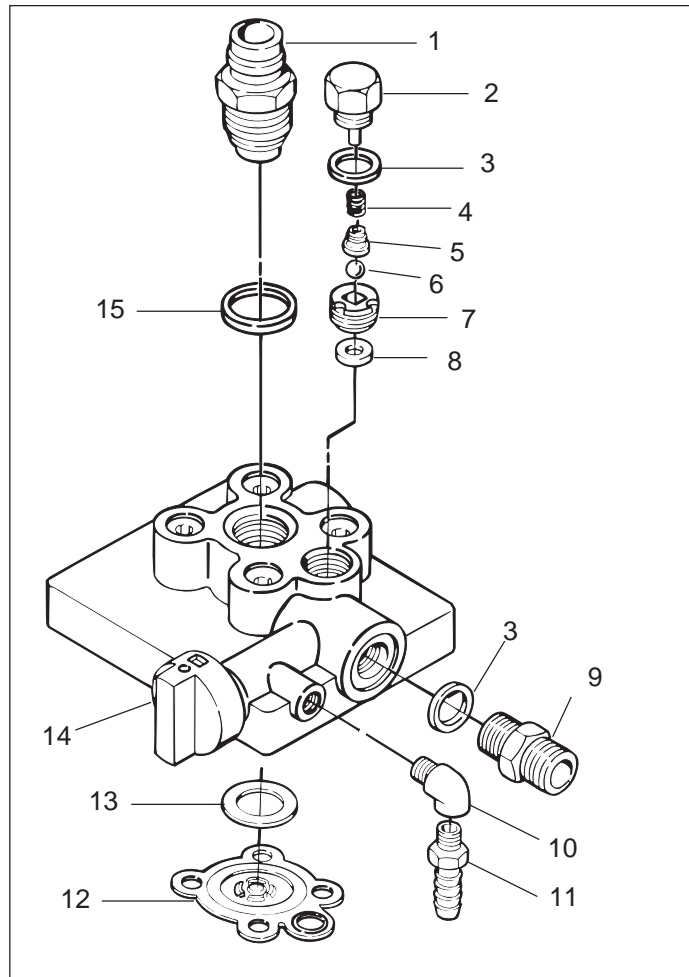
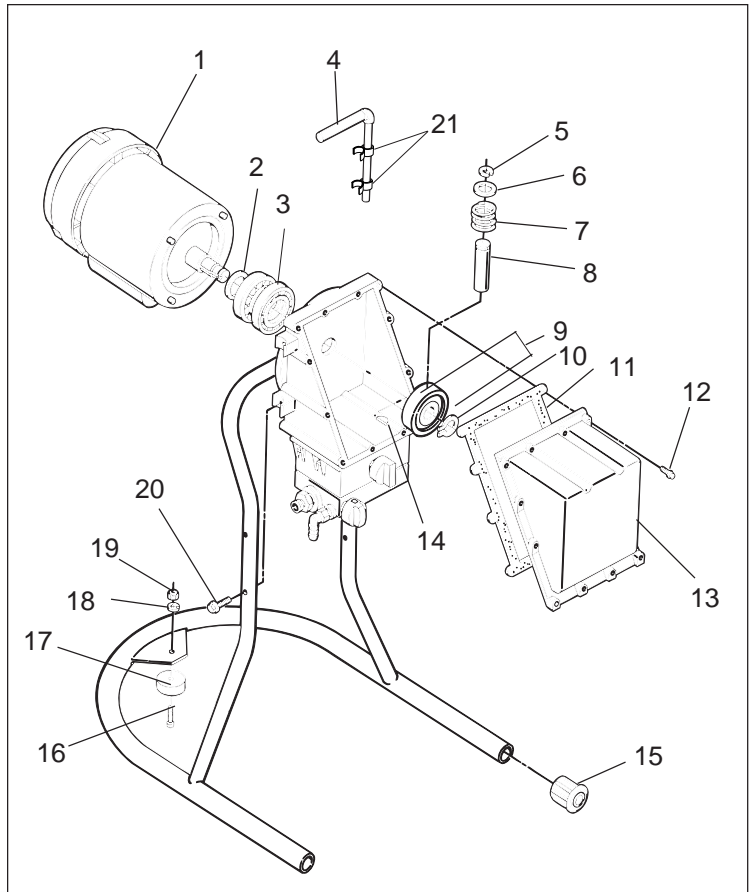
**NOTE:** The electric motor should always be kept clean and dry. Paint acts as an insulator, therefore too much paint on the motor will cause the motor to overheat.

## TROUBLESHOOTING

Problem	Cause	Remedy
Paint tailing.	Pressure is set too low. Gun, tip or suction filter plugged. Suction tube loose at inlet valve. Tip worn. Paint too thick.	Increase pressure. Clean filters. Tighten suction tube fitting. Replace tip. Thin paint.
<div style="display: flex; align-items: center;"> <div style="border: 2px solid black; padding: 5px; margin-right: 10px;">  <b>WARNING</b> </div> <div> <p>Follow Pressure Relief Procedure before performing any of these operations since the motor will restart without warning when the motor cools sufficiently.</p> </div> </div>		
Thermal overload tripped.	Motor overheated. Extension cord too long or too small gauge.  Paint build up on motor. Restart under pressure. Unit sitting in hot sun.	Allow to cool 15 to 30 minutes. Allow to cool, replace cord with one shorter or with larger gauge. Clean paint from motor. Restart in Prime  mode. Move to shady location.
Motor will not restart.	Unit under system pressure.	Relieve pressure. Follow Pressure Relief Procedure, Page 6. Allow motor to cool 15 to 30 minutes.
Leaking oil from Pump Block.	Pump Block bolts have loosed.	Tighten with wrench. See Maintenance 17.3.

## Parts Diagram – Final Assembly

ITEM	PART NO.	DESCRIPTION	QTY.
1	0281115	Motor, 3/4 hp	1
2	0270524	Seal, lip	1
3	0270490	Bearing, ball	2
4	0270205	Filter, assy.	1
5	9822515	Ring, retainer	1
6	0270501	Washer	1
7	0005311	Spring	1
8	0270488	Piston	1
9	0270218	Cam, bearing assy.	1
10	0047393	Ring, retainer	1
11	0288774	Gasket, cover	1
12	0088328	Screw, cover	12
13	0288772	Cover, front	1
14	0089829	Key, woodruff	1
15	51675	Foot, rubber	2
16	9800319	Screw, frame	1
18	0090628	Foot, rubber	1
18	9821503	Washer, lock	1
19	9810108	Nut	1
20	9802519	Screw, frame	4
21	0288406	Clamp	2

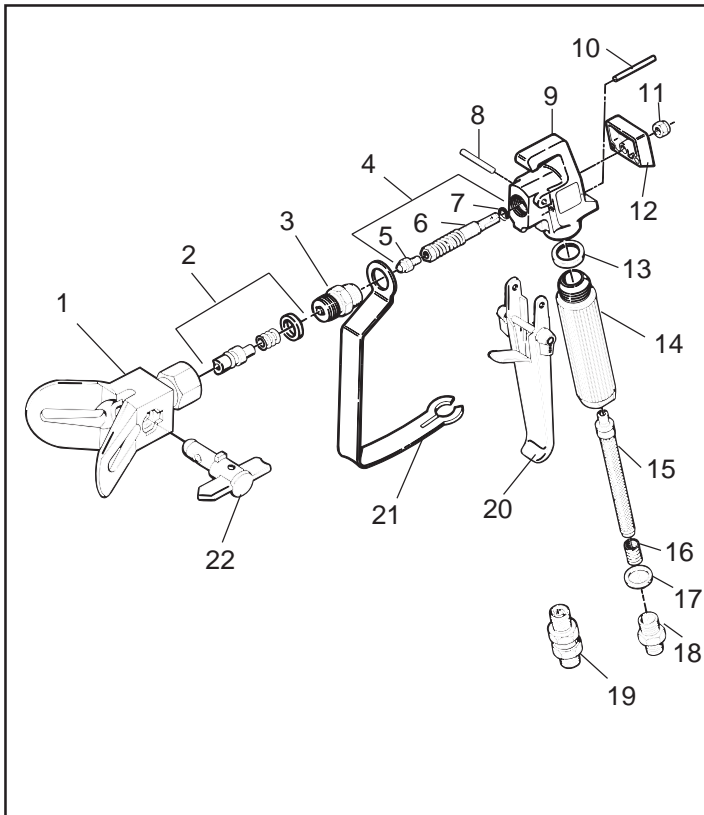
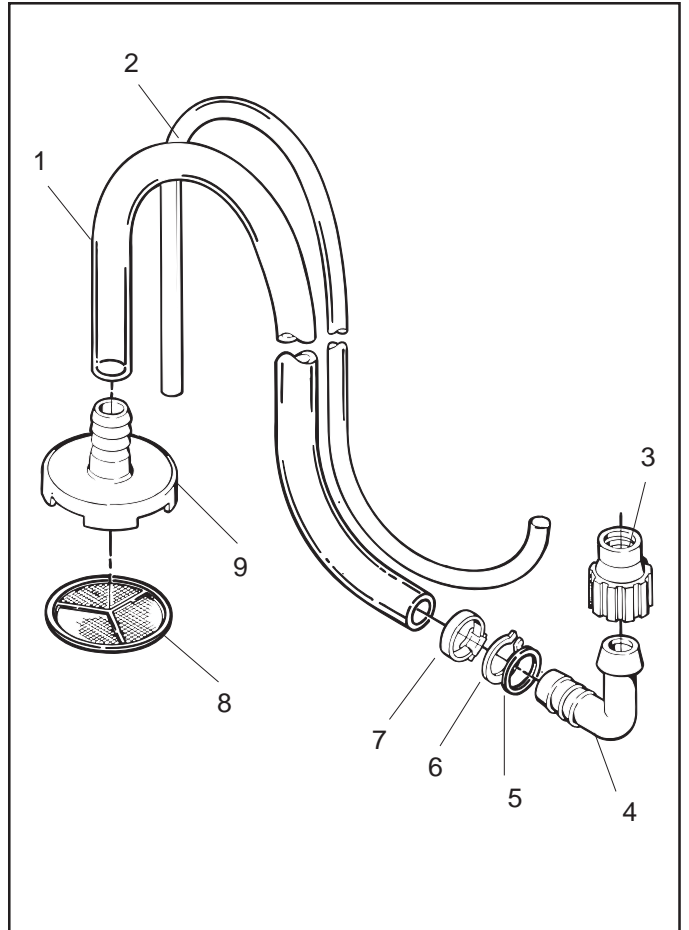


## Parts Diagram – Paint Pump Assembly

ITEM	PART NO.	DESCRIPTION	QTY.
1	0089477	Valve, inlet (including item 15)	1
2	0270487	Cap, end	1
3	9970103	Washer	1
4	0270499	Spring	1
5	0270497	Support, spring	1
6	0270491	Ball, .3125 dia.	1
7	0270197	Seat assy., outlet	1
8	0089494	Seal, washer	1
9	0288379	Fitting, outlet	1
10	9885552	Elbow	1
11	9885553	Fitting, barbed	1
12	0270201	Diaphragm Assy	1
13	0270494	Ring, Diaphragm	1
14	0288748	Knob (only)	1
15	0089482	Washer, sealing	1

## Parts Diagram – Suction Set Assembly

Item	Part No.	Description	Qty.
1	0270503	Hose, suction	1
2	0270508	Tubing, return	1
3	0270310	Nut, suction	1
4	0281314	Elbow	1
5	0281315	Washer, 1.05 i.d.	1
6	9822508	Ring retainer	1
7	0089882	Clamp, hose	1
8	0270369	Screen, filter	1
9	0270718	Filter, housing	1



Item	Part No.	Description	Qty.
1	0154680	Tip Guard & base	1
2	0154693	Seal Kit	1
3	0043225	Diffuser	1
4	0043230	Ball Valve Assy (Includes Items 5,6,&7)	1
5	0043215	Valve Ball Holder, Complete	1
6	0043232	Valve Spring Unit	1
7	9922703	Snap Ring, RW5, DIN 7993	1
8	9930603	Pin, Trigger, 3 X 32 DIN 1475	1
9	0149318	Housing	1
10	0043411	Pin, Cylindrical	2
11	9910201	Nut, Hex, M5, DIN 985	1
12	0149349	Block, Retainer	1
13	0043303	Washer, Sealing	1
14	0161313	Handle	1
15	-----	Filter	1
16	0043590	Spring	1
17	0043260	Washer	1
18	0071321	Fitting, High Pressure, 1/4 - 18 NPS	1
19	0043269	Swivel Joint, 1/4 - 18 NPS (Optional)	1
20	0161230	Trigger, Complete	1
21	0149319	Guard, Trigger	1
22	-----	Reversible Spray Tip	1