

Fractal Finance® 3.0

For MetaStock®

GUIDE BOOK

Written by Erik Long

All Rights Reserved
Copyright ©2002

Printed in the USA

TETRAHEX
555 W. Madison St.
Chicago, IL 60661

<http://www.tetrahex.com>

Fractal Finance Market Analysis Software © is a product of Tetrahex, and is protected under the Copyright Laws of the United States of America, Title 17 US Code. Fractal Finance is a Trademark of Tetrahex.

TETRAHEX ©2000 Tetrahex, Fractal Finance is a registered trademark of Tetrahex. MetaStock® is a trademark of Equis International, Inc., Windows is a trademark of Microsoft Corporation. All other product names or services mentioned are trademarks or registered trademarks of their respective owners.

PREFACE

Thank you for purchasing Fractal Finance. As the world leader in fractal analysis software, Tetrahex is sure that Fractal Finance will be a valuable addition to your trading arsenal. Tetrahex has designed this analytical program with simplicity in mind. You don't need a trading background to use Fractal Finance. Our clear instructions will get you up and running quickly. Although Fractal Finance is designed to work right out of the box, we have added features that allow experimenters to design custom indicators or trading systems. With the introduction of formula mnemonics, Tetrahex has made it easy for the experimenter to integrate Fractal Finance algorithms with other formulas. This combination allows you to work on the cutting edge of Chaos research.

The Fractal Finance Guide is both an introduction to Chaos theory and the manual for program. You will be introduced to fractals and their application to financial markets. Each of the indicators in Fractal Finance is described, including operational theory and integration. A quick users guide is included at the end of this book along with a glossary. With The Fractal Finance Guide, you will learn how to find which markets to trade, how to trade them, and how to customize the program. Fractal Finance promises to make your trading experience that much more pleasurable. Enjoy!

FRACTAL FINANCE 3.0 INSTALLATION

System requirements: Metastock or Metastock Pro, version 7.03 or higher. Metastock must be installed on your system before installing Fractal Finance. If you are upgrading from a previous version of Fractal Finance, please see Upgrade Info below.

New Users

If Metastock is currently running, close it. Then, run Fractal Finance 3_0 Installer.exe. Fractal Finance will self-install into Metastock. Upon completion, Metastock will have these new items:

- Fractal Finance 3.0 Expert
- 19 new Fractal Finance Indicators
- 20 new System Tests.
- 2 new Explorers.

Also, Fractal Finance Help will be added to the Help menu in Metastock.

After installation is complete, you will be allowed to request your Personal Init Code. The process is very simple: Launch Metastock. While it is loading, your Fractal Finance Activation window will appear.

To activate your copy, please request your Personal Init Code. The easiest way to do this is by using the links in the Fractal Finance Help file. The other alternative is to go to the Fractal Finance folder in your Start Menu and select Activate.

Copy and paste two values from the top of your Activation window into the email: **MID**, and **Site Code**. Send the email to support@tetrahex.com.

After you have sent your request, hit CANCEL on the Activation window.

You will receive your Personal Init Code shortly by return email. When you receive it, launch Metastock. Then copy your Personal Init Code, paste it into your Activation window in the space provided, and hit CONTINUE. Your personal copy of Fractal Finance 3.0 is now Active. Be sure to keep your Personal Init Code in a safe place in case Fractal Finance needs to be re-installed in the future.

If you do not wish to activate at this time, no problem. Click Cancel on the Activation window. Metastock will operate as usual. You can return to the activation window at any time by launching Metastock.

New in version 3.0.

Indicators have been optimized for speed.

Help files. Fractal Finance Help has been integrated into the Help Menu in Metastock. Extensive help is available.

Fractal Dimension Index. This adds a new and valuable gauge of the fractal sentiment.

But what about my old formulas? If you have created System Tests or other tools using formulas of Fractal Finance 2.x PRO, they will still work with the new formulas.

UNINSTALL INSTRUCTIONS

Before uninstalling, it's very important to remove your Personal Init Code Site License. (This does not apply if you never received your Personal Init Code.) The process is very simple:

1. Ensure that Metastock is not currently running. Find your Personal Init Code that you received when you activated your copy of Fractal Finance.
2. On your computer keyboard, toggle your Scroll Lock key so that it is ON. (The Scroll Lock key is most often found in the upper right of your keyboard. It lights up when it's on.)
3. Launch Metastock. While it is loading, your Fractal Finance Activation window will appear.
4. Select the option to Remove License.
5. Paste your Personal Init Code into the space provided, and hit Continue. You will be prompted for confirmation.
6. After you confirm, the Activation Window will provide you with your Remove Code. Be sure to copy your Remove Code to a safe place in case it's needed later.
7. You may now uninstall Fractal Finance by selecting it in Add/Remove Programs in the control panel.

Please note that there is no way for us to remove the actual Fractal Finance formulas from within Metastock. There is no harm in keeping them, but they will not function after uninstalling. If you wish to remove them, please follow the Upgrade instructions above.

CONTENTS

Topic	Page
An Introduction to Chaos theory and Fractals	6
Why Chaos Theory Is Useful	11
The Application of Chaos to the Markets	14
The Fractal Dimension Index	17
The Fractal Finance MACD and Rhythm Indicator	21
Identifying Markets with Trading Potential	23
Putting It All Together	26
Quick Reference Guide	28
Glossary	33
Figures	35

AN INTRODUCTION TO CHAOS THEORY AND FRACTALS

Welcome to the wonderful world of Chaos. What is Chaos? Chaos is lightening, weather patterns, earthquakes, and financial markets. In short, Chaos is a nonlinear dynamic system that appears to be random when in effect is a higher form of order.

Technically, Chaos refers to a state of unpredictable, nonlinear, dynamics. However, the term is often used interchangeably with Complexity.

Complexity is the point where the transition to Chaos takes place and is really what we are interested in when studying markets. Order and randomness exist simultaneously, allowing a degree of predictability. Both social and natural systems including private, governmental, and financial institutions fall within this category. People design these complex systems and then find that they take on a life of their own. Each of these networks is sustained by complex feedback loops, re-entering the system at unpredictable points in their cycles. Because of this little understood abstraction, people go about their business bewildered by the very systems they helped to create.

It is not surprising that modern Western culture has had such a difficult time with the concept of Chaos. Early in European history, specifically in Greece, Plato educated his students in a form of rationalism that suggested that the real world is a construct of pure, symmetric, smooth forms. This world could only be understood through the mind and was considered the polar opposite of the world we live in.

Our world was considered to be a fragmented mess of asymmetric, rough objects, subject to decay. Euclid continued to propagate this philosophy through the development of Euclidean geometry. This symmetrical form of mathematics maintained that geometry could explain the real world, but not our world because of its complex chaotic nature. Although great strides in civilization have been made using Euclidean mathematics, some introspection allows us to comprehend its limitations.

To understand why financial markets are nonlinear, we must examine their source. Markets are a construct of the human mind and social system. The actions of the markets are shaped by the subjective ideas that form in the human brain. The mammalian brain, lungs, arterial system, and most other human systems are nonlinear by nature. If the markets are formed by the combined interpretations of the human brain, it's reasonable to deduce that the market will in turn act nonlinearly.

Chaos is the realm of the nonlinear and therefore important to us as investors. Because financial markets are chaotic, we should use nonlinear tools to forecast market dynamics. Linear tools are doomed to failure because they are equivalent to describing objects in our

world as cones, spheres, and squares.

Regardless of the type of technical analysis tool used, linear mathematics does not offer a description accurate enough to create reliable trading forecasts. What we need are tools that identify the hidden order in an apparently random process (i.e., the markets.) The first step toward that goal is identifying what underlies a nonlinear, chaotic system.

In order for a system to be deemed chaotic it must have a fractal dimension. A fractal is an object in which individual parts are similar to the whole. In effect, fractals are self-similar. The term fractal was first coined by the famous mathematician Benoit Mandelbrot:

Why is geometry often described as cold and dry? One reason lies in its inability to describe the shape of a cloud, a mountain, a coastline, a tree. Clouds are not spheres, mountains are not cones, coastlines are not circles, and bark is not smooth, nor does lightning travel in a straight line...Nature exhibits not simply a higher degree but an altogether different level of complexity. The number of distinct scales of length of patterns is for all purposes infinite. The existence of these patterns challenges us to study these forms that Euclid leaves aside as being formless, to investigate the morphology of the morphous. Mathematicians have disdained this challenge, however, and have increasingly chosen to flee from nature by devising theories unrelated to anything we can see or feel.

A fractal dimension is the measurement of the imperfect world in which we live. The manifestations of our world are not simple Euclidean objects with perfect symmetry. On the contrary, objects in our space are infinitely complex. If you examine any object with a microscope, more detail is revealed as the scale changes. In addition to various levels of detail, most objects in nature demonstrate self-similarity. Self-similarity is the organizing principle of fractals. Because of this, fractals will maintain their same dimension regardless of the scale used.

Regularity in irregularity is important as each time frame will have the same fractal pattern. This also tells us that markets are natural phenomena rather than mechanical processes. The significance of this is high since most that use technical analysis lose money consistently. Why? These traders are applying linear mathematical principles to a nonlinear natural system. When we apply fractal geometry to the markets, we use the right tool to forecast price movement more accurately. *These are the principles that form the groundwork for Fractal Finance.*

To further describe fractal geometry, one must have a clear understanding of dimensionality. According to Euclidean geometry, only solid objects are truly three-

dimensional. We can see the limitations this imposes by looking at various objects in our three dimensional space. In your living room alone you are likely to have objects that do not conform to Euclidean geometry.

Two examples commonly used to impress this idea into the minds of students are the whiffle ball and islands. The whiffle ball resides in three dimensional space, but because of the holes in its surface it is not differentiable and therefore not a three-dimensional object. The true dimension is somewhere between two and three dimensions. This translates to a fraction of a dimension so that the whiffle ball must be measured using a fractal dimension.

An island is another example of the power of fractal scaling and measurement. If you try to measure the perimeter of an island, England, for example, you encounter various dilemmas. The first problem is the unit of measurement. If the coast is measured with a foot long ruler, the scale and length will be different than if it is measured with a one-inch ruler.

What is interesting about this is that in theory the scales will continue into infinity. This becomes a problem because the Euclidean measuring device does not offer an accurate measurement of the island. Were the perimeter of the island symmetrical, the length of the coastline would have an absolute value. Because almost all natural shapes are irregular, standard geometry is not an efficient tool to measure them.

The island problem led to a fantastic discovery when Mandelbrot invented a method to measure natural, irregular objects. Mandelbrot labeled his invention the *fractional dimension*.

After various experiments, Mandelbrot applied his technique to the cotton market. It became apparent that the cotton market is a natural system similar to that of a river. This was a significant discovery because it meant that linear trading techniques are not appropriate for that market.

The second discovery Mandelbrot made was that the fractional dimension remains constant over various degrees of magnification. Once the fractional dimension for a market is discovered it can be applied to multiple time frames. This is information we are interested in as traders.

Although there has been no formal mathematical correlation between fractals and chaos, you can easily see the connection by watching a bifurcation program in action. Bifurcation is the process that takes place when one answer splits between two potential answers in a system.

This process can continue for many generations. As the number of generations increases, the system moves closer to a point of complete chaos.

Figure 1 is a bifurcation diagram of the Logistic Equation. Notice the complexity as (a) approaches 1. After 0.9 the bifurcation region becomes chaotic. In this chaotic region there is still an inherent order to the system. The ridges represent areas of higher probability. The white areas represent areas where order returns to the system. Within these white areas are miniature bifurcation diagrams. These continue indefinitely at smaller and smaller scales. Because the chaotic area is composed of fractals, we know that there is a direct link between fractals and nonlinear systems.

Any discussion of fractals would be incomplete without an in-depth examination of *fractal time*. In fractal time randomness and determinism coexist. The human lung is an example. The lung has global structure and local randomness. If you view any number of healthy lungs, they all have a similar global structure that identifies them as lungs. Although the lungs resemble each other, they also have local randomness or subtle qualities that make each one different.

The same randomness and determinism apply to the way we view time. Random events are perceived as unpredictable and deterministic events as predictable. In reality, the majority of events are actually a combination of these extremes. Natural systems appear to prefer coexisting randomness and determinism because it forms the basis of efficient evolution. This blend of extremes applies to the financial markets just as it does to other natural systems.

To better understand the concept of simultaneous randomness and determinism, consider the *Chaos Game*. To play, start with three points that outline a triangle. Label the points (1,2), (3,4), (5,6). This is the playing board for the game and is shown in Figure 2. Now, pick a point at random. This point can be within or outside of the triangle outline. Label the point "P." Roll a die. Proceed halfway from point "P" to the point labeled with the rolled number, and plot a new point. If you roll a 6, move halfway from "P" to the angle labeled C(5,6) and plot a new point (Figure 3).

Repeat these steps 10,000 times and throw out the first 50 points as transients. You now end up with the Sierpinski triangle in Figure 4. This triangle is an infinite number of triangles contained within the larger triangle. If the resolution is increased, you will see even more triangles. This self-similarity is an important characteristic of fractals (*Fractal Market Analysis*, 1994, p. 10).

The Sierpinski triangle is important because it demonstrates that a random process (the die roll and the starting point) coupled with global determinism (the triangle and the rules) can create a stable natural system with self-similarity. The model you have created through this game is a fractal: the position of the next point is dependent on the current point.

Predicting the actual sequence of points is impossible, but the odds of plotting each point are not equal. The empty spaces have a zero chance of being plotted while the edges of the triangles have a higher chance of occurring. Local randomness does not equal the probability of all possible solutions or equal independence. This example provides a basic understanding of Fractal versus Gaussian statistics. Read the section on the Chaos Game again if this is unclear. The underlying theory reappears later in this guide.

WHY CHAOS THEORY IS USEFUL

Chaos theory is a marvel to the modern day world because it offers a tool to analyze the dynamics of uncertainty and to locate order. This is the true science of the twenty-first century which accidentally began in the late twentieth century.

Although the origin of Chaos theory dates back to the work of Henri Poincare in the late nineteenth century, it proved impractical due to limits in number crunching. With advanced computer technology, researchers finally had the means to investigate this aspect of nature that permeates everything around us. We hear much talk today about Chaos and its application to economics, but we are really dealing with an enigma that influences our lives in all aspects of science, technology, and humanity.

Chaos is the study of turbulence. It presents challenges for us in long-term prediction. Because we are dealing with a nonlinear system, feedback is constantly introduced into and alters the same system.

This transformation continues indefinitely, each time creating a slightly different cycle. With the exponential growth of this system, a point will eventually be reached that appears completely random. This randomness is due in part to the fact that a small change in initial conditions is overlooked. The system continues with the feedback process generated from those initial conditions, and eventually seems out of control. This is why many researchers believe that long-term prediction is an impossible task.

Refer back to the bifurcation diagram or the Sierpinski triangle and you will see a graphic example of this. What does this mean to us from an economic point of view? It tells us that markets are not truly efficient, and possibly not predictable in the long run. Does this mean we can use Chaos theory to make us better traders? *Absolutely.*

To better understand how Chaos theory can be used in trading financial markets, we need an understanding of *attractors*. Attractor refers to a region where a systems solution lies. The attractors are point attractors, limit cycles, and strange or fractal attractors.

Point attractors are the simplest form of attractors and are often explained through the pendulum. If you swing a pendulum, it will move in the direction swung until friction slows it down. Eventually the pendulum will stop at one point as in Figure 5.

Now imagine that friction is eliminated somehow, and you swing the pendulum. The pendulum takes on a circular pattern and continues to revolve undisturbed indefinitely. This pendulum is now an example of a *limit cycle attractor*. The limit of the cycle is the

circle that the pendulum transverses see Figure 6.

Classic economics discusses systems in terms of point attractors or limit cycles. An easy way to understand this is to consider the equilibrium point in a standard supply/demand market as the point attractor: any periodic variation around the equilibrium point would be the market's limit cycle.

Finally, take the same pendulum and swing it with various degrees of strength. The energy of the pendulum will vary based on the strength of each swing. You will see that the position of the pendulum varies for each swing. So the pendulum will never complete a cycle and never duplicate an orbit. It appears to act randomly and chaotically, but falls within a certain range and always orbits clockwise. The pendulum is now acting as a chaotic or fractal attractor (Figure 7).

Chaotic attractors are fractal, and have individual fractal dimensions. The confined space or range that the chaotic attractor falls within is known as phase space. It doesn't matter what initial value is used for the pendulum swing, the phase space will remain the same. This area is analogous to the perimeter of the Sierpinski triangle.

The stock market is easily identified as a chaotic attractor when one considers the conditions that form one. The periodic input of energy could be any time frame: minutes, days, or weeks. The amount of energy is based on the level of buying and selling in each market. Each equity will have its own phase space and move in a non-periodic cycle. Each equity will also have an individual fractal dimension regardless of time frame.

When fractals are used to forecast a financial market, we must take into account degrees of iteration and time scales. The reason is that chaotic systems have a sensitive dependence on initial conditions. A simple example is an inflated balloon. Let it go and it flies all over the room. If you try to catch it, chances are you won't. It's a classic illustration of sensitive dependence on initial conditions. Minor changes in the release of the balloon amplify into radical changes in flight direction. But is it impossible to predict the flight of the balloon?

An attempt to solve the equations for the balloon would reveal that the flight path is nonlinear and almost unpredictable. But if you watched the balloon 1000 times you would detect a theory of its flight pattern. The theory would not be perfect, but it would allow you to catch the balloon much more than randomly. You would also catch the balloon more often if you reached for it early in its flight.

Small errors in initial forecasting will lead to large errors over extended periods. This is

why *our* forecasting will be limited to immediate time frames and a low number of scales. Limiting forecasts to the next immediate time period helps avoid errors caused by initial conditions. By applying the principles of Chaos theory to the markets in a way that capitalizes on current computing power, we can create a powerful forecasting tool.

THE APPLICATION OF CHAOS TO THE MARKETS

Now that you have a basic understanding of Chaos and Complexity theory, let's focus our attention on the practical application of the theory to the markets. To begin with, consider the concept of liquidity, volume, and time.

Liquidity is not the same as volume. There have been many instances of the market moving quickly in either direction when liquidity was low and volume is high.

Although the majority of economists disregard liquidity in equilibrium theory, it still is an essential ingredient in moving markets. Conventional economic wisdom professes the fair price of a security to be the meeting point of supply and demand. The fair price is the current price, otherwise it would not remain at the current price.

According to Efficient Market Hypothesis current prices reflect all public information. Therefore, one market participant cannot have an advantage over another. The exception to this rule is the trader with information unavailable to others. Even this concept has been questioned by economists who insist that private information is discounted as the players in the "know" begin to influence the price.

The error with efficient markets is making the assumption that efficient markets and stable markets are one and the same. Liquidity is necessary for a market to remain stable, and when it is stable, the fair price and actual price may very well be close to the same. Fortunately for us, the markets often slip away from a state of equilibrium when liquidity is low and volume is high. *These circumstances present trading opportunities.*

Market liquidity is created by different investors with different perceptions of fair price. This perception depends on the time frame the investor is trading within. A daily investor and a monthly investor do not normally view the price of a security in the same light. A daily investor might consider a sharp move down as a warning and attempt to sell, thus saving capital reserves for another trade.

The monthly investor could look at the same market and consider this a buying opportunity. The difference is that the monthly investor has a longer time range to consider. This is a great example of how value is perceived differently. Two investors are both looking at the same market, but because of the time frame, they have completely different perceptions of fair price. The different perceptions are important to maintain the market stability.

The market destabilizes when all time frames are in unison. This means that long, medium, and short-term investors are in agreement of market direction. In this case

volume will increase and liquidity will decrease. An example is when long-term investors lose faith in longer-term information because of an unpredictable event. The short and long-term investors act the same way, so no one can provide liquidity and bring the market back to stability.

Because volume and money flow are integral components of the market, Fractal Finance monitors them when creating an analysis. Although the market is a natural system, money is the underlying energy of this system and is consequently important to financial forecasts.

Think of the markets as a river. Imagine the water is the money in the market and the change in turbulent water levels is the natural system. As Fractal Finance users, we take full advantage of the energy measured in the markets.

Fractal Finance measures money flow through volume and daily price movement. The open and closing price of each bar in a bar chart is noted and compared against the high and low of the day. This is further measured against the volume of each price plot. A direction is established for the money flow and its strength is established.

By identifying the bar's high and low, we know the highest level the bulls could move the security before the bears overtake them and the price moves back down. This is also true in reverse. The opening and closing prices identify who is in control of the market in the beginning and who is in control at the end of the bar's time period. With this information the current direction of the market and money flow can be determined.

Another application for the bars and price data is to determine the immediate trend. Take the midpoint of the current bar and compare it to the previous bars. This method provides a quick estimate of the market trend.

By comparing the immediate trend with the direction of price and money flow, a good indicator is created for forecasting short-term price movement. Although this is not a fractal indicator, it works well with them. It can be used in unison with all of the other indicators in Fractal Finance to trigger a buy/sell Alert.

An important component of Fractal Finance are the Fractal *pivot points* included in the systems analysis. They comprise two types: the Fractal Interim Trend and the Fractal Set Trend. They are principally used to identify the points where a market trend is about to change directions or begin.

The Fractal Interim Trend is essentially the fractal of the Fractal Set Trend. It identifies

potential market movement with less data and is useful for small data sets.

The Fractal Set Trend uses more data to identify a market fractal and is oriented toward a longer range forecast. Over the last several years, Tetrahex has been studying market behavior and the application of Chaos theory to market forecasting. With the aid of computer modeling, Tetrahex was able to identify fractals or fractal characteristics that occurred before price direction changed.

What Tetrahex found is that two types of initiating fractals are consistent in almost all markets. Variations of these fractals are common, but they all have similarities. Using pattern recognition, Fractal Finance searches through the data in the chart and detects the common denominators of the fractal pivot points. Once the characteristics are verified, Fractal Finance notifies the user with an Alert, a Ribbon, and a Commentary Window.

It is not unusual for both fractal indicators to disagree. This may take place when the interim trend doesn't provide a clear signal or vice-versa. Usually the interim trend will signal a change first as it uses less data.

Tetrahex believes that you may find the Fractal Interim Trend useful as a sole indicator when the trading range is more volatile or choppy. In other words, if you prefer to trade a security in a tight range, the Fractal Interim Trend may help you get in and out before the price reverses. While we recommend using both trading indicators together, experimentation is also encouraged.

Another form of experimentation involves System Tests. It's easy to create a System Test that is based on only one fractal indicator or another. These are not included with the original 20 System Tests that come with Fractal Finance, but the easy-to-use mnemonics of Fractal Finance makes it simple. A further explanation will appear later.

THE FRACTAL DIMENSION INDEX

Another indicator that was first introduced in Version 3.0 is the *Fractal Dimension Index* or FDI. It allows you to truly experiment and trade on the cutting edge of Chaos and Fractal theory.

This specialized indicator identifies the Fractal Dimension of the market by using re-scaled range analysis and an estimated Hurst exponent (see the Glossary and the discussion in the next section). FDI uses all data displayed on the chart to determine the volatility or trendiness of a market.

FDI is the same type of tool used by Mandelbrot, Hurst, and Peters in their examination of time series analysis. With FDI you can determine the persistence or anti-persistence of any equity or commodity that you display in MetaStock®. Essentially, FDI will tell you whether a market is a random, independent system or a fractal dimension.

A persistent time series will result in a chart that is less jagged or closer to a line. An anti-persistent time series will result in a chart that is more jagged and subject to more reversals. This information is important when combined with the other Fractal Finance tools. Possible applications include new System Tests, Explorers, and Custom Indicators.

To better understand FDI, begin with its history. The history of FDI starts with a British damn builder and hydrologist H. E. Hurst (1900-1978). He worked on the Nile River Dam Project in the early 20th century. Hurst searched for patterns in the Nile delta in an attempt to solve a hydrology problem.

The problem involved the storage capacity of the damn reservoir. This is important to hydrologists because if the damn is too high, resources are wasted. If the damn is too low, it won't work. To solve this problem, Hurst considered the relationship between annual rainfall, the extremes of high/low water, and the reservoir's level.

Most hydrologists assumed that water inflow was a random process with no underlying order. Hurst, however, came to a very different conclusion after studying almost a millennium of Nile overflows. He found that large overflows tend to be followed by more large overflows. There appeared to be cycles, but their lengths were non-periodic. Standard statistical analysis revealed no patterns between observations.

So, Hurst then developed his own analytical method. To identify a non-random process, he tested the Nile using Einstein's work on *Brownian motion*. Brownian motion is a widely accepted model for a *random walk* (see the Glossary). Einstein found that the

distance a random particle travels increases with the square root of the time used to measure it. This is called the *T to the one-half rule* and is commonly used in finance and economics.

Hurst divided the Nile data into segments and examined the logarithmic range and scale of each segment in comparison to the number of total segments. This process is called *re-scaled range analysis*. It's re-scaled because it has a zero mean and is expressed in terms of local standard deviation.

The re-scaled range value scales with an increase in the time increment, by a power-law value equal to H . H is referred to as the Hurst exponent. Using re-scaled range analysis, Hurst showed that the water overflows tended to repeat, meaning that the natural overflows were partially predictable.

Mandelbrot used the Hurst exponent to experiment with time series found in nature, including cotton prices. Through his experiments, Mandelbrot developed a method to measure irregular natural objects. He named this measurement the *Fractal Dimension*. FDI is based on the work of Mandelbrot and Hurst.

FDI has many applications and is a valuable tool for experimenting with fractals and investment strategies. FDI may be inserted above a chart and used to identify the fractal dimension of the market.

If the indicator is close to two, the market is highly fractal with more jagged edges and reversals. If FDI is close to one, the market is closer to a line with less volatility. Bear in mind that FDI is determining the amount of dimension a market has. Two indicates a plane and one indicates a straight line. One and one-half indicates a random walk, meaning that the market is unpredictable. It's a product of the law of Brownian motion. You may want to avoid this market.

In the Commentary Window of Fractal Finance, you will find FDI near the end of the other indicators. You will see two different FDI indicators. The first FDI is calculated with logarithmic returns. Because logarithmic returns sum to cumulative returns, most analysts agree that this is more appropriate for financial analysis.

The second FDI is calculated with closing price data. Experimenters may wish to compare the two FDI over various time frames and securities when using them to create new trading systems.

When experimenting with FDI, remember that a Hurst estimate is used. This may

produce strange results if not enough data is included. How much data is enough is speculative at best and is still debated among chaoticians and analysts. Feder believes any data with less than 2,500 observations is questionable.

Another postulate is the length of time necessary for each data period (periodicity). Some researchers believe that smaller time periods such as daily data are subject to more noise from random information. If this is the case, FDI is less accurate with finer slices of sequential data. The individual length of each period will come into play as noise is filtered.

Tetrahex has found that our System Tests are often improved with the use of FDI regardless of time frame. Included with Fractal Finance 3.0 are 10 System Tests that use the *logarithmic returns* FDI. These are the original System Tests with optimized FDI included. The results of the original System Tests often improve dramatically with the inclusion of FDI. You should experiment with FDI and System Tests whenever possible.

Another application of FDI is the Explorer feature. A new column at the end of the *Tetrahex - Strength Explorer* identifies the logarithmic returns FDI. This will help you identify new investment opportunities by finding securities with a higher or lower fractal dimension.

The fractal dimension is helpful because it determines the amount of market volatility. The easiest way to use this indicator is to understand that a value of 1.5 suggests that the market is acting in a completely random fashion. As the market deviates from 1.5, the opportunity for profit earning is increased in proportion to the amount of deviation.

The entire scale is based on a range of one to two suggesting extreme linearity to extreme volatility. An example of this scale is its use in geography. If you examine an island and plot the fractal dimension, you will be able to determine how jagged the edges of the island are for a particular measurement scale. An island with a 1.7 fractal dimension is highly jagged with many peaks and troughs on the periphery. An island with a fractal dimension of 1.3 is much more linear, approaching a single dimension or a straight line. If you examine this island on a map, the coastline will be straighter.

Applying FDI to the market is similar to studying an island on a map. The price plot is analogous to the periphery of the island. The FDI indicator then determines how close the price plot is to two dimensions (a plane) or one dimension (a line).

Because the price plot will never be one extreme or the other, we need to measure the "fraction" of the dimension. This is why we call the FDI number a fractal dimension.

The further away this dimension is from 1.5, the more confident we can be that the market is not random.

When a market is not random it is more predictable. The best direction for trading is still a matter of debate, but with a highly sensitive tool like Fractal Finance, an FDI closer to two may provide substantial opportunities because of the high volatility and changes in market movement. An FDI closer to one signals a trending market that is moving in one direction. To alleviate any confusion, the new Fractal Finance System Tests use an optimized FDI to determine the best number for trading a particular market.

Another indicator under the Fractal Dimension Index heading: the V-Statistic. This ratio demonstrates a clear peak when re-scale range statistics stop scaling at a faster rate than the square root of time. When the V-Statistic peaks, it is often caused by a non-periodic or periodic cycle.

With FDI and V-Statistic, you now may experiment on the cutting edge of Fractal Analysis and Chaos Theory. If you just want to apply FDI as easily as possible to your trading strategies, simply follow the above directions and use the included tools. System Tests 11-20 have been configured with FDI already in place.

THE FRACTAL FINANCE MACD AND RHYTHM INDICATOR

Fractal Finance also includes a specialized Moving Average Convergence Divergence (MACD, see the Glossary). Tetrahex created this MACD with a unique oscillator and signal line. MACD is not a fractal indicator, but we find it useful for a number of reasons.

The primary application of MACD is as a leading indicator of momentum. Recall the earlier discussion of money flow: momentum is the amount of energy or money entering a market in a certain time period. Identifying this momentum in advance is a precursor to a good trade. MACD will identify where changes in the immediate momentum are occurring before it is obvious to you or competing traders.

MACD is also a useful tool for *Elliot wave counters*. The Elliot wave is interesting for those studying fractal market analysis because it shares certain similarities with the fractal.

One similarity is *iteration*. Iteration is the tendency of an object to repeat itself in a self-similar manner. Elliot waves do this because when making counts, one Elliot wave is used to find the end of a count in a higher Elliot wave as shown in Figure 8. This scaling principle is the second similarity that Elliot waves have with fractals.

Another property of Elliot waves is that they all tend to have a fractal dimension that lies within a specific range. This consistency allows us to draw parallels between various markets to which the Elliot wave is applied.

The problem many Ellioticians have is keeping an accurate count. This is where the MACD comes into play. When estimating a wave three in a count, look for an increasing MACD signal. Fractal Finance identifies an increasing MACD with a green dot. At the end of a wave three count the market will hypothetically move toward a wave four. This will also be accompanied with a change in momentum. Then we will look for the MACD to turn bearish (see Figure 9). You don't need to understand Elliot waves to use Fractal Finance. The example is included to show you how MACD can be used with a number of different trading tools. Soon you will see how we use it in conjunction with fractals and the other money flow indicators.

Fractal Finance measures the natural rhythm of the market by comparing the current market direction to its medium and long-term directions. Because the market is a natural system, we want to be sure that our trades do not buck the trend. To do this we look at the Rhythm Indicator on the Fractal Finance chart. The indicator is symbolized by the color of the price bar.

A red bar indicates a declining trend as the short-term price movement relates to the medium and long-terms. A blue bar indicates a neutral trend (or no trend) as the short-term relates to the medium and long-terms. A green bar indicates an increasing trend as the short-term relates to the medium and long-terms.

When this Rhythm Indicator is in agreement with MACD, you know that new money is flowing into a market that has maintained constant money flow for some time. This is strong evidence that the current trend will continue.

When changes start to take place between MACD and the market rhythm, it is important to examine the fractal pivot points and look for potential shifts in market direction. While you can use your own judgment, Fractal Finance will signal Alerts when these conditions begin to develop. These Alerts erase the ambiguity from buy/sell decisions.

IDENTIFYING MARKETS WITH TRADING POTENTIAL

Part of using a trading system or tool is selecting a market that is ripe with opportunity. There are many ways to approach this, but the most effective are those that monitor price movement, volatility, and volume. They are effective because market makers and specialists act repeatedly in similar ways to reflect changes in supply and demand. If we can find securities likely to have strength, we can then apply fractal analysis to determine if the market is good to trade.

Because Fractal Finance users don't use other technical indicators, they don't even need to consider them. The only indicators Tetrahex believes you should be familiar with are relative strength and trends. One way to search for strength is to identify strong groups of securities and compare them with a measure of the market.

An example is to take an index of securities that represent one segment of the market and compare it with your measurement device. If you are interested in technology stocks, you could take the CBOE technology index and compare the strength of it to the NASDAQ. If the CBOE technology index has moved up a higher percentage than the NASDAQ, you know that the CBOE index is outperforming the NASDAQ.

In this case the CBOE technology index is a good place to search for technology securities to trade. After all, a security will not make money if it doesn't move or have follow-through. This practice of comparing the two indices is known as relative strength.

Relative strength is not limited to comparing an index to the broader market. You can use this technique just as easily with an individual security and an index of a sector. In the above example the CBOE technology index was compared with the NASDAQ, but you could just as easily have compared one stock in that index with the index itself or the broader market in general.

This may sound confusing, but it really isn't. If, for instance, MSFT was trading at 50 and is now trading at 55, MSFT is up 10%. If during the same time period the NASDAQ was at 2000 and is now 2100, we know that the NASDAQ is only up 5%. By this reasoning, MSFT is twice as strong as the broader market. This translates to good strength. Considering that MSFT is moving and there is active interest in it, now would be a good time to run a fractal analysis of MSFT and look for a buy signal.

When searching for a good trading candidate, consider volume in addition to relative strength. If volume is higher than normal and relative strength is also high, demand is usually increasing.

Tetrahex has identified this market phenomenon and has determined certain of its characteristics. Stocks trading two to four times average volume and up (down) five to ten percent will continue to go up (down) and follow-through. However, beware of stocks moving at abnormally fast rates. These equities tend to attract attention in the news and correspondingly attract supply that makes the equity vulnerable to pullbacks. To give you an idea, stocks trading up 25% on 20 times average volume are inherently risky.

To make your trading experience pleasurable, Tetrahex added a tool to Fractal Finance 3.0 that allows you to find potential trades quickly. The tool is a filtered Explorer called "*TETRAHEX - Strength*" with FDI. Its purpose is not to forecast relative strength or direction, but to identify securities with the potential to move in either a positive or negative direction.

We identify potential opportunities by searching for securities that have moved between five to 25% and with a 50-day moving average of volume that lies between 50 to 2000%. Changing the values in the Explorer filter easily modifies these formulas.

Another column in the Strength Explorer contains the logarithmic FDI of price change. In conjunction with the other two indicators, it allows you to determine how close the security is to a random walk.

If the FDI is near 1.5, the security is in a highly difficult range to forecast price movement. We suggest first searching for securities with strong relative strength and average volume, and then finding those with an FDI as far away from 1.5 as possible.

Once you identify a security matching those criteria, pull up a chart and run the Fractal Finance Expert. Within seconds you will know if there is a buy or sell signal for the security. For a more in-depth analysis, run the System Tests to determine the best trading style for that particular market.

Another option when searching for trading vehicles is the Fractal Finance Explorer in conjunction with the TETRAHEX - Strength Explorer. If you use the Fractal Finance Explorer with Strength, first identify potential movers with Strength, and then see if they have a buy/sell signal in the Fractal Finance Explorer. Once you identify the security with a buy/sell signal, analyze its chart using Fractal Finance.

When entering trades, remember to determine when the buy/sell signal was first initiated. The reason is that you want to enter a trade at the beginning of a buy/sell signal to gain

the most potential profit. If, however, you wish to see a trend form before entering a trade, you can see how well you would have done by modifying the System Tests. All you must do is adjust the delay time in the options menu. You can set the periods ahead of the buy/sell trigger to whatever amount you find reasonable. This should satisfy your curiosity.

PUTTING IT ALL TOGETHER

Now that you have a good grounding in fractals, chaos, and Fractal Finance, let's put the program to work. Begin by identifying a security with volatility and volume. Simply use the Explorers described earlier.

After you have found a number of securities, look at each one on an individual chart.

Attach the Fractal Finance Expert and look for any buy/sell signals. Many Alerts are included with Fractal Finance, so be sure to read each one carefully. After identifying a security with a buy/sell signal, look at the commentary for more specific information. Determine how far into the Alert the security is trading and decide on your trading style.

You should decide if you want to enter a trade from the first buy/sell signal or after a trend is forming. Remember, buying into the trade may seem safer, but the potential for maximum profits will be reduced. When a trade is obvious to many people, it is a reason. So if all of the indicators in Fractal Finance are at or near the highest mark, and a strong buy signal has existed for several periods, chances are that many other traders are already on board.

To decide what type of trading strategy to employ, use the System Tests to run a comparison. Set your delay period for whatever periods you feel comfortable with and see how you would have fared in the market.

If you choose to trade directly from the System Tests, remember that they will vary depending on the amount of price data loaded and the time frame analyzed. Tetrahex suggests that you use the System Tests as a tool for selecting the markets with the most potential, not as a trading system itself.

The next step is to look at a chart of the next higher time frame and compare MACD and Fractal indicators of both charts. You will make a safer trade if you enter only when the MACD of the higher time frame is the same as your trading time frame.

The fractal indicator of the higher time frame is also important. It is acceptable to enter a trade when the higher time frame is showing a buy fractal signal with a buy MACD and the lower time frame is showing a neutral signal for both the fractal signal and the MACD.

What is probably occurring in this case is a change in sentiment from the lower time frame that has not taken effect with the longer-term money. One way to execute this

type of a trade is to watch both time frames closely and as soon as the fractals in the higher time frame correlate with the lower time frame you initiate the trade. Again, you may not catch the bottom of the new trend, but you will be entering a safer trade.

Fractal Finance has an extensive help menu that explains all available indicators and tests. Indeed, all of the information you need to begin trading Fractal Finance is in the Help Menu. Below we have included a brief description of the various indicators and trading styles for easy reading.

Using Fractal Finance - Overview

Fractal Finance is easy to operate and read. For an accurate analysis, Fractal Finance requires a minimum of 40 periods loaded into your chart. Once the expert is attached to a chart, several indicators will appear.

The "Ribbon" on the bottom of the chart shows Fractal Trends Combined. This is a composite indicator of two Fractal Indicators. One Fractal Indicator is designed to spot new trends while the other monitors fractals in the current trend or trading range. The current condition of the market is expressed by the color of the bar at the bottom of the chart. The color green is bullish, blue is neutral, and red is bearish.

The price plot reflects Rhythm and is one of three colors, each signifying the current motion of the market. A green bar is bullish, blue is neutral, and red is bearish.

Above each price plot is an indicator for a special **MACD** that is designed to work in conjunction with the fractal data. The **MACD** has only two directions and is either bullish (green dot) or bearish (red dot).

Fractal Finance also uses eight Alerts. When MACD and the fractals are in the same direction, a buy or sell Alert is produced. When all three indicators are in the same direction, a strong buy or sell Alert is produced.

We recommend you not respond to the fractal signal if it contradicts MACD. Conditions of this nature are best left for observation. In addition to these four Alerts, others are given when the you should be neutral or when a new trend is forming.

Look now at the **Commentary Window.** The top shows open, high, low, close and volume data. The next section describes chart signals (MACD and Rhythm), and adds Fractal Set Trend, Fractal Interim Trend, and Fractal Trends Combined.

The Fractal Consensus summarizes MACD, Rhythm, Fractal Set Trend, and Fractal Interim Trend on a scale of 4 to -4. The number 4 is strongly bullish while -4 is strongly

bearish. Any numbers between the two are variations of either effect. This is useful for knowing when a trade may be reversing. As an example, a person may execute a trade if the Fractal Interim indicator is bullish and the composite is 2. In a choppy market this may suggest a breakout to the upside.

Important features of the Commentary Window are the two **Stop-Loss Indicators**, Bullish Support, and Bearish Resistance. Fractal Finance is designed to use a stop-loss and this should not be ignored. The stop-loss number changes per price plot, so it should be placed at the time of the trade.

Both the bullish and bearish stop-loss numbers are shown at all times. They are displayed for traders who wish to track potential breakouts in either direction.

The next indicator is a Trend Indicator that informs you of a potential new or ending trend. It's clearly displayed at the bottom of the commentary.

The last commentary indicators are the **FDI, FDI price and V-statistic**. FDI is the Fractional Dimension Index that determines if a market is volatile, random or trending. The first FDI is based on logarithmic change in price while the second is based on closing price. The V-statistic is an indicator that peaks at the end of a non-periodic or periodic cycle.

A description of the commentary indicators and what they represent follows. The range of values for each indicator is listed in brackets. For example, the first indicator is MACD, and the only possible values it will generate are bullish or bearish.

COMMENTARY WINDOW DEFINED

Fractal Finance 3.0 allows you to fully edit the Expert. You can create your own Trends (Ribbon), Highlights, Symbols, and Alerts. Also, the Commentary Window can be fully customized using standard Metastock editing features. If you refer to the commentary, you will find these indicators:

MACD [Bullish, Bearish] - Moving average convergence/divergence. MACD primarily identifies the current momentum of the market. Our proprietary indicator is set to specific values that offer an early indication of a potential change in market direction. This is not a Fractal Indicator, but works well in conjunction with them. Fractal Finance does not signal a buy/sell Alert unless MACD agrees with Fractal Trends Combined. MACD is visible on the Fractal Finance chart as a green (bullish) or red (bearish) dot above the price plot.

Rhythm [Bullish, Neutral, Bearish] - Filter that compares market momentum over the long, medium, and short-term. Rhythm is represented on the Fractal Finance chart by turning the price plot green (bullish), blue (neutral), or red (bearish). This signal is the current disposition of the market in comparison to long and medium-term. It's useful in identifying current trends.

Fractal Set Trend [Bullish, Neutral, Bearish] - Based on a combination of formulas that search for a fractal in a current time frame. When a fractal is found, a projection is made based on this information. Depending on the type of fractal identified, Fractal Set Trend will show a bullish, bearish, or neutral signal.

Fractal Interim Trend [Bullish, Neutral, Bearish] - In-depth analysis of a fractal used to verify the validity of the Fractal Set Trend. Fractal Finance generates a fractal within the Fractal Set Trend and compares the results. If the Fractal Interim Trend is in agreement with the Fractal Set Trend, the potential of a new trend forming in that direction is high. Because the Fractal Interim Trend is created inside of a shorter time frame, it's possible that the Fractal Set Trend and Interim Trend will not agree. In this case the market is probably caught inside of a tight trading range and the Interim Trend will be more accurate. Users who trade a tight range market may prefer to use the Fractal Interim Trend and not the Fractal Set Trend.

Fractal Trends Combined [Extremely Bullish to Extremely Bearish] - Aggregate of Fractal Set Trend and Fractal Interim Trend. It appears in the Window as a range between Extremely Bullish to Extremely Bearish. The Ribbon at the bottom of the Fractal Finance chart also represents this indicator, but only as Bullish (green), Neutral

(blue), or Bearish (red). When it is neutral, the two Fractal Trend Indicators may disagree and you may want to stay out of the market. Tetrahex does not recommend entering a trade unless Fractal Trends Combined is in agreement with MACD.

Fractal Consensus {4 to -4} - The final answer. After comparing MACD, Rhythm, Fractal Set Trend, and Fractal Interim Trend, the Fractal Consensus assigns a value from 4 to -4. This range represents extremely bullish to extremely bearish. Tetrahex believes this calculation offers the most accurate forecast.

Bullish Support - Level of support determined from Fractal Set Trend and Fractal Interim Trend. If the price of the security falls below this level, watch for a reversal. This helps avoid false starts should the fractal be erroneously formulated.

Bearish Resistance - Level of resistance is determined from Fractal Set Trend and Fractal Interim Trend. If the price of the security rises above this level, watch for a reversal. This helps avoid false starts should the fractal be erroneously formulated.

NOTE: You may prefer to use the Support and Resistance Indicators as complimentary buy/sell signals. One example is to only enter new trades that fall within a 20% range of the support or resistance level (depending on whether you are bullish or bearish).

Trend Indicator - A proprietary VHF indicator that can be used in conjunction with the other indicators. The Trend Indicator is added primarily to help Fractal Finance investors find securities that have a stronger chance of trending. For example, an investor using the Fractal Finance Explorer may choose to only buy securities that have a strong buy and beginning trend Alert.

Fractal Dimension Index - Identifies the Fractal Dimension of the market by using re-scaled range analysis and an estimated Hurst exponent. This specialized feature (FDI) is new with Fractal Finance 3.0. FDI uses all data displayed on the chart to determine the volatility or trendiness of a market. FDI tells whether a market is a random, independent system or a fractal dimension. A persistent time series will result in a chart that is less jagged or closer to a line. An anti-persistent time series will result in a chart that is more jagged and subject to more reversals. This is important in combination with the other tools in Fractal Finance. Applications include new System Tests, Explorers, and Custom Indicators.

V-Statistic - This ratio demonstrates a clear peak when re-scale range statistics stop scaling at a faster rate than the square root of time. When the V-statistic peaks, it is often caused by a non-periodic or periodic cycle.

INDICATORS IN FRACTAL FINANCE 3.0

All of the indicators needed to create your own System Tests, Alerts, Explorers, etc., have been defined, with easy mnemonics. The values in parentheses are part of the indicator name, and are a quick reference to the possible values. The mnemonic method used is a preface of Q ("quick"), plus the initials of the indicator. Thus, Fractal Consensus becomes qfc. This method was employed to take advantage of Metastock's ability to recognize an indicator as long there is a unique character string in the name. The FF 3.0 quick indicators are:

TFF Fractal Consensus **QFC** (+4 to -4)
TFF Fractal Interim Trend **QFIT** (1, 0, -1)
TFF Fractal Set Trend **QFST** (1, 0, -1)
TFF Fractal Trends Combined **QFT** (+2 to -2)
TFF MACD Fractal Buy **QMFB** (true,false)
TFF MACD Fractal Sell **QMFS** (true,false)
TFF Macd **QMAC** (1,-1)
TFF Neutral from Long **QNFL** (true,false)
TFF Neutral from Short **QNFS** (true,false)
TFF Rhythm **QR** (1, 0, -1)
TFF Strong Buy **QSB** (true,false)
TFF Strong Sell **QSS** (true,false)
TFF Trend Begin **QTB** (1,0)
TFF Trend End **QTE** (1,0)

For example, to create a System Test using strong buys only, the syntax `Fml("TFF Strong Buy QSB (true,false)")` is the same as `Fml("TFF Strong Buy QSB")` which is the same as `Fml("qsb")`

All of the System Tests included with Fractal Finance 3.0 can be examined and used as examples for syntax and values. We are confident you will find these formulas and mnemonics useful, and welcome your suggestions / comments.

Anti-persistence A term used in re-scaled range analysis. An anti-persistent time series is reflected on a chart as a more jagged line. The fractal dimension of such a chart is closer to 2. If a market is highly anti-persistent, it is more likely that the price direction will change in the next time period.

Attractor The region where a systems solutions exists.

Bifurcation This is the point in a nonlinear system when the possible solutions double. The point where this occurs is the critical level. The transition from order to chaos occurs when the number of possible solutions begins doubling.

Chaos The particular state of a nonlinear dynamic system when it is unpredictable. This state appears to be random. A chaotic system has a fractal dimension and is sensitive to initial conditions.

Complexity theory When a large set of independent variables spontaneously organize themselves into a natural system.

Euclidean geometry The symmetrical form of mathematics developed by Euclid. He insisted that geometry could explain reality.

Fractal An object with self-similar individual parts.

Fractal Dimension A non-integer dimension that describes how an object takes up space.

Hurst exponent An indicator developed by H.E. Hurst to measure the bias in fractional Brownian motion. The Hurst exponent varies between 0 and 1.

Limit cycle A nonlinear attractor that has periodic cycles or orbits in phase space.

Liquidity The ability to buy or sell a security in a particular market. Not to be confused with the volume of a security.

MACD A Moving Average Convergence Divergence is calculated by subtracting a long term moving average from a medium term moving average. A short term moving average is plotted against the other two and used as a signal line. The MACD is primarily used to identify the current momentum of the market.

Nonlinear dynamic system A system in which randomness, initial conditions, and stimuli become the organizing principle rather than cause and effect.

Persistence A term used in re-scaled range analysis. A persistent time series is reflected on a chart as a straighter line. The fractal dimension of such a chart is closer to 1. If a market is highly persistent, it is more likely that the price direction will not change and continue to trend in the next time period.

Point attractors The simplest form of attractors, often explained with the example of a pendulum. If you take a pendulum and swing it, it will move in the direction swung until friction slows it down.

Random walk Explained in terms of Brownian motion as a change in the value of a variable that is unrelated to any past or future event.

Re-scaled Range (R/S) Analysis Developed by H.E. Hurst to determine long memory effects and fractional Brownian motion.

Strange attractor An attractor whose points complete a cycle in phase space and never duplicate an orbit. The orbits appear to be random and chaotic, but fall within a certain range of phase space. Strange attractors are non-periodic.

Sierpinski triangle A graphic example that demonstrates a random process coupled with global determinism can create a stable natural system with self-similarity.

V-Statistic A re-scale range plot that often peaks when a periodic or non-periodic cycle is complete.

BIFURCATION DIAGRAM

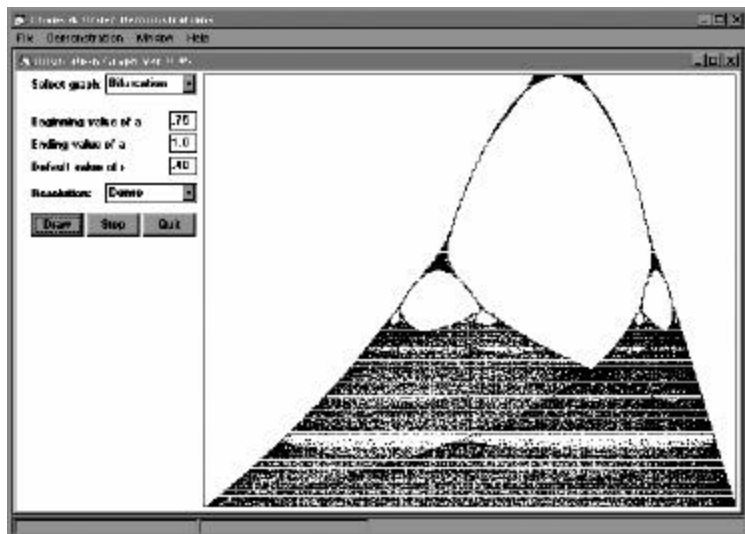


Figure 1

THE CHAOS GAME

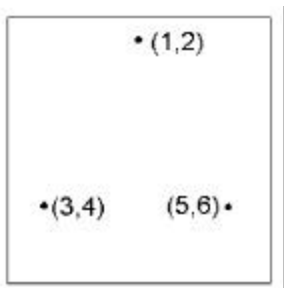


Figure 2

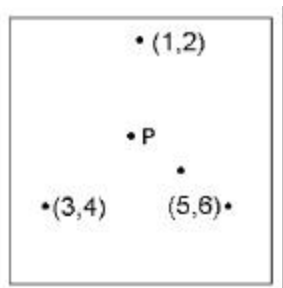


Figure 3



Figure 4

ATTRACTORS

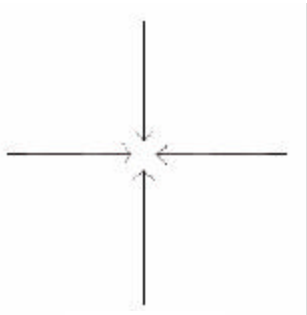


Figure 5

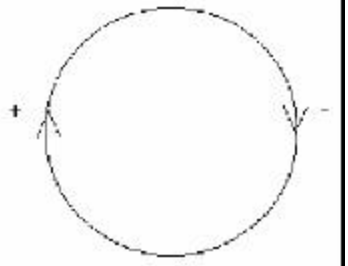


Figure 6

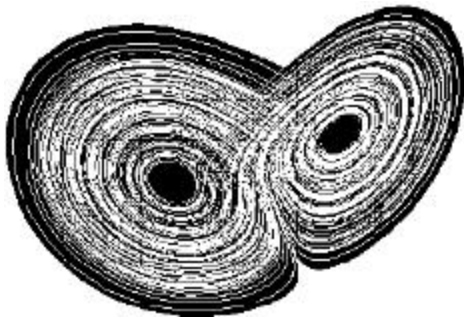


Figure 7

SUBDIVIDING ELLIOT WAVE

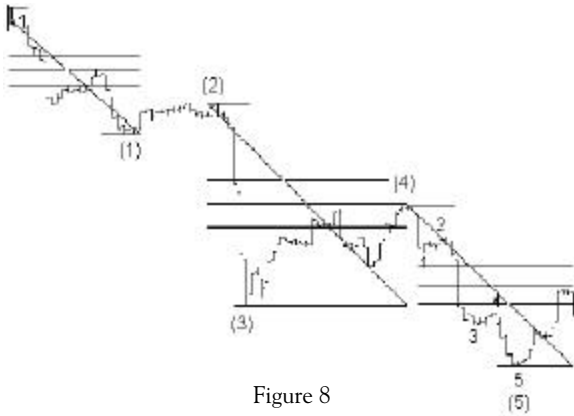


Figure 8

FRACTAL FINANCE CHART W/BEARISH MACD

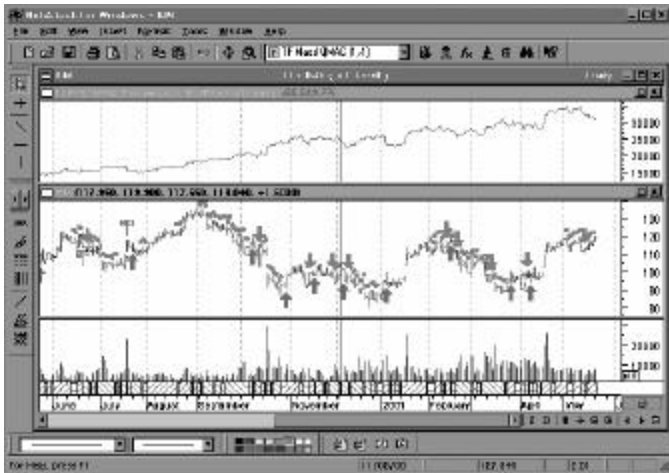


Figure 9