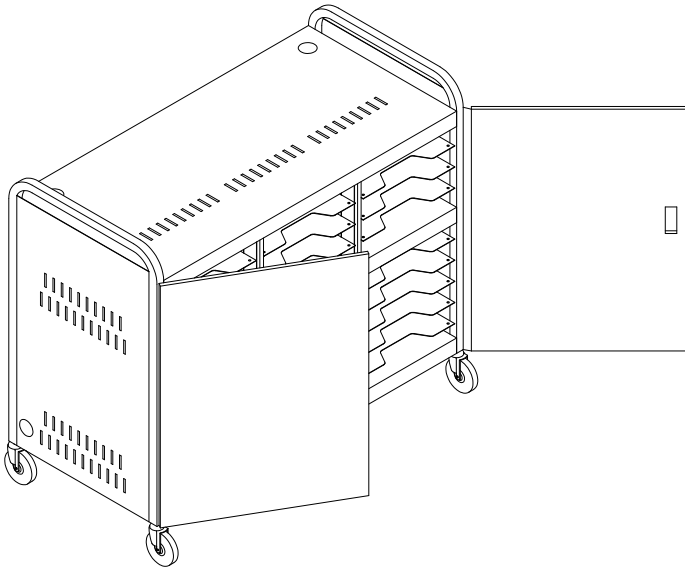


# Computer Table Laptop Storage Cart CT-LS30

Form E-396  
Rev. 9/10



**Caution!** The user of this product should exercise caution when moving the cart. Any sudden stop could cause instability of the cart and could cause serious injury and/or damage. The cart should always be pushed, never pulled, by the user. Always push from the side of the cart, never from the front or back of the cart.

## Required Tools

- 3/8" end wrench
- Phillips screwdriver
- Flat screwdriver
- 1/2" end wrench

## Procedure

1. Remove contents from carton and examine.

ITEM	DESCRIPTION	QTY
1	LATCH, LEVER	1
2	DIVIDER	24
3	CART ASSEMBLY	1
4	DOOR, LEFT HAND W/ HINGE	1
5	DOOR, RIGHT HAND W/ HINGE	1
6	CASTER, PLATE 5" W/B	2
7	CASTER, PLATE 5"	2
	PACKAGE SET	1
A	GROMMET, 2"	8
B	NUT, HEX 10-24 KEPS	6
C	SCREW, HHCS 5/16"-18 X 3/4"	16
D	SCREW, MACH 10-24 X 1-1/2" TR	6
E	SCREW, BHSCS 1/4"-20 X 1/2"	4
F	WRENCH, ALLEN 5/32"	1

- Lay cart onto rear panel. See Figure 1. Install Plate Casters. For maximum braking capacity, the two brake casters should be installed diagonally across from each other. Tighten all fasteners.

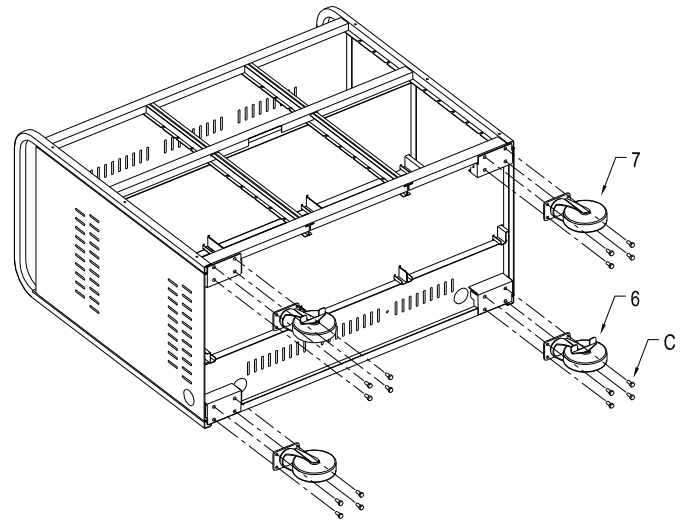


Figure 1

- Position cart upright. See Figure 2. Secure both doors to cart. Use the slots in the doors to adjust the position. Tighten all fasteners.

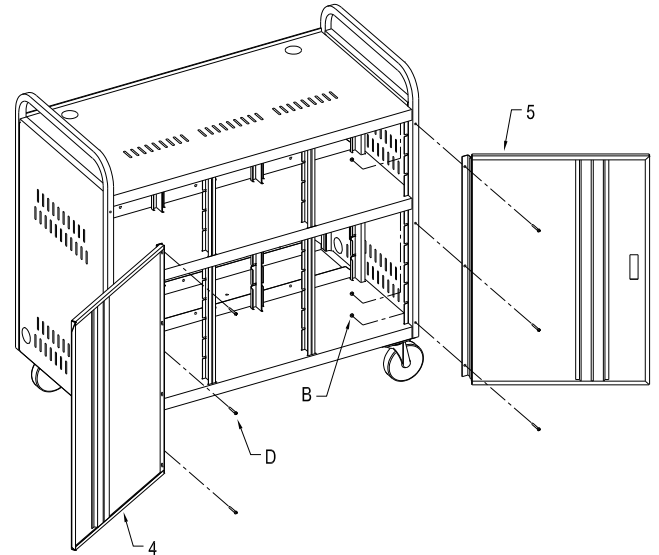


Figure 2

- Install Lever Latch. See Figures 3 and 4. Do not force the Lever Latch closed. Doing so may break Lever Latch. Assemble the Lever Latch beginning with the 1/4" dimension shown and increase length until Latch holds Doors securely.
- To disengage lock, insert and turn key 1/4 turn to the right. To open latch, push inward on chrome keypad.

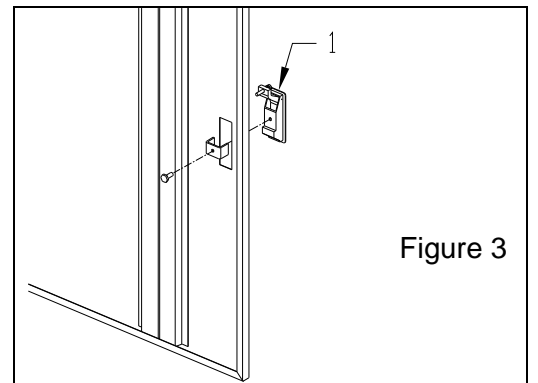


Figure 3

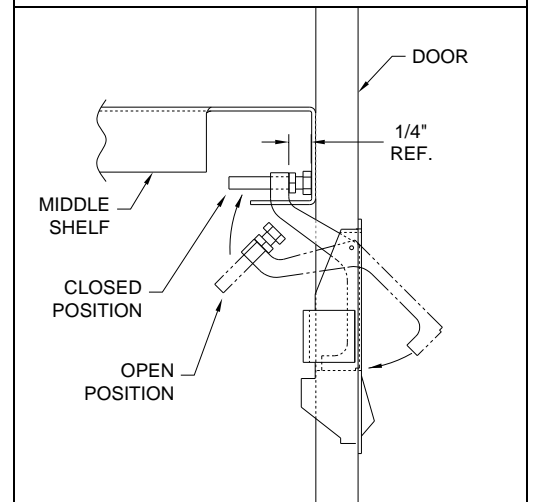
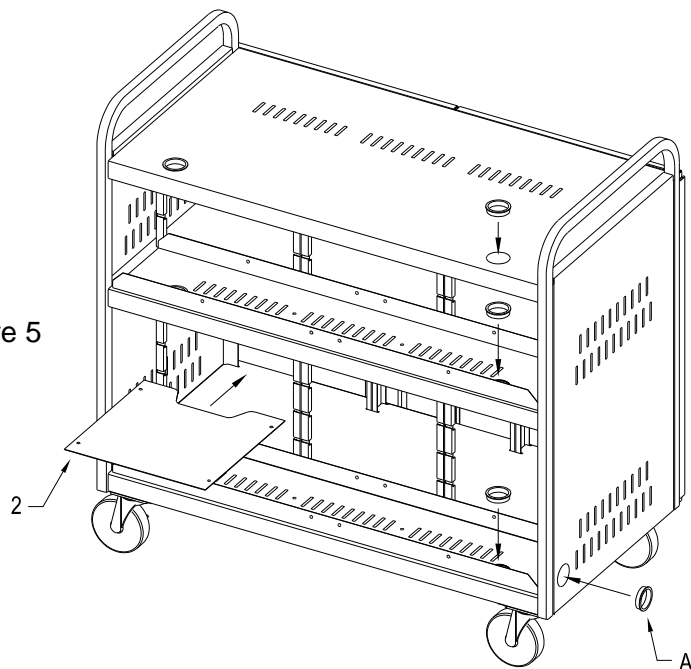


Figure 4

- Remove rear panel by turning the fasteners 1/4 turn in either direction. Install the dividers as needed. See Figure 5. Install grommets. Reattach rear panel by rotating fasteners 1/4 turn, aligning with nut and pushing into position.

Figure 5



- For theft deterrence, use the Screws shown in addition to the 1/4 turn fasteners. See Figure 6.

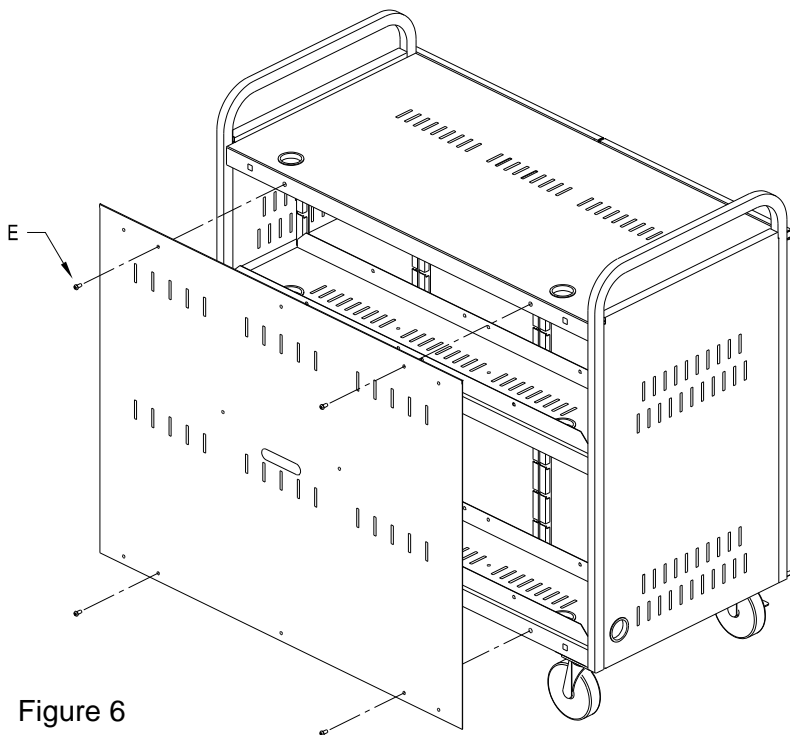


Figure 6

**DA-LITE SCREEN COMPANY, INC.**  
3100 North Detroit Street  
Post Office Box 137  
Warsaw, IN 46581-0137  
phone: 574/267-8101  
800-622-3737  
fax: 574/267-7804  
<http://www.da-lite.com>  
e-mail: [info@da-lite.com](mailto:info@da-lite.com)