

## Model 775

Hard Drive Data Recovery Suite

The model 775 is a brand new data recovery product. It is a full 360 degree solution made by data recovery professionals to address common needs that are not being fulfilled by current data recovery software or hardware products.

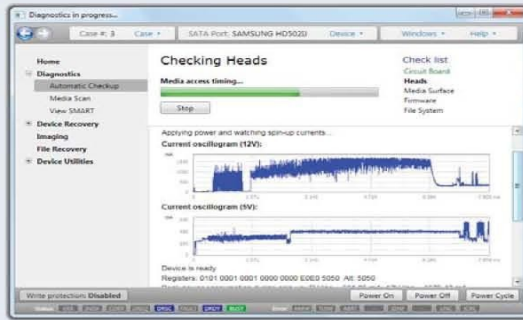


### Manages All 4 Stages of Data Recovery

- 1 Hard Drive Diagnosis
- 2 Firmware Repair and Recovery
- 3 Hard Drive Imaging / Duplication
- 4 File Recovery & Extraction



## DIAGNOSTIC FUNCTIONS



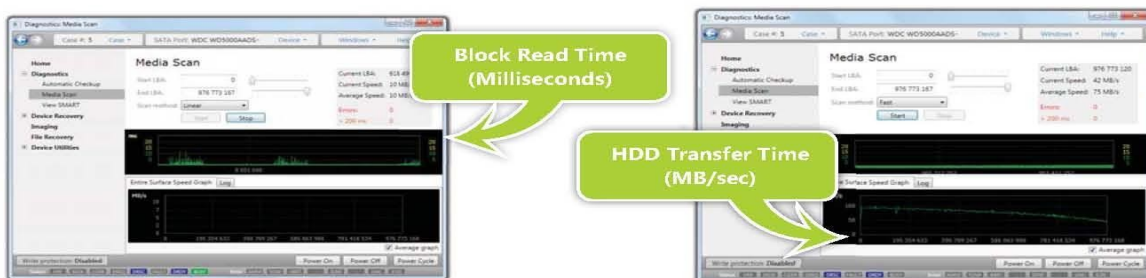
- ▶ Fully automatic disk checkup
- ▶ Media scan
- ▶ S.M.A.R.T. Operations
- ▶ Firmware Area (System Area) Checkup
- ▶ Partitions and File Systems Checkup
- ▶ Head Checkup
- ▶ PCB Checkup
- ▶ **Automatic Reporting System For All Diagnostic Functions**

### Fully Automated Diagnosis

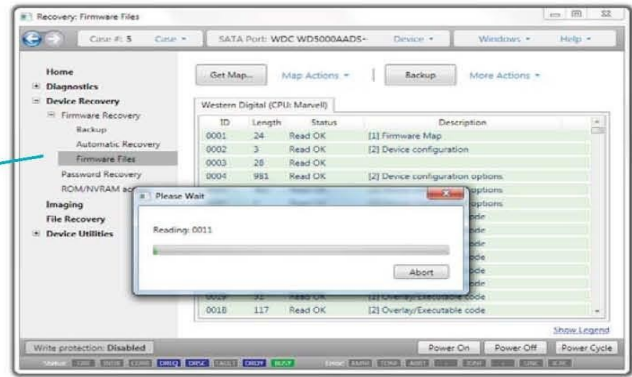
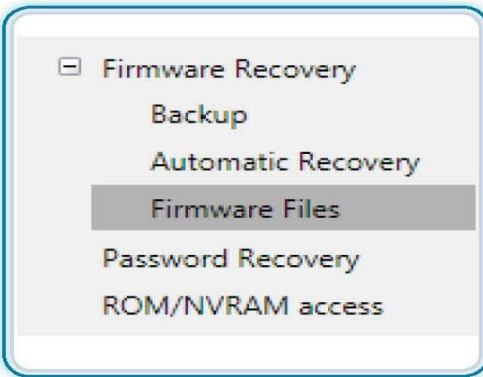
The model 775 automatically diagnoses all components of a hard drive and reports specific problems to the operator along with recommendations for completing data recovery. It also automatically repairs HDD firmware and identifies/removes ATA passwords (User or Master setting at any security level). All automatic functions can be performed manually according to the operators preference.

### Media Scan

Media Scan reveals errors such as read delays (bad sectors). Two graphs are created displaying HDD Transfer Speed and Block Read Time. This function identifies surface and head damage on the hard drive.



## FIRMWARE RECOVERY



- ▶ Firmware Backup
- ▶ Firmware Editing
- ▶ Firmware Restoration
- ▶ Automatic Firmware Recovery
- ▶ Translation Table Recovery
- ▶ Universal Firmware Archive

### Fully Automated Diagnosis

Automatically assesses firmware issues and repairs/recovers most common types of firmware damage. Backup and Restore functions can be executed with just one click of a button.

### Firmware Backup & Restore

The model 775 takes the pain out of backing up firmware modules by allowing the user to save all firmware modules and ROM/EEPROM/NVRAM images. This reliable and convenient feature is achieved with just two clicks of a mouse.

### Firmware Editing Capability

Full access to ROM, EEPROM/NVRAM Firmware modules is implemented for the seasoned recovery professional. Read, write, modify and erase any firmware module or structure and switch a hard drive's internal flags and features.

**supports all firmware formats including PC300, Salvation Data and HRT**

## CASE MANAGEMENT

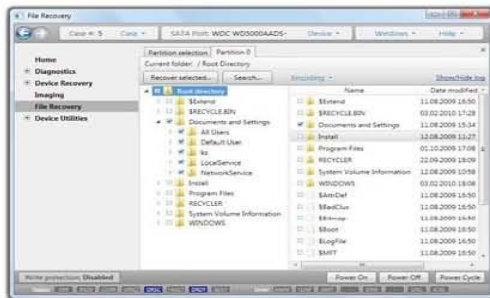
The model 775 is the world's only data recovery solution with embedded SQL software for reliable case management. Full operation logs are automatically stored for every hard drive providing a manageable case record for every job, every time.

## HDD DUPLICATION

The model 775 Disk Duplication function enables the user to create precise copies of hard drives with plenty of options for flexibility in various data recovery applications.

- ▶ Duplication using multiple passes
- ▶ Duplication by specified heads
- ▶ "Data only" copy option
- ▶ Stop/resume anytime support
- ▶ Checksum calculation
- ▶ Lot's of advanced settings

## FILE RECOVERY (FAT16, FAT32, NTFS, EXT2, EXT3, EXT4, HFS, HFS+)



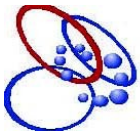
The model 775 File Recovery Engine extracts files from badly damaged hard drives, even in cases where all partitions are lost. It does this by scanning a hard drive's entire platter area to identify possible system file structures (such as MFT) and then recovering the original file and folder structures. Operation automatically applies identification methods such as file signature scanning.

## PASSWORD RECOVERY



Identify and/or Remove unknown passwords regardless of setting (Master or User) or security level (High or Maximum).

Operation is fast, easy and automatic. Brute Force and Dictionary Attack are available when needed.



## DISK UTILITIES



- ▶ Device Configuration
- ▶ Host Protected Area
- ▶ Security Features
- ▶ Media Recovery
- ▶ Create Bad Sectors
- ▶ Disk Editor
- ▶ Device Configuration
- ▶ Current Monitor (Oscilloscope)



### Media Recovery

Extract data from damaged or unstable sectors to maximize recovered data.

### Disk Editor

Allows the user to view or modify any hard drive sector.

### DCO & HPA

Set, remove and adjust DCO and HPA settings for full hard drive access and control.

### Current Monitor

The data collected by the current monitor is used for automatic hard drive diagnostics (to detect frozen motor, damaged electronics, etc). 5V and 12V currents are monitored separately.

The model 775 includes an oscilloscope that allows the operator to watch hard drive power consumption levels. There are two kinds of oscilloscope in Atola Insight: full-size monitor and tiny monitor. Tiny monitor can always stay on the screen allowing to always keep an eye on hard drive's power consumption, whereas full size monitor provides more details.



## DISKSENSE

The model 775 DiskSense is a USB hardware unit that maximizes the speed, flexibility and potential of the Atola Insight suite. It offers the following features...

### Mobility

Can be used on any computer equipped with a USB port, allowing the user to perform on-site diagnosis or recovery. Standard 5/12v Molex DC connector is included to power the unit via PC power supply.

### UDMA Data Transfer

Enhances model 775's functions by enabling the hard drive to run in UDMA transfer mode. Save time by increasing transfer speed.

### Case Management

Embedded SQL software provides simple and reliable case management for all jobs.

### Current Monitor

Protects the connected hard drive from short-circuits in conjunction with the Insight's Current Monitor/Oscilloscope. It also enhances the Insight's HDD diagnostic capabilities. 5v and 12v currents are monitored separately.

### Power Control

Provides full control over HDD power. It allows the user to terminate HDD power by pushing two buttons or instantly abort an operation entirely if necessary.

### RS232-C Port

Equipped with an on-board RS232C (com) port for specialized tasks including accessing Seagate hard drives.

