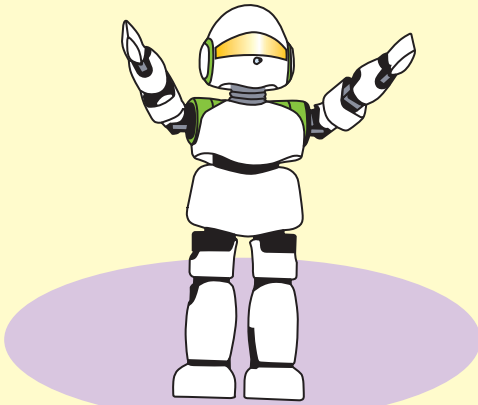


PINO

how i work!



PINO

introducing PINO!!!

Say hello to your smart robotic friend. He's so cool, you'll never want to put him down! The more you interact with PINO, the more he does. PINO lost his memory after his spaceship crashed to earth. Now he's alone and needs your care and attention. Look after PINO and be rewarded with fun and friendship as his personality grows.

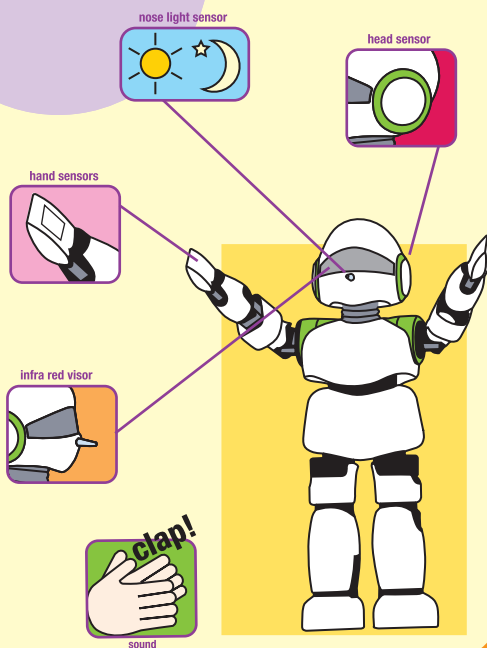
PINO loves to play games and the more you interact with PINO, the more he learns. PINO will learn to walk, dance, sing and responds to sound and your voice. PINO has realistic emotions: he can be happy, sad, angry or sleepy. Leave your bedroom and PINO will guard your room from any unwanted intruders! Put two PINO's together and watch them talk and interact with each other.

contents:

1. my sensors
2. my age
3. PINO's emotions
4. playing with PINO
5. PINO's together
6. switching off PINO - sleeping
7. resetting PINO
8. troubleshooting
9. battery cautions and warnings

1. my sensors...

PINO



2. my age...

PINO

As you interact with PINO he advances through 3 stages of growth, starting at level 1 and progressing through to level 3 – PINO will sing Happy Birthday when he advances to the next level.

age 1

Take care of PINO by using the sensors in...

