

# New Features for the PLUS C-12 Series CaptureBoards

## Enhanced Security

To accommodate customers who desire to keep proprietary information from being accessed when the board is used in a common room or shared space, new security features have been added:

- A password to lock and prevent access to the board's settings.
- A setting to block access to the board's internal data from a PC.
- A setting to disable the use of a USB memory stick.
- A setting to disable the ability to print from the internal memory.
- The **Erase Reminder** feature, which reminds the user to erase any writing & drawing which may have been inadvertently left on the scrolled surface of the board.

## PDF, JPG and PNG Support

PDF and JPG formats have been added to the previously supported PNG format. Now users have more options for the easy handling of image files for the purpose of printing, saving to a USB memory stick and saving to a PC.

## Header/Footer Function

This feature automatically adds company logos and identifiers to the printed or saved documents. Doing so helps keep meeting records organized and extends the utility of the documents.

## Integrated "PLUS TOOLBOX" software

All of the settings and operations of the board can be easily accessed when using a connected PC. Simple "Plug&Play" recognition of the board means that the PLUS TOOLBOX menu automatically pops up on the PC screen when the PC and board are connected via a USB cable. This is an improvement from the previous software which required the settings to be adjusted model by model.

## Color Laser Printer Compatible

In addition to being compatible with a number of InkJet printers, the C-12 Series can now be used with the magicolor 1600W and 1680MF from Konica Minolta. The compact size, high performance and low color printing cost of the magicolor 1600W and 1680MF make either of these laser printers a perfect match for your PLUS C-12 CaptureBoard.

## Enhanced Screen Surface

While maintaining the aspects of a projection screen, improvements have been made to the board's writing/erasing performance.



# PLUS

Models  
**C-12S**  
**C-12W**

A new tool for dynamic meetings and presentations.

# CaptureBoard™



**NEW** C-12 Series

- Improved Screen Surface
- Enhanced Security Features
- Added PDF Support
- Erase Reminder Function

Specifications		C-12S	C-12W
BOARD	Board Surface Panel	W 51.2 x H 36.2 inches (1300 x 920 mm)	W 70.9 x H 36.2 inches (1800 x 920 mm)
	Effective Reading Area	W 50.4 x H 35.4 inches (1280 x 900 mm)	W 70.1 x H 35.4 inches (1780 x 900 mm)
	Number of Pages	2	
	Sheet Driving Method	Motorized	
	Grid Lines	-	
	Writing Instruments	Dry Erase CaptureBoard Markers (Black/Red/Blue/Green)	
	Reading Method	CCD Optical Sensor (RGB LED)	
	USB Port	3 Ports Lower Part of Board: A-Type 1Port (for Printer), B-Type 1Port (for PC) Control Panel: A-Type 1Port (for USB Flash Memory)	
PRINTER <sup>1</sup>	Compatible Printers	InkJet Printers: HP PCL3e Compatible (with some exceptions), Lexmark Z2300 Color Laser Printers: Konica Minolta magicolor 1600W & magicolor 1680MF	
	Paper	Letter-size (8.5 x 11 inches) Plain Paper / A4-size(210 x 297 mm)	
	Colors	Color or Black & White	
	Print Density	300 dpi	
	Interface	USB1.1or USB2.0 Full-speed Mode <sup>2</sup>	
EXTERNAL MEMORY	Type	USB Flash Memory <sup>3</sup>	
	File Format	PNG, JPEG and PDF Format	
PC CONNECTIVITY	Interface	USB1.1or USB2.0 Full-speed Mode <sup>2</sup>	
	File Format	PNG, JPEG and PDF Format	
	Supported OS	Microsoft Windows 2000 Professional (Service Pack 4 or Later) / Windows XP (Home Edition/Professional Edition Service Pack 2 or Later) / Windows Vist (32bit)	
OPERATING CONDITIONS	Temperature	50 - 95 °F, 10 - 35 °C (Operation)	
	Humidity	30 - 85% (No condensation)	
POWER SUPPLY	Power Source	AC Power 100-240 V, 50-60 Hz	
	Power Consumption	5W or less (Standby), 5W(Power-on), 40W(Operation)	
DIMENSIONS	Outer Dimensions with Stand <sup>4</sup> (Max.)	W 57.9xD 27.6xH 77.6 inches W 1470 x D 700 x H 1970 mm	W 77.6 x D 27.6 x H 77.6 inches W 1970 x D 700 x H 1970 mm
	WEIGHT	90.4 lb / 41 kg	99.2 lb / 45 kg
INSTALLATION	Stand / Wall-Mount		
ACCESSORIES	Markers (Black, Red, Blue, Green), Eraser, AC Power Adaptor, USB Cable (3 m Length), User's Manual, Assembly Set-up Manual, Quick Guide, CD-ROM (TWAIN Driver, User's Manual (PDF), PLUS TOOLBOX Software), Printer Table, Wall Mounting Brackets.		

<sup>1</sup>. Printer is not included. Check with your dealer or the PLUS website ([www.plus-america.com](http://www.plus-america.com)) for current compatible printers. <sup>2</sup>. Not correspond to USB 2.0 high-speed. <sup>3</sup>. USB Flash Memory Stick is not included. <sup>4</sup>. The height is adjustable to 66.7, 73.6 and 77.6 inches (1770, 1870, 1970 mm).

[ Capture the projected image and your hand-written notes as a single digital file. ]

## CaptureBoard Accessories

Maintain the quality of your screen by using PLUS accessories

Using non-PLUS products may stain the screen.



- Printer  
code: BF-M10-Printer
- Stand  
code: 44-067
- Eraser  
code: 44-369
- Board Markers  
code: 44-572 Black  
code: 44-573 Red  
code: 44-574 Blue  
code: 44-575 Green

**PLUS Vision Corp. of America**  
9610 SW SUNSHINE CT.  
SUITE 500  
BEAVERTON, OR 97005  
800-211-9001 • 503-748-8700  
[www.plus-america.com](http://www.plus-america.com)

# PROJECT • WRITE • CAPTURE

Product Designs  
Financial Spreadsheets  
Architectural Plans  
Business Charts  
Education Lessons  
and more...

Notes  
Corrections  
Captions  
Annotations  
Additions  
and more...

Save as a digital file.  
[Keep an exact record of the presentation.]  
[Share with meeting attendees.]  
[Distribute in an email.]  
[Print in color.]  
and more...

# CaptureBoard™

Ideal for meetings in which a projected image is discussed.

## A better meeting experience.

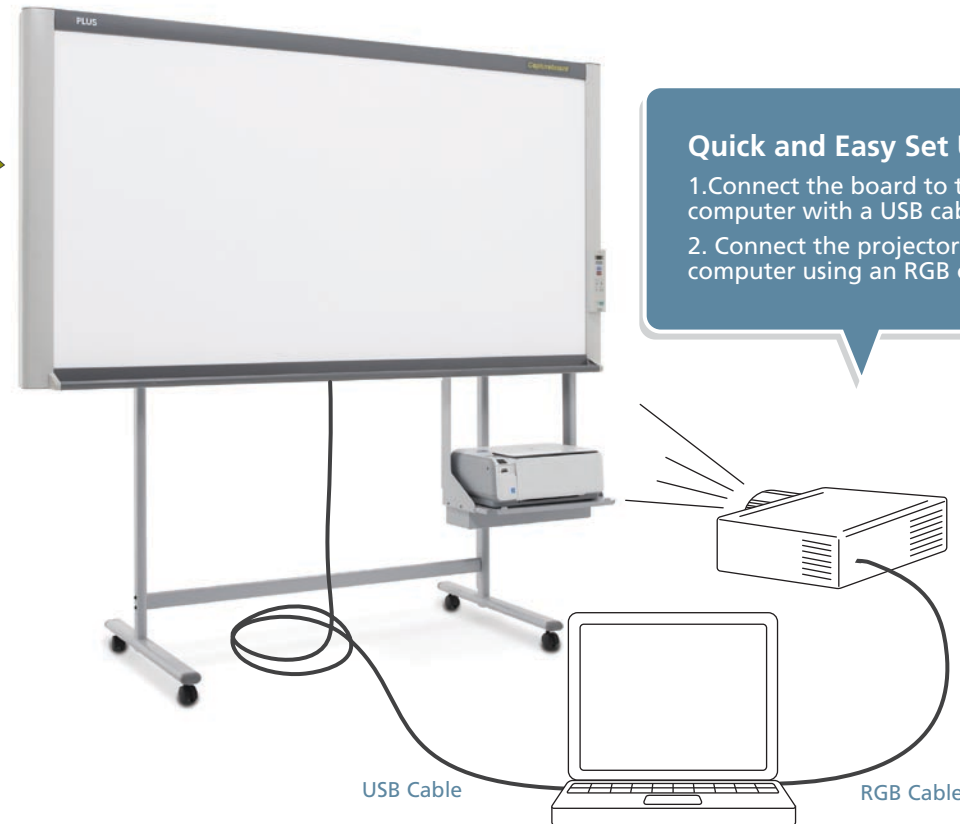
The PLUS CaptureBoard allows your meetings to be more dynamic, creative and productive. Meeting attendees can contribute ideas and provide input by adding their comments to the "writable" screen of the board. Combine and save all of the notes and comments along with the original projected image to your computer. Exact copies of the meeting notes can be easily stored or distributed as printed copies or via email.

### Project & Write

The CaptureBoard's unique screen surface possesses the properties of both a projection screen and a dry-erase board.

Project an image of up to 60 inches. Use the supplied color markers to write directly on both the projected image and in the blank spaces on the board.

The matte surface allows for sharp projected images with minimal reflection or glare.



### Quick and Easy Set Up

1. Connect the board to the computer with a USB cable.
2. Connect the projector to the computer using an RGB cable.

### Capture & Save

The easy-to-use CaptureBoard software allows you to combine and save the projected image with the hand-written notes into a single digital file on your computer.

The simple four-button menu is intuitive and learning the software requires little training.

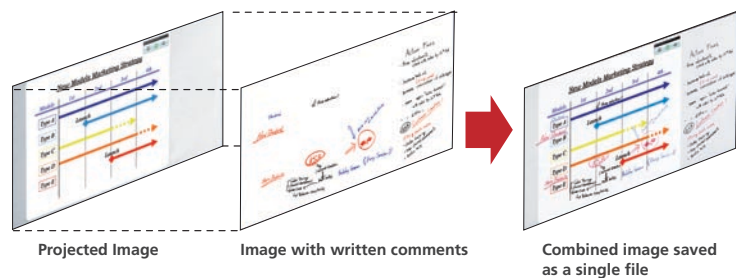
The combined image can be saved as a JPG, PNG or PDF file which can be easily printed in color, attached to an email or incorporated into office documents.



#### Software Menu

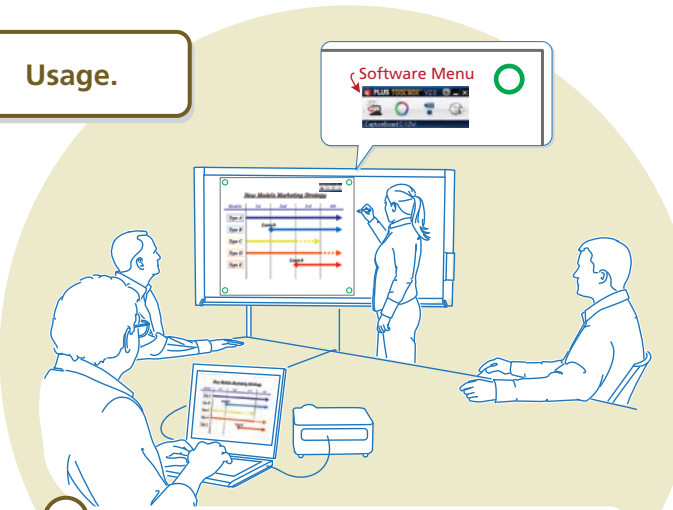
- Scan Board
- Select Corner Mark Color
- Scroll Sheet
- Board Settings

### Software Overlay Method



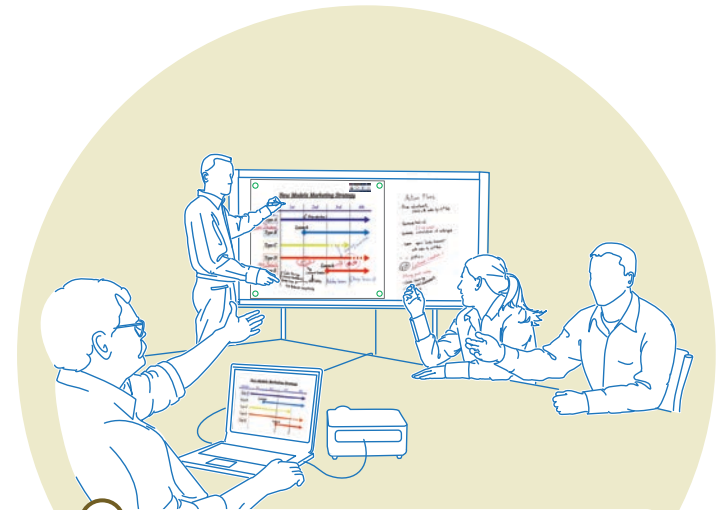
Save as JPEG, PNG, or PDF

### Usage.



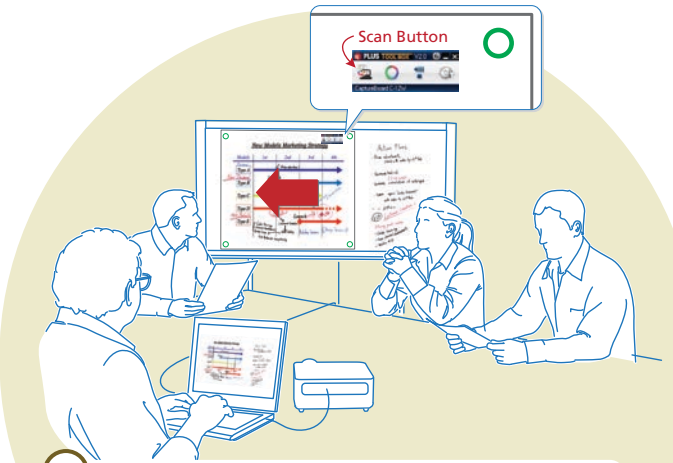
#### 1 Begin your meetings quickly.

Start up the CaptureBoard software to bring up the main menu at the top right of the projected image. Four small circles appear in the corners of the image. Trace each circle with one of the supplied markers. The circles aid the software with proper alignment.



#### 2 Have a lively and dynamic discussion.

Using the supplied markers, write anywhere on the screen, including over the projected image. Everyone can contribute, resulting in a lively and productive meeting.



#### 3 Combine and save the image and notes.

To save your work press the Scan Button. The screen will scroll to the left to scan the written comments and then send them to your computer. On your PC, the CaptureBoard software overlays the written comments with the projected image. The file can then be saved and printed. You can be confident knowing that everyone possesses exact copies of the presentation.



#### 4 Modify and share the saved information.

It is easy to distribute the meeting notes to co-workers since everything is saved as a digital image file.

**For example:**  
Send revised design plans to the production department; insert the meeting notes into office documents; or, simply email the day's work to anyone who was absent from the meeting.

### Copyboard Functionality

When not used with a projected image, the CaptureBoard can be used as a copyboard.

**Push Button Operation for printing your notes to paper or saving your work digitally. Surpasses the functionality of a chalkboard or whiteboard.**

#### USB Memory Stick Port

Push a button to save the hand-written notes to a USB memory stick without ever connecting to a computer. Note: Images projected on the screen cannot be saved using this method.

#### On-Board Printer (Optional)

A USB port and a printer tray allow for the connection of a color printer.\* With a connected printer, print the hand-written notes directly from the board. Note: images projected on the screen can not be printed using this method.

\*See the Specifications and check with your dealer for current compatible printers.

Write  
Print  
Save



C-12 Control Panel