

DI-003-47000-01A

## FEATURES

- Upgrades the Leviton Residential Intercom System for use with Door Chime (Chime not included)
- Easy snap installation onto SMC mounting bracket
- Configurable set time delay

## PACKAGE CONTENTS

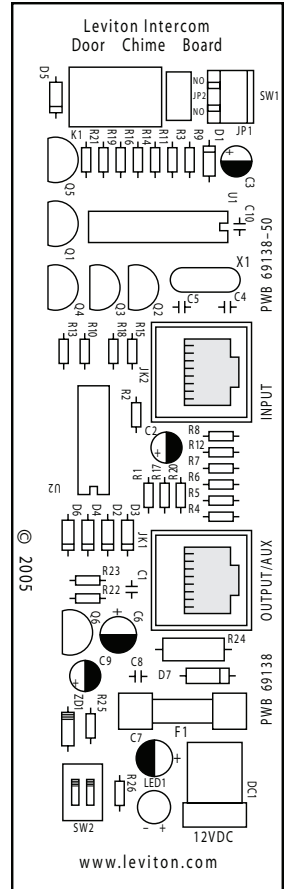
- Chime Board
- 12V Power Supply
- 12" Patch Cord (1)

## INSTALLATION

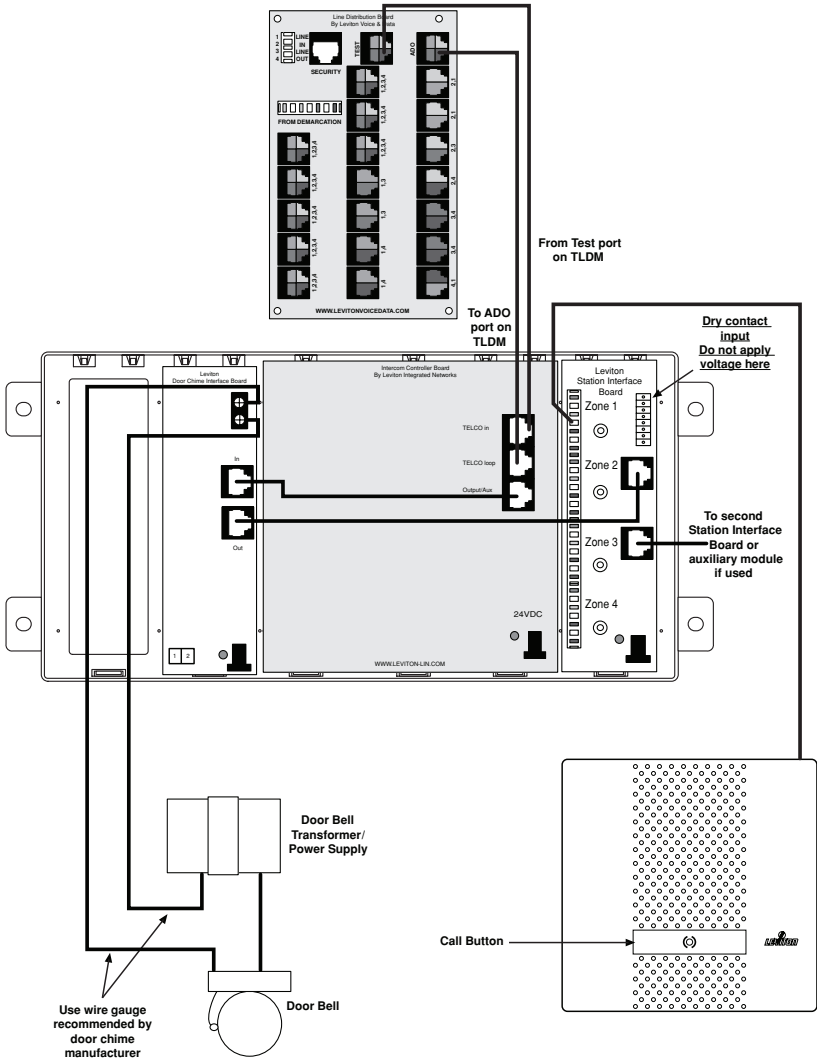
1. Mount the Door Chime board onto an available spot of the SMC mounting bracket.
2. Connect wires from door chime transformer and chime set to terminals at the top of the board. A chime will sound when any zone is activated.
3. This module can be used for various devices; the contacts are rated for 1 Amp at 125VAC/30VDC.
4. Set the jumper for normally open (NO) or normally closed (NC) contacts as desired. If being used to activate a door chime, set to the "normally open" position.
5. Use the patch cord to connect the output of the Intercom Main Controller board to the input of the Door Chime board.
6. Use a second patch cord to connect to the output/aux of the door chime board to the input of the Intercom Interface board.
7. Set the dip switches according to the table for the desired relay activation time.

**NOTE:** The LED will blink to indicate normal operation.

**NOTE:** Refer to Wiring Diagram on back page for wiring configuration.



# WIRING DIAGRAM

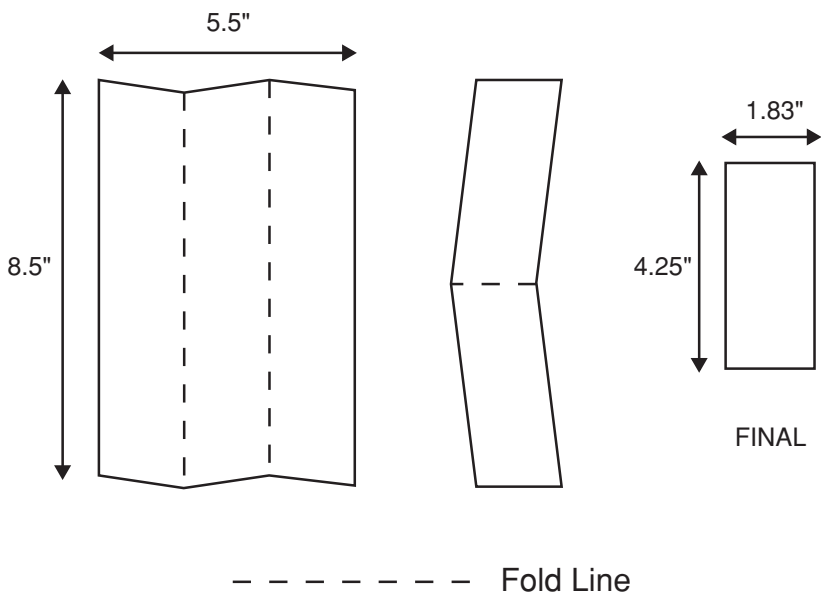


- For technical assistance contact us at **1-800-824-3005**
- Visit our website at **www.leviton.com**

## LIMITED 2 YEAR WARRANTY AND EXCLUSIONS

Leviton warrants to the original consumer purchaser and not for the benefit of anyone else that this product at the time of its sale by Leviton is free of defects in materials and workmanship under normal and proper use for two years from the purchase date. Leviton's only obligation is to correct such defects by repair or replacement, at its option, if within such two year period the product is returned prepaid, with proof of purchase date, and a description of the problem to **Leviton Manufacturing Co., Inc., Att: Quality Assurance Department, 59-25 Little Neck Parkway, Little Neck, New York 11362-2591**. This warranty excludes and there is disclaimed liability for labor for removal of this product or reinstallation. This warranty is void if this product is installed improperly or in an improper environment, overloaded, misused, opened, abused, or altered in any manner, or is not used under normal operating conditions or not in accordance with any labels or instructions. **There are no other or implied warranties of any kind, including merchantability and fitness for a particular purpose**, but if any implied warranty is required by the applicable jurisdiction, the duration of any such implied warranty, including merchantability and fitness for a particular purpose, is limited to two years. **Leviton is not liable for incidental, indirect, special, or consequential damages, including without limitation, damage to, or loss of use of, any equipment, lost sales or profits or delay or failure to perform this warranty obligation.** The remedies provided herein are the exclusive remedies under this warranty, whether based on contract, tort or otherwise.

## FOLD SCHEME



### LEVITON INSTRUCTION SHEET/MANUAL SPECIFICATIONS

- Artwork No/Rev Level: DI-003-47000-01A
- Color(s): Black over
  1. \_\_\_\_\_
  2. \_\_\_\_\_
  3. \_\_\_\_\_
  4. \_\_\_\_\_
- Font Families: Helvetica
- Material  
Type: 50 Lb. offset
- Coating:  \_\_\_\_\_
- Paper size:  
**Overall size:** 8.5" X 5.5"  
**Final fold size:** 4.25" X 1.83"

### DOCUMENTATION

- ECO No.: N/A
- Artist: H2D Date: 11/14/06

The information in this document is the exclusive PROPRIETARY property of LEVITON MANUFACTURING COMPANY, INC. It is disclosed with the understanding that acceptance or review by the recipient constitutes an undertaking by the recipient, (1) to hold this information in strict confidence, and (2) not to disclose, duplicate, copy, modify, or use the information for any purpose other than that for which disclosed.

Copyright © 1997 Leviton Mfg. Co. Inc.  
Unpublished, All Rights Reserved