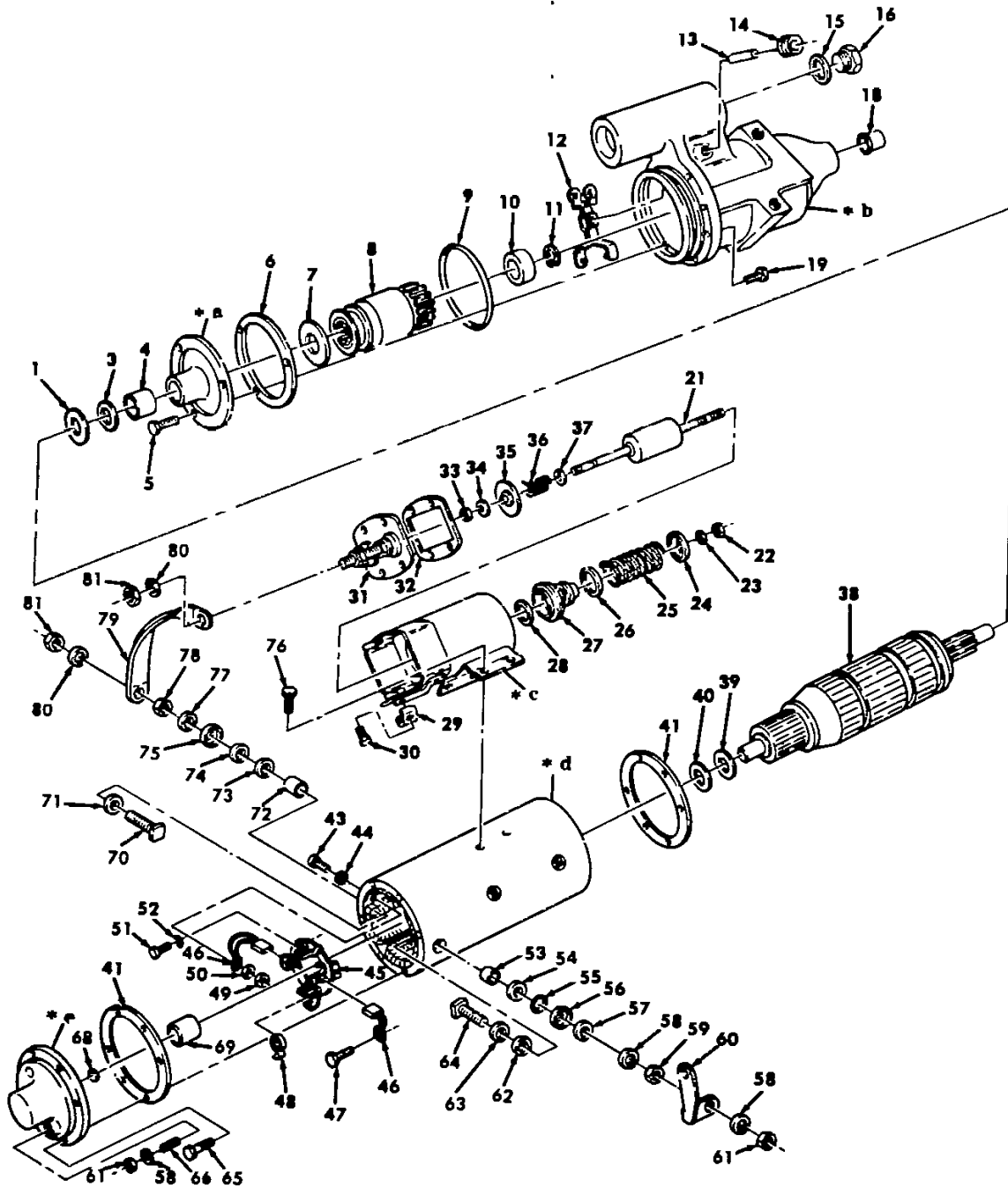


Section II.

TM 9-2320-280-24P-1

2—	3 thru 5	17—	18	20—	21 thru 37	42—	43 thru 52	67—	68 and 69
----	----------------	-----	----	-----	------------------	-----	------------------	-----	-----------------



- * a PART OF ITEM 2
- * b PART OF ITEM 17
- * c PART OF ITEM 20
- * d PART OF ITEM 42
- * e PART OF ITEM 67

Figure 39. Starter Motor Assembly.

SECTION II		TM9-2320-280-24P-1			
(1)	(2)	(3)	(4)	(5)	(6)
ITEM NO	SMR CODE	CAGEC	PART NUMBER	DESCRIPTION AND USABLE ON CODES(UOC)	QTY
GROUP 0603 STARTING MOTOR					
FIG. 39 STARTER MOTOR ASSEMBLY					
1	KFFZZ	19728	ML-129	WASHER,FLAT .31 THICK PART OF KIT P/N 90-2840	1
2	PAFFF	68505	MFY-1130	PLATE ASSEMBLY,STAR.....	1
3	PAFZZ	68505	XA-1642	•SEAL.....	1
4	PAFZZ	96906	MS17795-128	•BEARING,SLEEVE.....	1
5	KFFZZ	19728	13X-5549	•SCREW,FILL HEAD PART OF KIT P/N 90-2838	3
6	KFFZZ	19728	MFY-25	GASKET INTERMEDIATE PART OF KIT P/N 36-1165.....	1
7	KFFZZ	19728	MFY-133	SPACER 0.108 THICK PART OF KIT P/N 90-2840.....	1
8	PAFZZ	68505	DRA-3002D	DRIVE,ENGINE,ELECTR.....	1
9	PAFZZ	19728	XA-744Z	PACKING,PREFORMED 4-7/16.....	1
10	KFFZZ	19728	MFY-53	PINION STOP STARTER PART OF KIT P/N 90-2841.....	1
11	KFFZZ	19728	MCS-47A	SNAP RING STARTER PART OF KIT P/N 90-2841.....	1
12	PAFZZ	68505	MEU-2042B	SHIFTER FORK.....	1
13	KFFZZ	19728	MES-117A	PIN STRAIGHT PART OF KIT P/N 90-2206.....	2
14	KFFZZ	19728	20X-4222	PLUG YOKE ADJUSTING PART OF KIT P/N 90-2206	1
15	KFFZZ	19728	MFY-63	GASKET PLUS PART OF KIT P/N 90-2206.....	1
16	KFFZZ	19728	MES-61	PLUG YOKE ADJUSTING PART OF KIT P/N 90-2206	1
17	PAFFF	68505	PS-1475SS	HOUSING,PINION,STAR	1
18	PAFZZ	68505	MEL50	•BEARING,SLEEVE.....	1
19	KFFZZ	19728	8X-4678	SCREW HEX HD PART OF KIT P/N 90-2836.....	7
20	PAFFF	68505	SAT4108UT	SOLENOID,ELECTRICAL.....	1
21	PAFZZ	66505	SAV-1008A	•CORE ASSEMBLY,SOLEN	1
22	KFFZZ	19728	8X-1681	•NUT PART OF KIT P/N 90-2206	1
23	KFFZZ	19728	6X-4336	•SNAP RING CORE END PART OF KIT P/N 90-816.....	1
24	KFFZZ	19728	SAT-48	•RETAINER CORE PART OF KIT P/N 90-816.....	1
25	KFFZZ	19728	SAT-52	•SPRING CORE PART OF KIT P/N 90-816.....	1
26	KFFZZ	19728	SAT-47	•RETAINER CORE PART OF KIT P/N 90-816.....	1
27	KFFZZ	55883	IPD8S5128	•BOOT PART OF KIT P/N 90-816.....	1
28	KFFZZ	19728	SAT-46	•WASHER,SOLENOID PART OF KIT P/N 90-816.....	1
29	PAFZZ	68505	X-3331	•WASHER,LOCK	1
30	PAFZZ	96906	MS35207-261	•SCREW,MACHINE 10-32 X 3/8	1
31	KFFZZ	19728	SAT-1004F	•COVER AND CONTACT PART OF KIT P/N SAT-1004FS.....	1
32	KFFZZ	19728	SAT-32	•GASKET PART OF KIT P/N SAT-1004FS PART OF KIT P/N 37-123A	1
33	KFFZZ	19728	X-3508	•NUT HEXAGON ELASTIC PART OF KIT P/N 90-2225....	1

SECTION II		TM9-2320-280-24P-1			
(1)	(2)	(3)	(4)	(5)	(6)
ITEM NO	SMR CODE	CAGEC	PART NUMBER	DESCRIPTION AND USABLE ON CODES(UOC)	QTY
34	KFFZZ	19728	8X-349	•WASHER PLAIN #10 PART OF KIT P/N 90-2225	1
35	KFFZZ	19728	SAT-1014B	•CONTACT ASSEMBLY PART OF KIT P/N 90-2225.....	1
36	KFFZZ	19728	55-88A	•SPRING PART OF KIT P/N 90-2225.....	1
37	KFFZZ	19728	SAT-40	•WASHER STEEL #10 PART OF KIT P/N 90-2225	1
38	XBFZZ	19728	MBD-2566	ARMATURE,MOTOR	1
39	KFFZZ	19728	GK-174A	THRUST WASHER 0.0659 THICK PART OF KIT P/N 90-2840	1
40	KFFZZ	19728	ML-128A	THRUST WASHER .15 THICK PART OF KIT P/N 90-2840	8
41	PAFZZ	19728	MES-95S	GASKET	2
42	XAFZZ	19728	MFY-2101SS	FRAME AND FIELD ASY	2
43	PAFZZ	96906	MS35207-263	•SCREW,MACHINE #10-32 X 1/2	2
42	PAFZZ	68505	MZ-414S	•WASHER,FLAT	2
45	PAFZZ	68505	MFY-1064B	•HOLDER,ELECTRICAL C.....	1
46	KFFZZ	19728	MFJ-13A	•BRUSH STARTER MOTOR PART OF KIT P/N MFJ-2012BS	4
47	PAFZZ	96906	MS35207-261	•SCREW,MACHINE #10-32 X 3/8	2
48	KFFZZ	19728	MFY-19	•SPRING BRUSH PART OF KIT P/N MFY-19S.....	4
49	PAFZZ	96906	MS35650-302	•NUT,PLAIN,HEXAGON #10-32	2
50	PAFZZ	68505	92-2923	•WASHER,LOCK #10	2
51	PAFZZ	96906	MS35206-242	•SCREW,MACHINE #8-32 X 3/8	3
52	PAFZZ	19728	XA-744AP	•SEAL,O-RING STARTER PART OF KIT P/N 8S4680	3
53	KFFZZ	19728	MAW-37	BUSHING INSULATING PART OF KIT P/N 90-2837	1
54	KFFZZ	19728	MBD-444	WASHER,NEOPRENE PART OF KIT P/N 90-2837.....	1
55	KFFZZ	19728	MBD-438	WASHER INSULATING PART OF KIT P/N 90-2837	1
56	KFFZZ	19728	MBD-442	WASHER,CAP,STARTER PART OF KIT P/N 90-2837	1
57	KFFZZ	19728	MZ-294	WASHER PLAIN PART OF KIT P/N 90-2837	1
58	KFFZZ	19728	12X-201	WASHER LOCK PART OF KIT P/N 90-2837	4
59	KFFZZ	19728	8X-179	NUT,HEXACON 3/8-16 PART OF KIT P/N 90-2837	1
60	PFFZZ	34623	5741120	BRACKET,STARTER MOT	1
61	KFFZZ	19728	8X-830	NUT,HEXAGON 3/8 X 16 PART OF KIT P/N 90-2837	4
62	KFFZZ	19728	X-3925SC	WASHER INSULATING PART OF KIT P/N 90-2837	1
63	KFFZZ	19728	MBD-439	WASHER, PLAIN 3/8 PART OF KIT P/N 90-2837.....	1
64	KFFZZ	68505	MBD-2338	STUD, TERMINAL PART OF KIT P/N 90-2837	1
65	KFFZZ	19728	19X-4632	SCREW MACHINE #10-32 X 3/4 PART OF KIT P/N 90-2836	4
66	KFFZZ	19728	MFY-21	STUD,TERMINAL PART OF KIT P/N 90-2837	1

SECTION II		TM9-2320-280-24P-1			
(1)	(2)	(3)	(4)	(5)	(6)
ITEM NO	SMR CODE	CAGEC	PART NUMBER	DESCRIPTION AND USABLE ON CODES(UOC)	QTY
67	PAFFF	68505	MFY11025	COMMUTATOR.....	1
68	KFFZZ	19728	MAD-110A	•FELT OIL RETAINER PART OF KIT P/N 90-2838.....	1
69	KFFZZ	19728	MFY-117	•BEARING,ABS BRONZE PART OF KIT P/N 90-2838	1
70	KFFZZ	19728	MFJ-28A	STUD,TERMINAL PART OF KIT P/N 90-2837	1
71	KFFZZ	19728	MES 71A	WASHER,INSULATING PART OF KIT P/N 90-2837	1
72	KFFZZ	19728	MES-72	BUSHING,INSULATING PART OF KIT P/N 90-2837	1
73	KFFZZ	19728	MES-94	WASHER, NEOPRENE PART OF KIT P/N 90-2837.....	1
74	KFFZZ	19728	MES-93	WASHER, INSULATING PART OF KIT P/N 90-2837.....	1
75	KFFZZ	19728	MES-91	WASHER,CAP PART OF KIT P/N 90-2837	1
76	KFFZZ	19728	37X-4914	SCREW HEX HD 1/4-20 X 3/8 PART OF KIT P/N 90-2836	4
77	KFFZZ	19728	MES-78A	WASHER,PLAIN PART OF KIT P/N 90-2837	1
78	KFFZZ	19728	19X-3437	NUT,HEXAGON 1/2-13 PART OF KIT P/N 90-2837.....	1
79	PFFZZ	68505	MFY-109	BRACKET,SOLENOID.....	1
80	KFFZZ	19728	12X-198	WASHER LOCK PART OF KIT P/N 90-2837	2
81	KFFZZ	19728	8X-3439	NUT,HEXAGON 1/2-13 PART OF KIT P/N 90-2837.....	3

END OF FIGURE