

# DYNO-SCAN FOR WINDOWS



## Easy to Use

The Dyno-Scan™ for Windows software has an intuitive user interface.



## Rugged

The OBD II adapter and cable will provide years of trouble-free service.

## OBD II Adapter

### Size and Weight

4" x 1.75" x .875", 4oz

### Automotive Standards

CAN, VPW, PWM, ISO, KWP

## Diagnostic Power

Auterra's Dyno-Scan™ for Windows is two products in one! First, it's a full-featured On-Board Diagnostics II (OBD II) scan tool capable of diagnosing a wide range of vehicle problems. Read and clear trouble codes, view code descriptions, turn off the Check Engine light, monitor and record live sensor data using line graphs, bar graphs, or meters, and much more. Second, the remarkable dyno package measures engine horsepower and torque, acceleration times, and even instantaneous and trip fuel mileage. Try that with your average scan tool!

## Compatibility

The Dyno-Scan™ is universal so no matter the make or model, from Acura to Volvo and everywhere in-between, the Dyno-Scan™ will work with your 1996 and later automobile.<sup>1</sup>

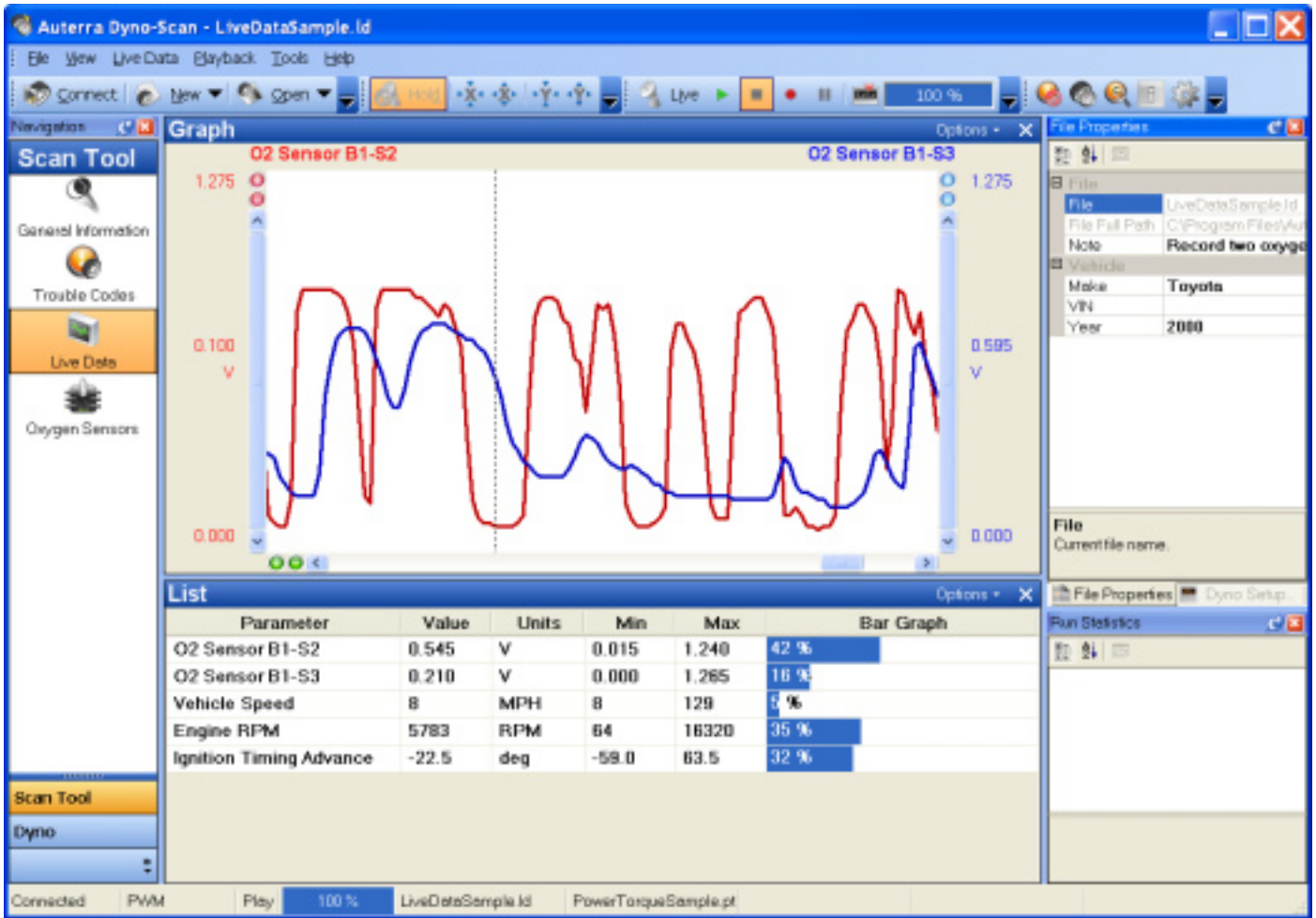
## Key Features

- Read and clear diagnostic trouble codes (DTCs)
- Optional support for vehicles equipped with CAN bus
- Integrated DTC description databases including enhanced and generic
- Turn off the vehicle's Check Engine or Service Engine Soon light
- Read and clear freeze frame data
- Graph screens accurately plot live sensor data
- Graphically zoom in/out and pan within a virtual trace buffer
- Monitor live sensor data using meters and bar graphs
- View an unlimited sensors simultaneously with variable sample rates
- Record and playback live sensor data streams
- Export recordings to a spreadsheet for further analysis
- Import recorded data from a Dyno-Scan for Palm (sold separately)
- Oxygen sensor monitoring and on-board test results
- I/M readiness. Metric and English units of measure
- Horsepower and torque measurements
- 0-60 time, 1/8 and 1/4 mile time and speed, MPG, and top speed
- Supports Windows 98 and higher desktop and notebook PCs
- Protocols: J1850 (PWM and VPW), ISO 9141, ISO 14230, and ISO 15765

<sup>1</sup> Some diesel vehicles are not OBD II compliant and not supported.

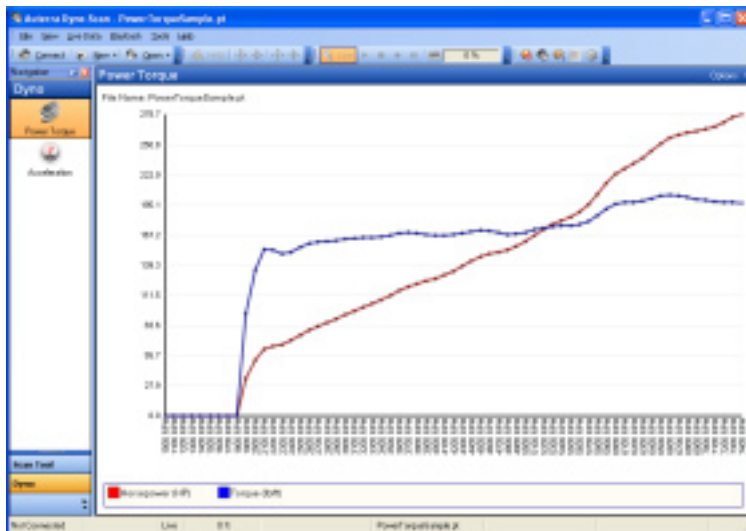
# Scan Tool Screens

**Super Features** - numerous ingenious features simplify vehicle diagnostics. Shown below are just a few of the screens available. **Windows Power** - careful attention to screen presentation offers unparalleled ease of use on your Windows PC.



# Dyno Screens

**Dyno Package** - Dyno measurements are corrected for elevation, drag coefficient, vehicle weight, air temperature, and more per the SAE J1349 standard.



# Complete System

A complete Dyno-Scan™ system is comprised of four components:

- Windows PC (sold separately)
- HotSync cable
- OBD II Adapter
- OBD II Cable



Auterra, LLC  
320 East 2nd Ave, Suite 111  
Escondido, CA 92025  
USA  
[www.auterraweb.com](http://www.auterraweb.com)