

AMERICAN PEARL



For a complete selection
of pearl products, be sure to visit
American Pearl's award-winning
website at www.americanpearl.com

7.5 x 8mm AAA quality 16 inch
cultured pearl necklace finished
with American Pearl's "Figure 8"
18K yellow gold signature clasp.
\$2090

* Americanpearl.com was recognized by Gemkey Magazine as one of the best websites on the internet

AMERICAN PEARL, 576 FIFTH AVENUE, SUITE 1102 NEW YORK, NY 10036

Prsrt STD US Postage PAID S Hackensack, NJ Permit # 897
--

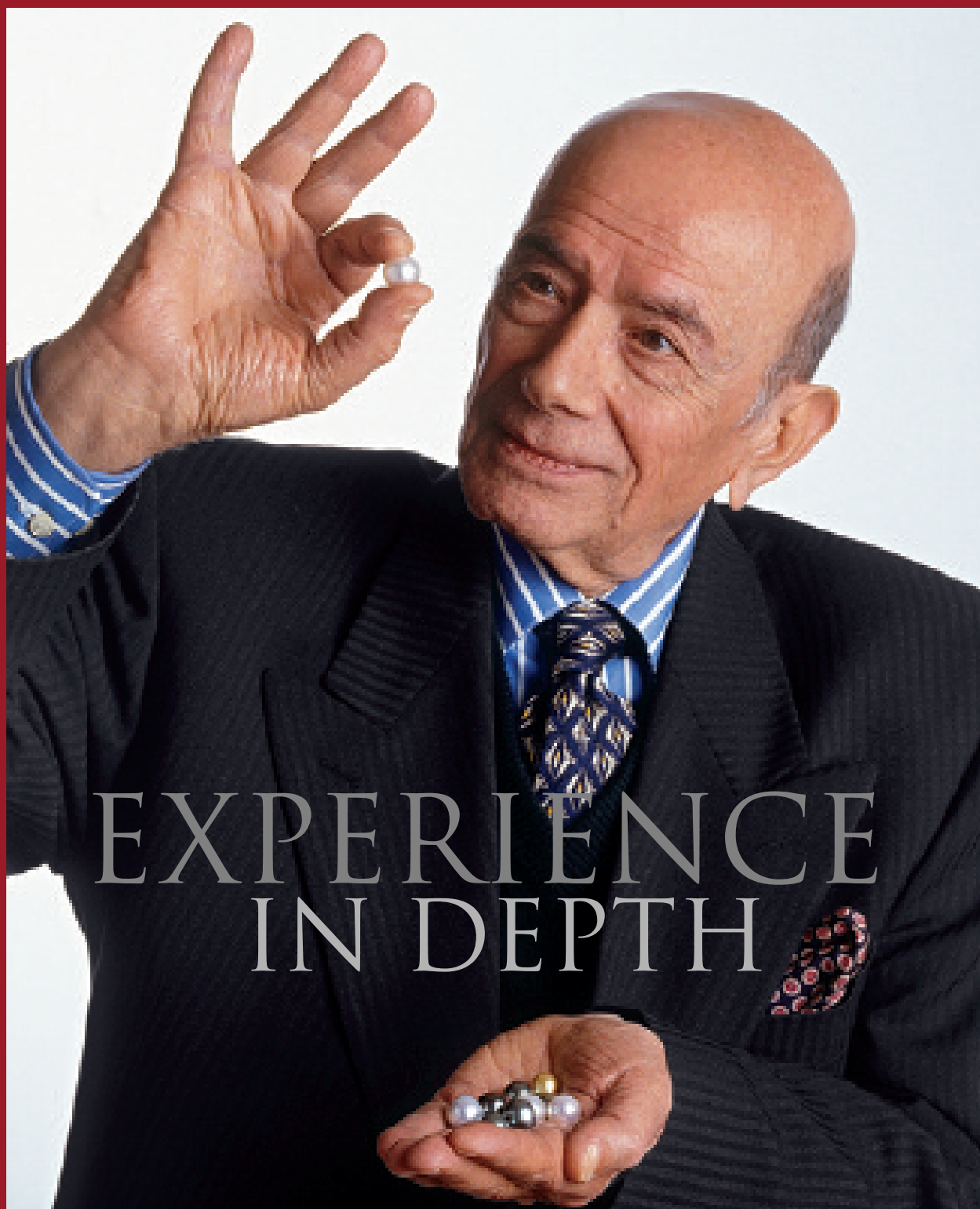
Photos may be larger than actual size to show detail. Diamond carat weights are approximate.
Prices are subject to change. Some merchandise is available in limited quantities. Published Nov. 2006.

AMERICAN PEARL



CELEBRATING 55 YEARS OF QUALITY, TRUST & EXPERIENCE

ESTABLISHED 1950



The history of pearls is measured in millenniums.
American Pearl's, in just over half a century. Yet both
are chronicles of the desire for perfection.



Pearls are not mined, cut, shaped, or redefined. They are born. Evolving naturally from a speck inside an oyster shell, they have represented the epitome of purity and sophistication since Cleopatra's time.

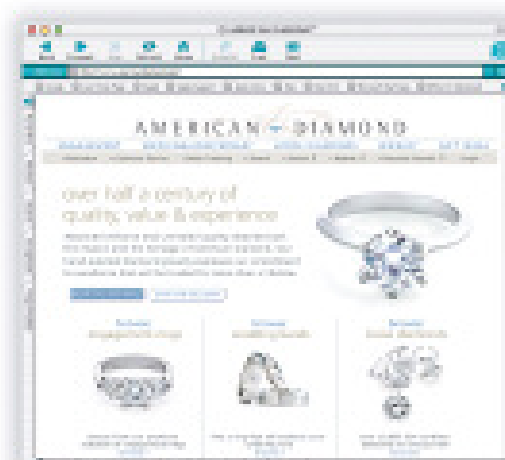
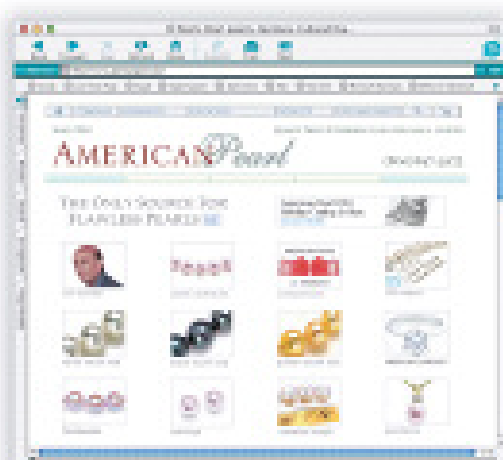
Our founder Charlie Bakhsh embraced this eternal obsession, too. It drove him to grow American Pearl from a small midtown storefront in 1950 to a business that redefined the industry, and made him the talk of it. From Japan to Hong Kong to Australia, Tahiti and Indonesia, Charlie cultivated sources, friends, contacts, experience, knowledge and – more important – access to the finest pearls in the world.

The network of relationships he created is his precious legacy, his pearl. It remains the foundation of our business and is the reason we can promise the world's highest quality pearls at prices that are truly wholesale and because we import direct, and because we're always

guaranteed the cream of our farmers' crops: flawless, unblemished, the top 1% of the harvest.

Each pearl is uniquely beautiful in its own right. Like the women they adorn, and the places that give birth to them. Throughout these pages, you'll get a flavor of these remote regions where Charlie blazed a trail, each of which produces exquisitely distinctive variations of this marine miracle. We hope you'll also get a better sense of how the ocean's greatest treasure can satisfy a range of gifting needs. The American Pearl web site promises much more information, more products, more stories and more suggestions, as does American Diamond, the renowned gemstones side of our business, highlighted on page 36.

Together, they offer a more rewarding online jewelry-buying experience all round. We invite you to visit and browse not simply to your heart's content, but in the expectation that you'll actually find it.



AMERICAN *Pearl*

AMERICAN *Diamond*

Americanpearl.com was recognized by Gemkey Magazine as one of the best websites on the internet.

www.americanpearl.com
To order call 800.847.3275



BLOSSOM

THE BIRTH OF THE CULTURED PEARL



Japan, 1905. A pearl fisherman, Kokichi, opens one of his oysters to reveal a glorious, perfectly round pearl. He is exultant, for he has changed history.



AAA quality pearl necklace, 6.5 x 7mm, 18K gold, 16 inches. \$1,290.

AAA quality pearl necklace, 7 x 7.5mm, 18K gold, 16 inches. \$1,500.

AAA quality pearl necklace, 7.5 x 8mm, 18K gold, 16 inches. \$1,890.

AAA quality pearl earrings, 8mm, 14K gold, \$300.



Kokichi's cultured pearl, the result of decades of painstaking experimentation and research. Previously, pearls were made by the oyster's defense against natural irritants (a shell fragment, a parasite), releasing layer upon layer of silky "nacre" to wrap the object, hardening to a crystalline shimmer.

He has taken this a step further, introducing a foreign object into the oyster to provoke the process. Now man – and Mother Nature – can create the gem. He has created the oyster farm. From this, the seed of the Akoya cultured pearl, and an entire industry, is sown.

Akoya pearls are now an essential element in any woman's wardrobe; from the elegant single strand to the power-dressing double and the aristocratic triple. As well as glorious gift ideas, the following section shows how to build your own Akoya necklace (p.10-11), and the grading system for these classic pearls.

www.americanpearl.com

To order call 800.847.3275

GIFT GUIDE

Be it a special occasion, or just a romantic surprise, pearls remain the purest expression of glamour and taste. And the quickest way to a woman's heart.

Here are some shining examples from our vast inventory, to complement her many styles and moods. Classic or contemporary, chic or casual, formal yet always in fashion. There are, of course, thousands more on our web site.

You know her. We know pearls. Together, we ought to be able to find the perfect gift. At the perfect price.



CHIC

Pearl earrings \$150.



CLASSIC

Pearl and diamond earrings \$270.



CONTEMPORARY

Black pearl ring \$280.



STYLISH

Pearl and diamond ring \$230.



REFINED

Pearl and diamond ring \$480.



FANCY

Pearl and diamond earrings \$580.



TIMELESS

Grey black 10.25mm Tahitian pearl and diamond ring, 18k gold. \$1,400.

www.americanpearl.com

To order call 800.847.3275



EXOTIC

Black Tahitian pearl and diamond earring, 18k gold. \$800.



SIMPLE

Pearl and diamond earrings \$550.



MODERN

Fresh-water pearl ring \$300.



FASHIONABLE

Fresh-water pearl earrings \$275.



FORMAL

Akoya cultured pearl rings, \$350. \$240.

CASUAL

AAA quality pearl (7 x 7.5mm) and diamond tin cup necklace, 18k gold, 16 inches. \$1,308.




ROMANTIC

White 11.3mm Australian pearl and diamond pendant, 18k gold, 18 inches. \$800.




UNUSUAL

White 10.25mm Australian pearl and diamond pendant, 18k gold, 18 inches. \$700.



A cultured pearl and gold station necklace. Composed of eight Japanese Akoya cultured pearls of AAA quality measuring from 8mm to 8.5mm, connected with 14K yellow or white gold chain. Length 18 inches. \$1,200. 36 Inches, 16 pearls. \$2,400.

A cultured pearl and gold drop earring. Composed of two AAA quality Japanese Akoya cultured pearls per earring measuring 8mm each, mounted in a 14K yellow drop setting. \$500.




An opera-length multicolor South Sea Pearl and gold station necklace. Composed of thirty Golden and White South Sea pearls measuring from 9mm to 9.5mm, connected with 14K yellow gold chain. Length 48 inches. \$3,900. Shown on the model as two of the four necklaces.

An opera-length multicolor South Sea Pearl and gold station necklace. Composed of thirty Black, Golden and White South Sea pearls measuring from 9mm to 9.5mm, connected with 14K white gold chain. Length 48 inches. \$3,900. Shown on the model as two of the four necklaces.

A pair of Tahitian pearl and diamond drop earrings. Each composed of a natural color black Tahitian pearl measuring 9mm, suspended from a gold and diamond connection, .28 carats t.d.w., mounted in 14K white gold. \$810.

www.americanpearl.com

To order call 800.847.3275



A double strand cultured pearl necklace. Composed of two strand of 8.5 to 9mm natural color Japanese Akoya cultured pearls of AA quality, completed with an 18K yellow gold two-row clasp. Length 16, 17 inches. \$6,806. 7.5 to 8mm. \$2,867.

A pair of diamond and platinum earrings. Each composed of a single ideal cut round brilliant diamond weighing 1.0 carats or 2.0 carats t.d.w. The diamonds are G/H color, VS1/VS2 clarity set in a four prong screw back setting. \$11,000.

A diamond and platinum ring. Composed of a 2.64 carat emerald cut diamond center stone of D color, VS1 clarity, flanked by two matching tapered baguettes, .58 carats t.d.w. To use this ring setting and select another center stone, visit www.americandiamond.com and select option Build Your Own Ring. \$33,000.

A diamond line bracelet. Composed of 57 asscher cut diamonds, each diamond approximately .20 carats, the whole bracelet weighing approximately 11.40 carats, G color, VS1 clarity, set in platinum. Length 6.5 inches. Call for price.

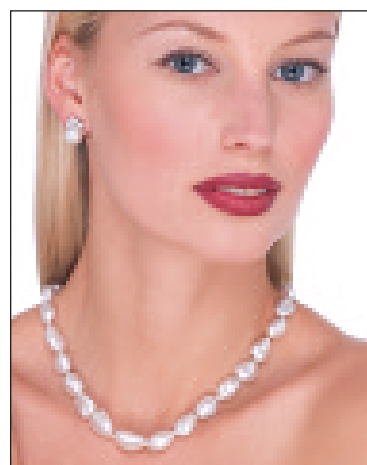
Visit www.americandiamond.com for all diamond gift information, orders, other sizes and configurations.



A cultured pearl and gold station necklace. Composed of eleven Japanese Akoya cultured pearls of A+ quality measuring from 7 to 7.5mm, connected with an 18K yellow or white gold chain. Length 16 inches. \$275.

A single strand cultured pearl bracelet. Composed of 6 to 6.5mm natural color Japanese Akoya cultured pearls of AAA quality, completed with an 18K yellow gold clasp. Length 7 inches. \$513.

A single strand white Australian Keshi South Sea cultured pearl necklace. Composed of 29 natural South Sea pearls measuring from 9.5 to 13mm, completed with an 18K white gold clasp. Unlike cultured pearls, Keshi pearls are natural pearls that are found. As such, they are amongst the rarest pearls in the world. Length 17 inches. \$12,000.





A double strand cultured pearl and diamond necklace. Composed of two 7.5 x 8mm natural color Japanese Akoya cultured pearls of AA Quality, completed with an 18K white gold and diamond clasp, with diamonds weighing approximately 1.0 carats t.d.w., G color, VS1 clarity. Length 17, 18 inches. \$4,900.

A pearl and diamond hoop earring. Each composed of a single natural color cultured pearl of AAA quality measuring 9mm within a diamond channel setting. The diamonds weighing .5 carats mounted in 18K white gold. \$1,700.




A double strand cultured pearl and diamond necklace. Composed of two 6.5 x 7mm natural color Japanese Akoya cultured pearls of AAA Quality, completed with an 18K white gold and diamond clasp, with diamonds weighing approximately .75 carats t.d.w., G color, VS1 clarity. Length 16, 17 inches. \$3,500.

A pair of mabe pearl earclips. Each composed of a white Australian mabe pearl measuring 14mm mounted within an 18K white gold setting. \$800.

Pearl and diamond earrings \$425.

Luster is considered the most important quality factor in pearls. Luster refers both to a pearl's brilliance — the way its surface reflects light — and its inner glow: the way it refracts light. A pearl's luster is generally evaluated in terms of "very high (AAA Quality)" to "low (A Quality)," with grades of "medium" in between. Very high-luster pearls are bright, and have a deep-seated glow. They reflect objects near them clearly. Low-luster pearls, on the other hand, have low reflective and refractive qualities. They may appear too white, or dull or chalky, and they usually have only marginal nacre thickness. Consumers should always purchase the finest quality pearls in their price range.





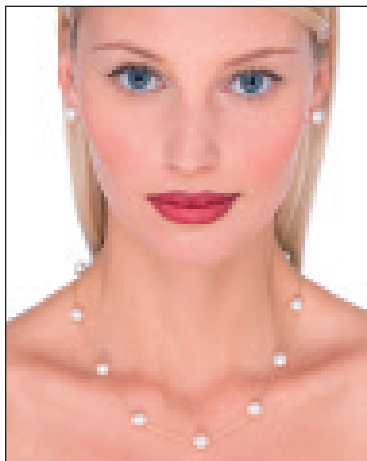
A pair of south sea pearl and diamond earrings. Each composed of a single natural color Australian south sea cultured pearl measuring 9.75mm with a marquise diamond surround, the 10 diamonds weighing .70 carats, mounted in 18k white gold. \$2,350.

A triple strand cultured pearl and diamond necklace. Composed of three strands of 7 x 7.5mm natural color Japanese Akoya cultured pearls of AAA quality, completed with an 18K white gold diamond flower clasp with 33 diamonds weighing 1.80 carats t.d.w., G color, VS1 clarity. Length 18, 18.5, 19 inches. \$9,200.

A cultured pearl bracelet. Composed of three strands of natural color Japanese Akoya cultured pearls of AAA quality measuring from 8 to 8.5mm, connected with a diamond bayonette clasp, 60 diamonds weighing .60 carats, mounted in 18k white gold. Length 7 inches. \$4,500.



A single strand Japanese Akoya and black Tahitian South Sea cultured pearl necklace. Composed of 7.5 to 8mm natural-color Japanese Akoya cultured pearls of AAA quality, completed by a 10mm Starry Night pearl and diamond clasp with 6 diamonds weighing .05 carats. Length 18 inches. \$3,000. Including 10.7mm black Tahitian South Sea pearl and diamond removable enhancer. \$3,600.



A cultured pearl and gold station necklace. Composed of eleven Japanese Akoya cultured pearls of AAA quality measuring from 8 to 8.5mm, connected with an 18K yellow or white gold chain. Length 16 inches. \$850.



A pair of cultured pearl and diamond earrings. Each composed of a single natural color AAA quality Japanese Akoya cultured pearl measuring 8mm, artfully studded with a round brilliant cut diamond weighing .30 carats t.d.w., mounted in 18K white gold. \$850.

www.americanpearl.com

To order call 800.847.3275



A pearl and diamond necklace. Composed of 23 natural color AAA quality Japanese Akoya cultured pearls measuring approximately 8.5mm, with 90 diamonds weighing 7.33 carats, set in 18k white gold. Length 16 inches. \$16,000.


A pearl and diamond earring. Each composed of two natural color AAA quality Japanese Akoya cultured pearls measuring 8mm and 8.5mm, with 8 diamonds weighing .60carats, mounted in 18k white gold. \$1,300.



A double strand freshwater opera-length necklace. Composed of two strands of 8 x 8.5mm natural color lavender Chinese freshwater pearls, completed with an 18K white gold safety clasp. \$720. Single strand. \$360.

A pair of freshwater pearl and diamond earrings. Each composed of a single natural color lavender Chinese freshwater pearl measuring 9mm, artfully studded with a baguette cut diamond weighing .15 carats t.d.w., mounted in 18K white gold. \$325.

www.americanpearl.com
To order call 800.847.3275



A double strand cultured pearl and diamond necklace. Composed of two strands of 8 x 8.5mm Japanese Akoya cultured pearls of AAA quality, completed with an 18K white gold diamond flower clasp with 33 diamonds weighing .36 carats. Length 24, 25 inches. \$12,000.

A pair of diamond and platinum earrings. Each composed of a single ideal cut round brilliant diamond weighing .75 carats or 1.50 carats t.d.w. The diamonds are G/H color, VS1/VS2 clarity set in a four prong screw back setting. \$6,000.

A diamond and platinum ring. Composed of a center round brilliant cut diamond flanked by two round brilliant diamond side stones, each weighing .34 carats, G color, VS1 clarity. Please visit www.americandiamond.com to choose your own center stone to complete this ring.

Visit www.americandiamond.com for all diamond gift information, orders, other sizes and configurations.

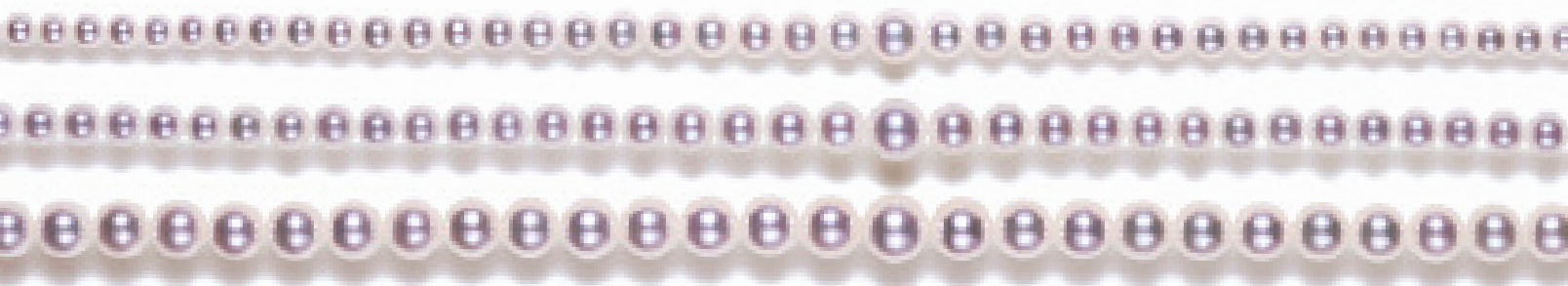
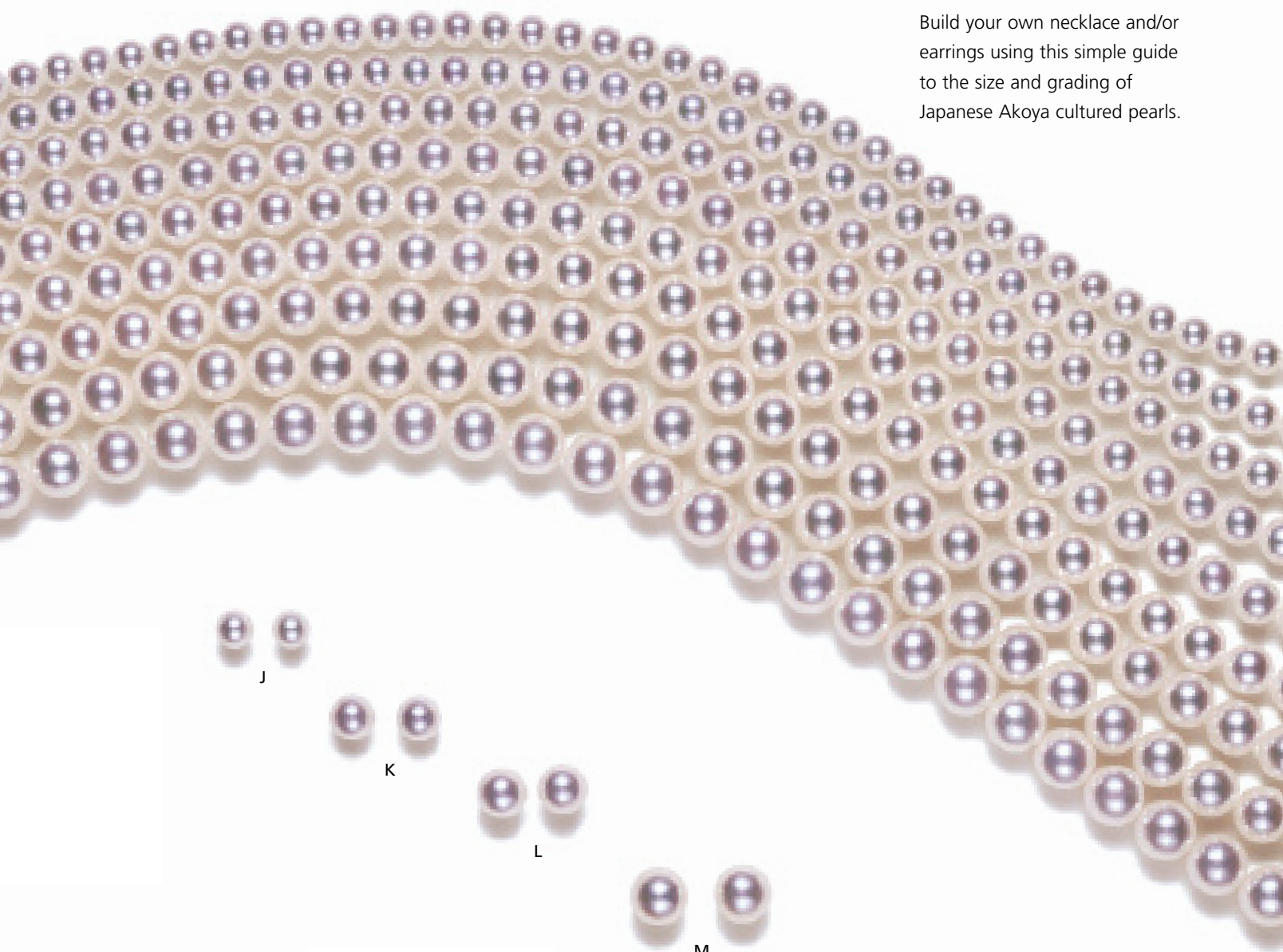
A freshwater pearl and gold station necklace. Composed of 10 natural color lavender Chinese freshwater pearls measuring from 9mm to 10mm, connected with 14K white gold chain. Length 37 inches. \$1,200.

A pair of freshwater pearl and diamond drop earrings. Each composed of a lavender Chinese freshwater pearl measuring 7.5mm, suspended from a gold and diamond connection, .06 carats t.d.w., mounted in 14K white gold. \$225.

www.americanpearl.com
To order call 800.847.3275

CREATE YOUR OWN CLASSIC GIFT

Build your own necklace and/or earrings using this simple guide to the size and grading of Japanese Akoya cultured pearls.



16 INCH SINGLE STRAND JAPANESE AKOYA CULTURED PEARL NECKLACE

	Size (mm)	Collection	AAA	AA	A+	A
A	5.5 x 6	N/A	\$850	\$450	\$350	\$250
B	6 x 6.5	N/A	\$950	\$750	\$550	\$450
C	6.5 x 7	\$1,500	\$1,290	\$990	\$825	\$725
D	7 x 7.5	\$1,890	\$1,500	\$1,090	\$790	\$690
E	7.5 x 8	\$2,750	\$1,890	\$1,390	\$1,190	\$990
F	8 x 8.5	\$4,100	\$2,750	\$2,200	\$1,750	\$1,490
G	8.5 x 9	\$6,000	\$4,100	\$3,300	\$2,200	\$1,750
H	9 x 9.5	N/A	\$10,000	\$6,500	\$3,500	\$2,200
I	9.5 x 10	N/A	\$24,000	\$12,000	\$8,000	\$6,000

To view our selection of single strand necklaces, please visit www.americanpearl.com/necklaces.html.
For double strand necklaces visit www.americanpearl.com/doublestrand.html.

JAPANESE AKOYA CULTURED PEARL STUD EARRINGS

	Size (mm)	Collection	AAA	AA	A+	A
J	6	N/A	\$150	\$125	\$100	\$75
K	7	\$300	\$200	\$150	\$125	\$100
L	8	\$450	\$300	\$225	\$175	\$100
M	9	\$850	\$600	\$500	\$400	\$300

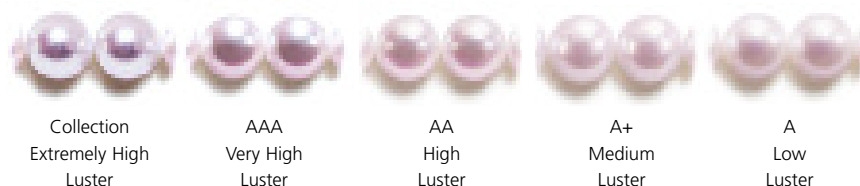
To view our selection of single strand necklaces, please visit www.americanpearl.com/pearl-earrings.html.

16 INCH GRADUATED SINGLE STRAND CULTURED PEARL NECKLACE

	Size (mm)	Collection	AAA	AA	A+	A
N	3.5 x 7.5	\$1,000	\$700	\$560	\$450	\$360
O	4 x 8	\$1,850	\$1,250	\$1,000	\$800	\$640
P	7.5 x 9	\$4,500	\$3,000	\$2,400	\$1,900	\$1,520

Necklace prices are based on 16 inch length. For longer lengths, please visit our web site at www.americanpearl.com or phone 1.800.847.3275 to speak with a pearl specialist.

JAPANESE CULTURED PEARL GRADING



Collection
Extremely High
Luster

AAA
Very High
Luster

AA
High
Luster

A+
Medium
Luster

A
Low
Luster



A cultured pearl necklace.
7.5 x 8mm AAA quality 16 inch
cultured pearl necklace strung on
double stranded silk thread with
two knots between each pearl
and affixed with an 18K yellow
gold safety clasp. \$1890.

A pair of cultured pearl earrings.
Each composed of a single natural
color Japanese Akoya cultured pearl
measuring approximately 8mm,
mounted in 18K yellow gold. \$300.

www.americanpearl.com

To order call 800.847.3275

SELECT ANOTHER LENGTH

- A. 16 inch choker
- B. 18 inch princess
- C. 20 inch matinee
- D. 22 inch matinee
- E. 24 inch matinee
- F. 30 inch opera
- G. 36 inch opera

CHOKER

14 to 16 inches

A pearl choker is perhaps the most classic and yet versatile of all the single strand lengths. A simple pearl choker can go with virtually any outfit from casual to fancy evening wear, and just about any neckline imaginable.

PRINCESS

17 to 19 inches

The princess length necklace is best suited for crew and high necklines. It also complements low plunging necklines. This necklace is perfect for attaching a pendant or pearl enhancer.

MATINEE

20 to 24 inches

Longer than the choker, and just a bit shorter than an opera length, the matinee necklace is the right choice for casual or business dressing.

OPERA

28 to 36 inches

The opera necklace is the queen of all the lengths. When worn as a single strand, it is refined and perfect for high or crew necklines. When doubled upon itself, it serves as a versatile two strand choker or princess.



An opera-length South Sea pearl necklace. Composed of graduated baroque shape white south sea cultured pearls measuring approximately from 9 to 12.5mm, completed by an 18K white gold safety clasp. Length 34 inches. \$5,800.

A pair of South Sea cultured pearl and diamond drop earrings. Each composed of a baroque shape white South Sea cultured pearl measuring 11mm, suspended from a round brilliant diamond, .08 carats t.d.w., mounted in 18K white gold. \$475.





A cultured pearl and gold station necklace. Composed of nine Japanese Akoya cultured pearls of AAA quality measuring from 8.5 to 9mm, connected with 14K yellow or white gold chain. Length 20 inches. \$1,200. 40 Inches, eighteen pearls. \$2,400.

A cultured pearl and gold drop earring. Composed of two AAA quality Japanese Akoya cultured pearls per earring measuring 8mm each, mounted in a 14K yellow drop setting. \$500.

Local legend has it that the Tahitian God Oro used his rainbows to visit Earth, creating mother-of-pearl and ensuring the spectrum of ocean bounty led by the glorious black pearl.

MYSTERY

TAHITI'S DARK SECRET UNLOCKED

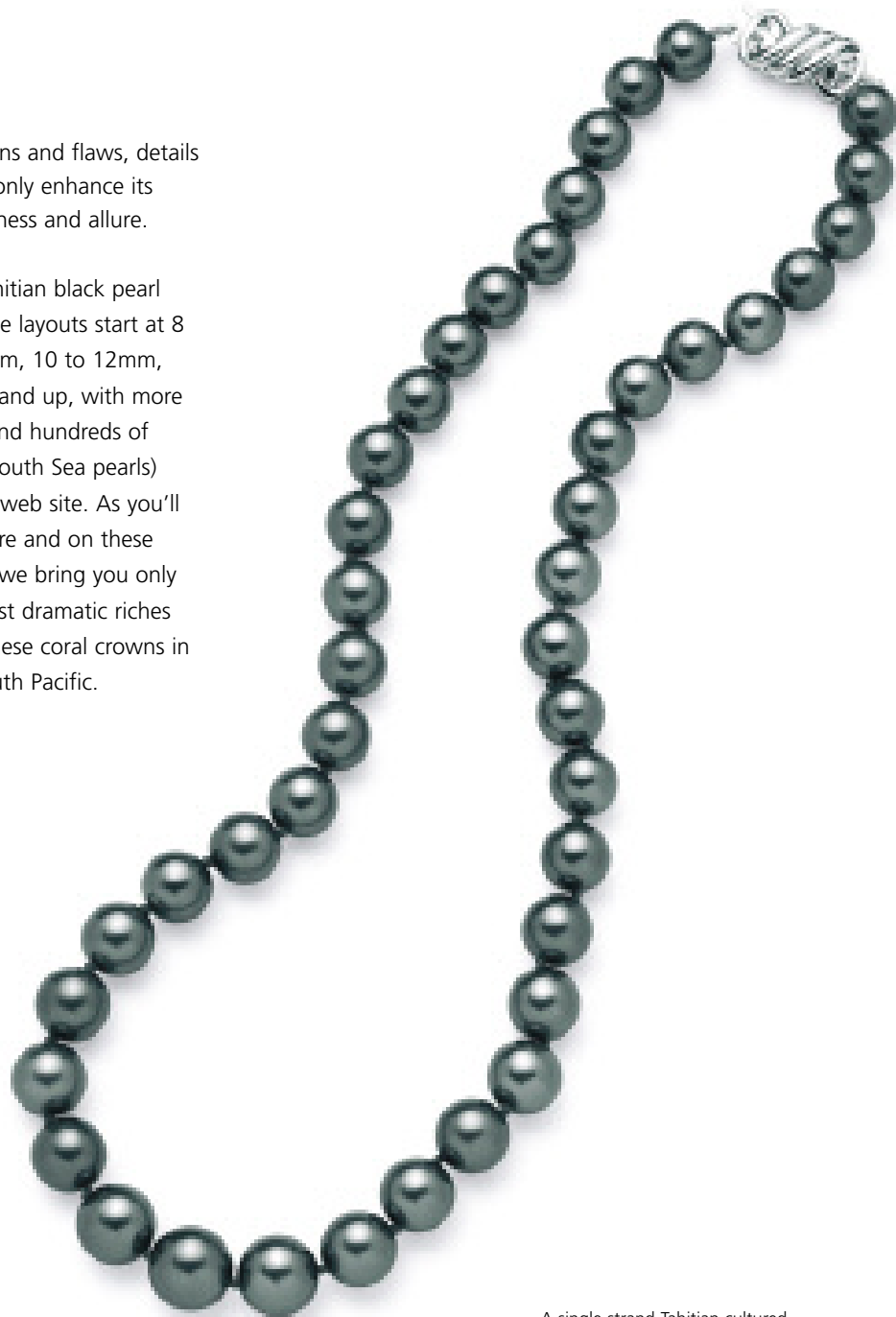


Although the truth is more prosaic (in the form of the black-lipped oyster), French Polynesia nonetheless enchanted Charlie. Not just the idyllic peace of these island paradises, but the gentleness of the people. And the quality of the gems.

Ranging from black to silvery white to gold to all the hues on a peacock's tail, South Sea pearls are larger and take longer to cultivate; up to 3 years in some cases. Accordingly, there's more time for the pearl's surface to accrue

variations and flaws, details which only enhance its uniqueness and allure.

Our Tahitian black pearl necklace layouts start at 8 to 10mm, 10 to 12mm, 12mm and up, with more sizes (and hundreds of other South Sea pearls) on our web site. As you'll see there and on these pages, we bring you only the most dramatic riches from these coral crowns in the South Pacific.



A pair of Tahitian cultured pearl earrings. Each composed of a single natural color cultured pearl measuring approximately 8.5mm, mounted in 14K white gold. \$375.




A pair of Tahitian South Sea pearl and diamond earrings. Each composed of a single natural color South Sea cultured pearl measuring 10mm, artfully studded with 10 round brilliant diamonds weighing .30 carats, mounted in 18K white gold. \$2,250.

A single strand Tahitian cultured pearl necklace. Composed of 43 graduating natural color black green Tahitian cultured pearls measuring from 8 to 10mm. Completed by an 18K white gold safety clasp. Length 18 inches. See page 15 for model photograph. \$3,200.

A Tahitian pearl ring. Composed of a single natural color black Tahitian cultured pearl measuring 10.25mm mounted in 18K white gold. \$550.

A pearl and diamond ring. Composed of a single natural color black Tahitian cultured pearl measuring 10mm, set within a diamond surround. The 8 diamonds weighing .64 carats, mounted in 18K white gold. \$2,500.



A rope-length Tahitian pearl and gold station necklace. Composed of twenty-two, black Tahitian South Sea pearls measuring from 10 to 12mm, connected with 14K white gold chain. Shown on the model as a triple strand. Length 66 inches. \$5,500. 33 Inch opera-length. \$2,750.

A pair of Tahitian pearl and gold drop earring. Each composed of two natural color black Tahitian pearls measuring 8mm, mounted in a 14K white gold drop setting. \$675.




An opera-length Tahitian multicolor pearl necklace. Composed of 36 inches of round 10 to 12mm natural color black Tahitian south sea cultured pearls, completed with an 18K white gold safety clasp. \$7,900.

A pair of Tahitian south sea pearl earclips. Composed of a single natural color black Tahitian south sea pearl measuring 10.5mm within a diamond surround, the 52 diamonds weighing .64 carats t.d.w., mounted in 18K white gold. \$2,300.

www.americanpearl.com

To order call 800.847.3275



A Tahitian pearl and gold station necklace. Composed of eight natural color black Tahitian south sea pearls measuring from 8mm to 8.5mm, connected with 14K white gold chain. Length 18 inches. \$1,400. 36 Inches, 16 pearls. \$2,800.

A pair of Tahitian pearl and gold drop earrings. Each composed of two natural color black Tahitian pearls measuring 8mm, mounted in a 14K white gold drop setting. \$675.



A Double Strand Tahitian Multicolor Cultured Pearl Bracelet. Composed of 34 graduated natural color cultured pearls measuring from 9.5 to 10.5mm, Connected with a diamond Bayonette clasp, mounted in 18K white gold. Length 7 inches. \$4,600.

A double strand Tahitian cultured pearl necklace. Composed of graduated natural multicolor black Tahitian cultured pearls measuring from 10 to 11mm, completed with an 18K white gold two row knot clasp. Length 16, 17 inches. \$7,900. Single strand. \$3,950.

A Pearl and Diamond Ring. Composed of a single natural color black Tahitian cultured pearl measuring 10.25mm, within a pavé-set surround, the 32 diamonds weighing 0.36 carats, mounted in 18K white gold. \$1,400.

A Pair of Tahitian Cultured Pearl Earrings. Each composed of a single natural color black Tahitian South Sea cultured pearl measuring approximately 11mm, mounted in 18K white gold. \$1,000.



A Tahitian pearl and gold station necklace. Composed of nine natural color black Tahitian south sea pearls measuring from 9mm to 9.5mm, connected with 14K white gold chain. Length 20 inches. \$2,200. 36 Inches, 16 pearls. \$4,400.

A pair of Tahitian pearl and gold drop earrings. Each composed of two natural color black Tahitian pearls measuring 8mm, mounted in a 14K white gold drop setting. \$675.



A black Tahitian south sea cultured pearl necklace measuring from 10 to 11mm, 18k gold, \$5,800.

12mm black Tahitian south sea pearl and diamond earring, 18k gold, \$2,600.



A Double Strand Tahitian and Australian South Sea Pearl Necklace. Composed of black Tahitian and white Australian graduated natural color south sea cultured pearls measuring from 10 to 11 mm, connected with a diamond Bayonette two row clasp, mounted in 18K white gold. Length 15 inches, 16 inches. Single Strand Necklace. \$12,000. Double Strand Necklace. \$22,000. Matching black and white 12mm earrings in 18k white gold. \$2,300.



A black grey Tahitian south sea cultured pearl necklace measuring from 10 to 11mm, composed of 34 graduated pearls, completed with an 18K gold clasp, 16 inches, \$3,900.

A pair of Tahitian cultured pearl earclips. Each composed of a black Tahitian cultured pearl measuring 10mm, set within a pavé diamond surround, .21 carats, mounted in 18K white gold. \$1,350.

10mm grey black Tahitian south sea pearl and diamond ring, 18k gold, \$1,400.



www.americanpearl.com

To order call 800.847.3275



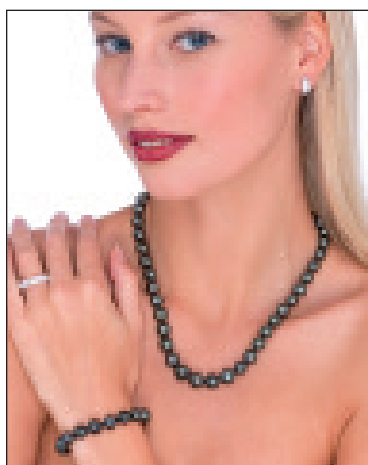
A Tahitian Cultured Pearl Ring. Composed of a single natural color black cultured pearl measuring 13mm within a diamond pavé-set surround, the 152 diamonds weighing 2.06 carats, mounted in 18k white gold. \$3,500.

A Single Strand Tahitian Cultured Pearl and Diamond Necklace. Composed of graduated natural color black Tahitian South Sea pearls measuring from 11 to 12.8mm, interspersed by 28 white gold 18K diamond rondells weighing 5.6 carats t.d.w., G color, VS clarity, completed with an 11mm 18K white gold diamond ball clasp. Length 16 inches. \$22,000.

A Pair of Tahitian Cultured Pearl Earclips. Each composed of a single natural color black cultured pearl measuring approximately 13mm within a diamond pavé-set surround, the 75 diamonds weighing 2.18 carats, mounted in 18k white gold. \$6,500.



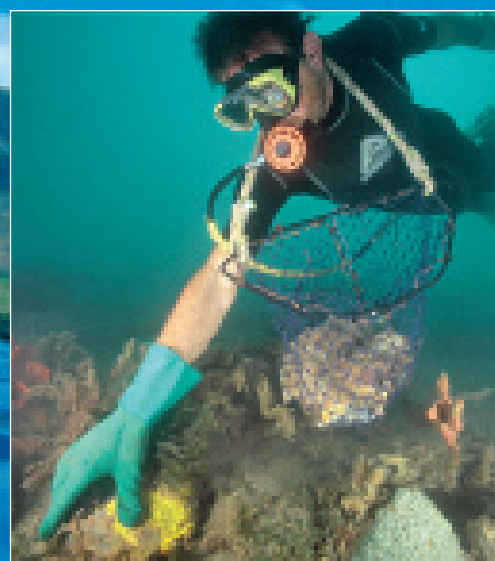
A double strand Tahitian cultured pearl necklace. Composed of 72 graduated natural multicolor black Tahitian cultured pearls measuring from 10 to 11mm, completed with an 18K white gold two row knot clasp. Length 16, 17 inches. \$7,900. Single strand. \$3,950.



A pair of Tahitian cultured pearl earrings. Each composed of a black Tahitian cultured pearl measuring 10mm, set within a pavé diamond surround, .21 carats, mounted in 18K white gold. \$1,350.

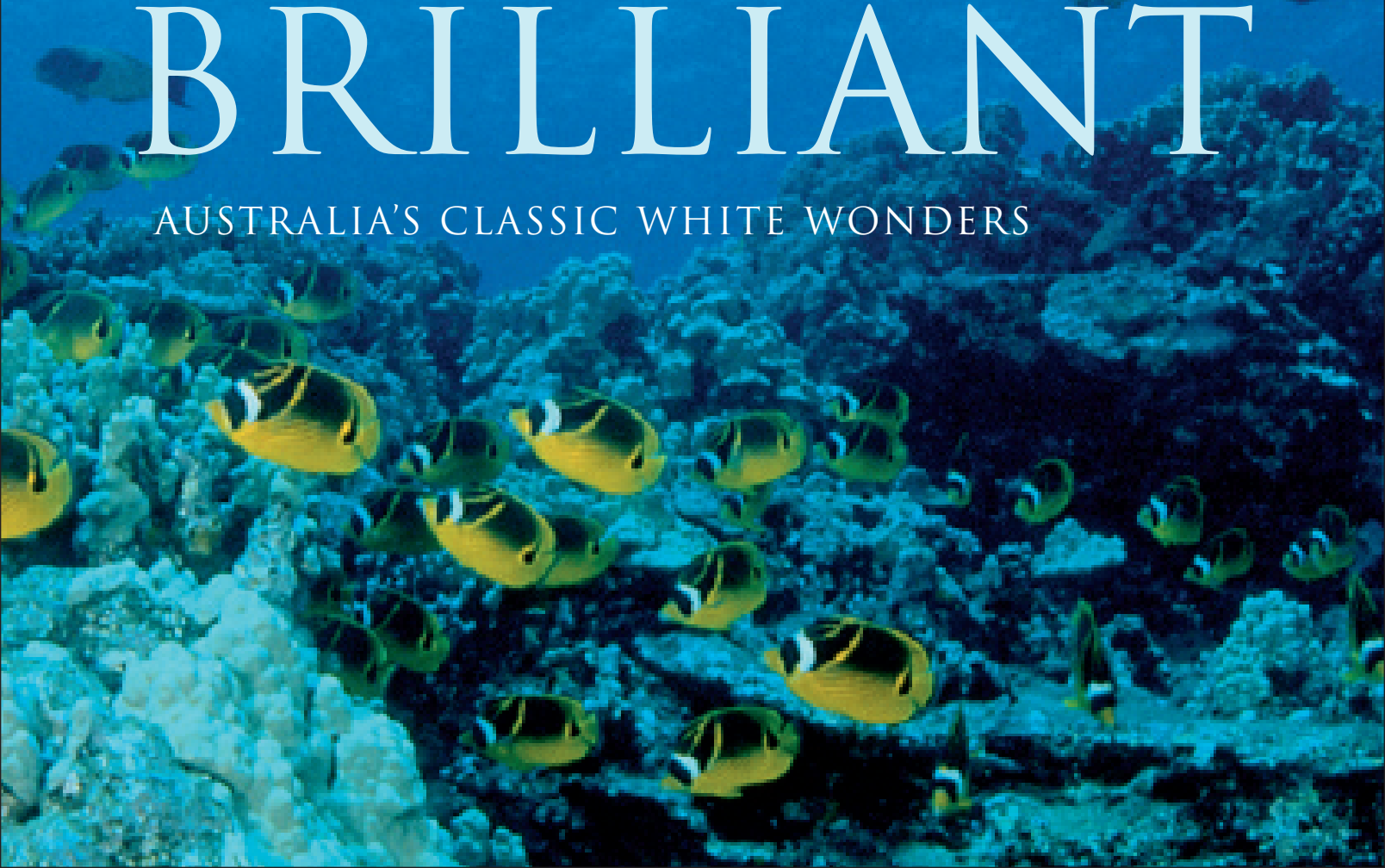
A single strand Tahitian cultured pearl necklace. Composed of graduating natural color black green Tahitian cultured pearls measuring from 8 to 10mm. Completed by an 18K white gold safety clasp. Length 18 inches. \$3,200.

A single strand Tahitian cultured pearl bracelet. Composed of graduated natural color cultured pearls measuring from 8 to 9mm, connected with an 18K white gold safety clasp. Length 7 inches. \$1,200.



BRILLIANT

AUSTRALIA'S CLASSIC WHITE WONDERS





A single strand South Sea cultured pearl necklace. Composed of 33 graduated cultured pearls measuring approximately from 10 to 11mm, completed by an 18K white gold safety clasp. Length 16 inches. \$8,800.

A pair of South Sea cultured pearl earrings. Each composed of a single natural color Australian cultured pearl measuring approximately 10mm, mounted in 18K white gold. \$1,800.

Thousands of years ago, the pearl was at the heart of ancient Aborigine culture. Oyster shells and pearls became tribal costume decorations, and were traded for food and tools. They also believed this natural gem had supernatural powers, and could interpret dreams.


The classic white pearl cast a powerful spell on Charlie, too. As did the bountiful North Australian coastline, home to the Silver Lip Oyster, which produces this larger, rounder pearl with a rich satiny finish in white, silver or cream.

Considered the "Rolls Royce" of cultivated pearls, we are driven to present these exquisite delights from down under to the world over. As ever, there are many, many more Australian and other South Sea pearl gift ideas on our web site.

A rope-length South Sea pearl and gold station necklace. Composed of twenty-two, white South Sea pearls measuring from 10 to 12mm, connected with 14K yellow gold chain. Shown on the model as a triple strand. Length 66 inches. \$6,800. 33 Inch opera-length. \$3,400.

A cultured pearl and gold drop earring. Composed of two AAA quality Japanese Akoya cultured pearls per earring measuring 8mm each, mounted in a 14K yellow drop setting. \$500.






A pair of cultured pearl earrings. Each composed of a single natural color Japanese Akoya cultured pearl measuring approximately 9mm, mounted in 18K yellow gold. \$600.

A single strand South Sea cultured pearl necklace. Composed of 33 graduated cultured pearls measuring approximately from 10 to 11mm, completed by an 18K white gold safety clasp, Length 16 inches. \$8,800.

www.americanpearl.com

To order call 800.847.3275



An opera-length Tahitian multicolor Baroque South Sea pearl necklace. Composed of 36 inches of 10 to 13mm natural color black Tahitian cultured pearls, completed with an 18K white gold safety clasp. Length 32 inches. \$6,500.

A pair of Tahitian pearl and diamond drop earrings. Each composed of a natural color black Tahitian pearl measuring 8.5mm, suspended from a gold and diamond hoop, .40 carats t.d.w., mounted in 14K white gold. \$995.

A single strand South Sea cultured pearl necklace. Composed of 31 graduated cultured pearls measuring from 12 to 13.7mm, completed by an 18K white gold safety clasp. Length 16 inches. \$18,000.

A pair of South Sea cultured pearl and diamond earclips. Each composed of a white Australian cultured pearl measuring 12.25mm set within a diamond surround, 1.35 carats t.d.w., mounted in 18K white gold. \$5,500.

A diamond and platinum ring. Composed of a center emerald cut diamond flanked by two emerald cut diamond side stones, each weighing .80 carats, G color, VS1 clarity. Please visit www.americandiamond.com to choose your own center stone to complete this ring.

A diamond eternity band. Prong-set with 20 emerald cut diamonds, each diamond .33 carats, 6.60 carats t.d.w., G color, VS1 clarity mounted in platinum, ring size 6. Call for price.


A diamond line bracelet. Composed of 47 emerald cut diamonds, each diamond approximately .33 carats, the whole bracelet weighing approximately 15.50 carats, G color, VS1 clarity, set in platinum. Length 6.5 inches. Call for price.

Visit www.americandiamond.com for all diamond and colored stones gift information, orders, other sizes and configurations.



A Single Strand south sea pearl and diamond necklace. Composed of graduated natural color white Australian South Sea pearls measuring from 12 to 14mm, interspersed by 28 yellow gold 18K diamond rondells weighing 5.6 carats t.d.w., G color, VS clarity, completed with an 11mm 18K yellow gold diamond ball clasp. Length 16 inches. \$34,000.

A pair of Australian south sea pearl earclips. Each composed of a single natural color south sea cultured pearl measuring 12.5mm, artfully studded with 10 round brilliant diamonds weighing .30 carats, mounted in 18K yellow gold. \$5,000.



A pair of South Sea cultured pearl and diamond drop earrings. Each composed of a baroque shape white South Sea cultured pearl measuring 11mm, suspended from a round brilliant diamond, .08 carats t.d.w., mounted in 18K white gold. \$475.

An opera-length Tahitian, freshwater and south sea multicolor Baroque pearl necklace. Composed of 36 inches of 7 to 15mm natural color black, orange, lavender, golden and white cultured pearls, completed with an 18K white gold safety clasp. Length 36 inches. \$3,200.

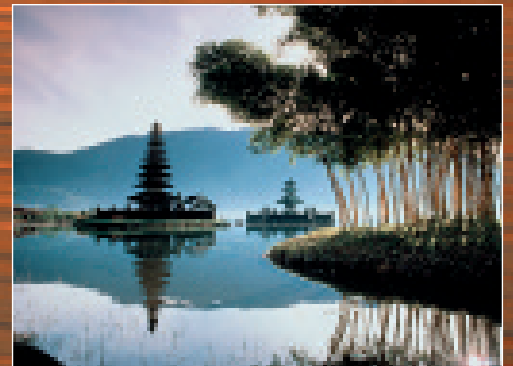
www.americanpearl.com
To order call 800.847.3275

GLOW

CAPTURING INDONESIA'S GOLDEN GIFTS



During his adventures in this archipelago of jigsaw coastlines and caressing currents, the Indonesian golden pearl became Charlie's personal favorite. Conceived from the vivid golden mantle tissue on the rim of the Pinctada Maxima oyster's mother-of-pearl, its breathtaking appearance makes it the rarest of all pearls.



A golden South Sea cultured pearl pendant necklace. Composed of 3 graduating natural color golden South Sea cultured pearls measuring 10, 11 and 12mm, completed with an 18K yellow gold chain. Length 18 inches. \$4,800.



Indonesia also produces marvelous champagne-colored pearls, but those perfect golden spheres hold a particular place in the hearts of pearl aficionados.

Every five years we meet our Indonesian farmers, some of whom we've known since they were children, to celebrate

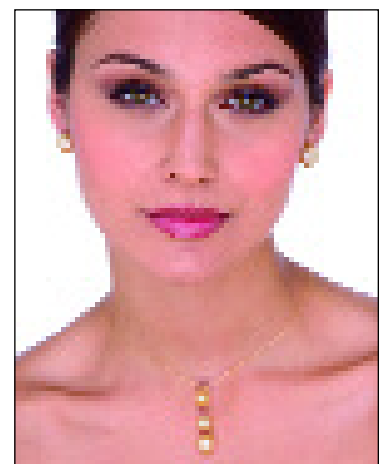
our friendship and the phenomenal quality of their latest harvest.

Take a look at the fruits of their labors on these pages, and go online for further wonders from the South Seas. Then marvel how precious few companies can bring you such perfection and value.

A single strand golden South Sea cultured pearl necklace. Composed of graduating natural color golden South Sea cultured pearls measuring from 10 to 12mm, completed with a 10mm 18K yellow gold pavé-set ball clasp with diamonds weighing 1.1 carats t.d.w. Length 16 inches. \$9,400.


A golden South Sea cultured pearl ring. Composed of a single natural color cultured pearl measuring approximately 10mm, mounted in 18K yellow gold. \$1,800.

A pair of golden cultured pearl earrings. Each composed of a single natural color golden Indonesian South Sea cultured pearl measuring 10mm, mounted in 18K yellow gold. \$1,800.



www.americanpearl.com

To order call 800.847.3275




A single strand golden South Sea cultured pearl necklace. Composed of graduating natural color golden South Sea cultured pearls measuring from 10 to 13.5mm, completed with a 12mm 18K yellow gold pavé-set ball clasp with diamonds weighing 2.4 carats t.d.w. Length 16 inches. \$35,000.

A Pair of golden south sea Earclips. Each composed of a single natural color golden south sea cultured pearl measuring 13mm within a round diamond pavé-set surround, the diamonds weighing approximately 3.4 carats, mounted in 18k yellow gold. \$12,000.

Because of their rarity, tremendous size, and silky lustre, South Sea pearls command premium prices, and are coveted by jewelry aficionados. Gem quality South Sea pearls are extremely rare for two important reasons: one is that the *Pinctada Maxima* oyster used to cultivate them is a wild species –

one can never be certain how many will be available for cultivation. The second reason rests in the pearl's long cultivation period -- any pearl is more likely to become flawed the longer it's left in the oyster, and therefore, large, round, unflawed pearls are always extremely rare.

A close-up portrait of a woman with long, dark brown hair and light blue eyes. She is wearing a white, ribbed turtleneck sweater. She is adorned with a double-strand opera-length necklace and a pair of earrings. The necklace consists of two parallel strands of pearls connected by a chain of small gold links. The pearls are of two types: Golden South Sea pearls with a warm, yellowish-gold hue and White South Sea pearls with a classic white luster. The earrings are stud earrings, each featuring a single white mabe pearl set within a diamond surround.

An opera-length multicolor South Sea Pearl and gold station necklace. Composed of thirty Golden and White South Sea pearls measuring from 9mm to 9.5mm, connected with 14K yellow gold chain. Length 48 inches. \$3,900. Shown on the model as a double strand.

A pair of mabe pearl and diamond earclips. Each composed of a white Australian mabe pearl measuring 13mm set within a diamond surround, .12 carats t.d.w., mounted in 18K yellow gold. \$450.

www.americanpearl.com

To order call 800.847.3275

An opera-length South Sea pearl necklace. Composed of graduated baroque shape white south sea cultured pearls measuring approximately from 9 to 12.5mm, completed by an 18K white gold safety clasp. Length 34 inches. \$5,800.

An opera-length Tahitian multicolor South Sea pearl necklace. Composed of 36 inches of 10 to 12mm natural color black Tahitian cultured pearls, completed with an 18K white gold safety clasp.

A pair of South Sea pearl and diamond earclips. Each composed of a white Australian south sea pearl measuring 12.25mm set within a diamond surround, 1.35 carats t.d.w., mounted in 18K white gold. \$5,500.



A rope-length South Sea pearl and gold station necklace. Composed of twenty-two, white South Sea pearls measuring from 10 to 12mm, connected with 14K yellow gold chain. Shown on the model as a triple strand. Length 66 inches. \$6,800. 33 Inch opera-length. \$3,400.

A rope-length Tahitian pearl and gold station necklace. Composed of twenty-two, black Tahitian South Sea pearls measuring from 10 to 12mm, connected with 14K white gold chain. Shown on the model as a triple strand. Length 66 inches. \$5,500. 33 Inch opera-length. \$2,750.

A cultured pearl and gold drop earring. Composed of two AAA quality Japanese Akoya cultured pearls per earring measuring 8mm each, mounted in a 14K yellow drop setting. \$500.