



AKARI Light Sculpture by
Yasumi Noguchi

Akari Associates
32-37 Vernon Blvd.
Long Island City, NY 11106

Tel. (718) 721-2308
Fax. (718) 278-2348
Email. akari@noguchi.org

Assembly Instructions for Table, Bamboo, Floor, and Ceiling Models

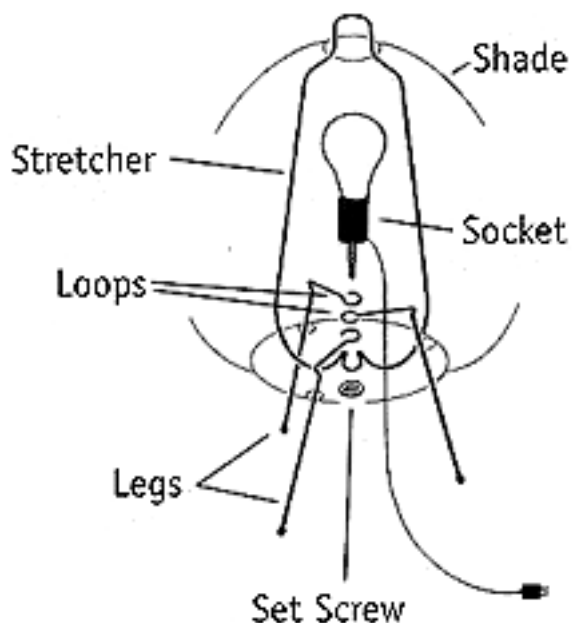
Model: Table

1. Unscrew set screw from socket of cord set.
2. Inset wire legs through loops on bottom rim of shade.
Align loops on legs.
3. Have second person assist in stretching shade into shape by pushing
stretcher into upper rim of shade. Align loop on stretcher with loops on legs.
4. Push end of socket through loops. Secure in position with nut.

Lamp Wattage:

Maximum: 75 watts

Recommended: 25-40 watts



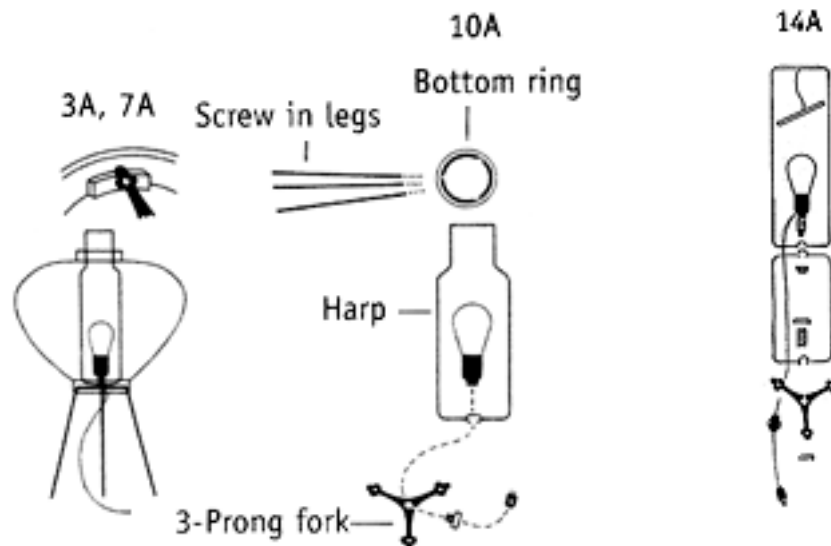
Model: 3A, 7A, 10A, 14A

1. Unwrap all parts, For models 3A, 7A, 10A these should include: 3-prong fork, 3 screw-in legs, harp, shade, cord set. 14A comes with aforementioned parts + extra harp, threaded rod with washers. Cord set comes with on-line on-off switch.
2. Screw legs into 3-prong fork.
3. Connect harp to 3-prong fork using cord set as shown. Tighten with locknut.
4. Slide shade over frame; make sure logo & signature are on bottom of shade.
5. Secure 3-prong fork onto wood supports on bottom ring. Should fit tightly.
6. (Model 10A) After securing bottom ring to 3-prong fork, lift the top ring until it can be hung with the hanging bar which can be adjusted to the proper height.
7. (Model 14A) Connect bottom harp to 3-prong fork with threaded nipple and washers. Top harp has hanging wood crossbar, and connects to bottom harp by passing threaded nipple on bottom of cord set socket through loops on harps and fastening with locknut.

Lamp Wattage:

Maximum: 75 watts

Recommended: 40-60 watts



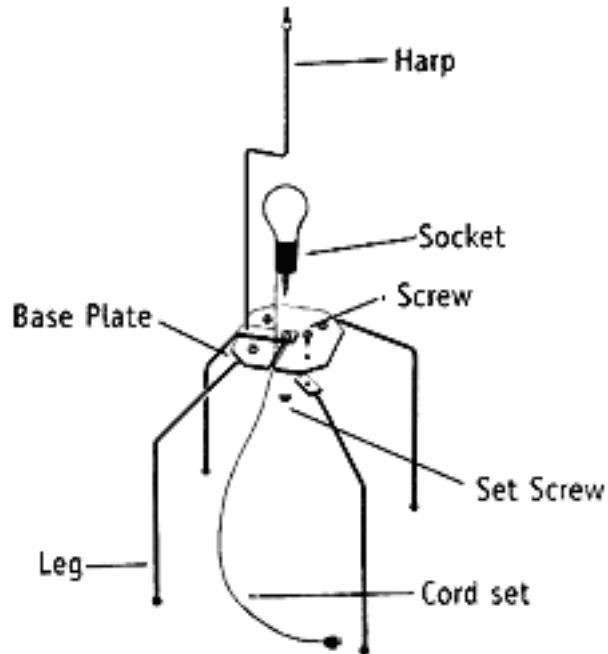
Model: UF1, UF2, UF3

1. Unwrap all parts.
2. Attach legs to base plate with screws. Place assembly on flat surface and adjust legs by bending gently until all four legs rest on surface. Three legged Akari need no adjustment.
3. Place harp on base plate with center holes and slots aligned. Position socket over center hole and secure in place with set screw. (In the event that socket nipple does not penetrate base plate with ease, apply some pressure).
4. Screw in bulb.
5. Place shade over harp and tie to legs with strings that are on bottom rim of shade.

Lamp Wattage:

Maximum: 75 watts

Recommended: 40-60 watts



Models BB1, BB2, BB3 stands

All "BB" Stands come with black cast iron base, bamboo pole, harp, socket, and extension rod for specific models. Different shades use different extension rods, which determine final height.

1. Unwrap all parts. Carefully remove stand from packing material.
2. BB3 should be placed on floor so that bamboo sections are aligned with each other. Pull electrical cord from inside cast iron base so that small bamboo section slides into larger bamboo section. Push extra cord into bottom of base.
3. All bamboo stands should come with a threaded extension rod designed for the particular shade ordered. The lengths are 2", 6", 9", 12".
4. The extension rod should be screwed into the top of the harp.
5. Screw one of the threaded washers onto threaded extension rod, leaving approx. 1/2 inch of room.
6. Attach shade by sliding over harp & extension rod. Some shades will have a crossbar at bottom of shade. This is attached by sliding the crossbar around the bamboo pole between the rubber o-rings. This allows you to adjust the amount the shade is stretched out. Other models only have the top crossbar; this attaches at the top of the extension rod.
7. Secure top crossbar by screwing second threaded washer onto extension rod.

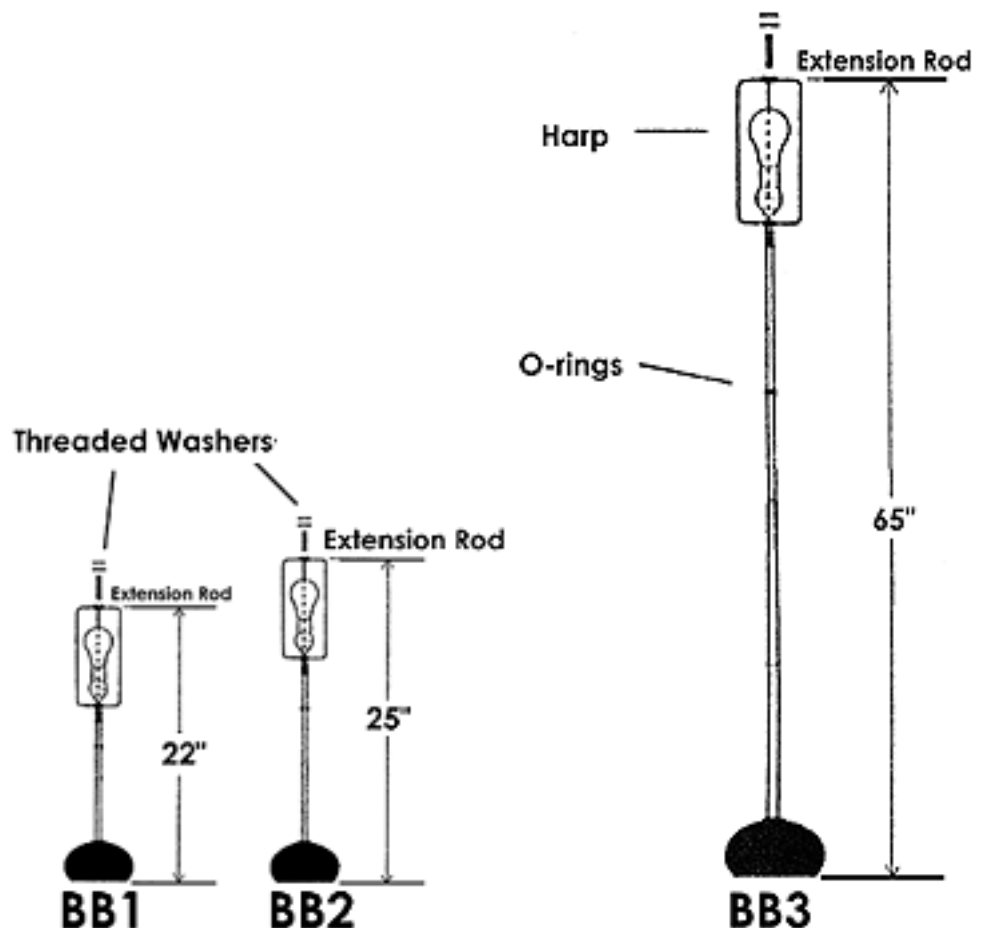
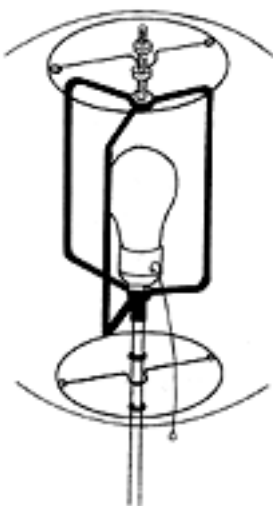
Helpful hints:

Keep stand away from strong wind, high heat, or moisture. When moving stand, pick up stand from the cast iron base, not by the bamboo alone.

Lamp Wattage:

Maximum: 75 watts

Recommended: 75 watts



Model: 33S/ BB3 Stand

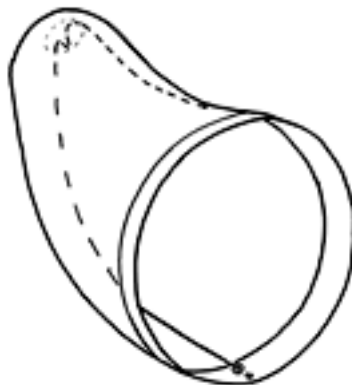
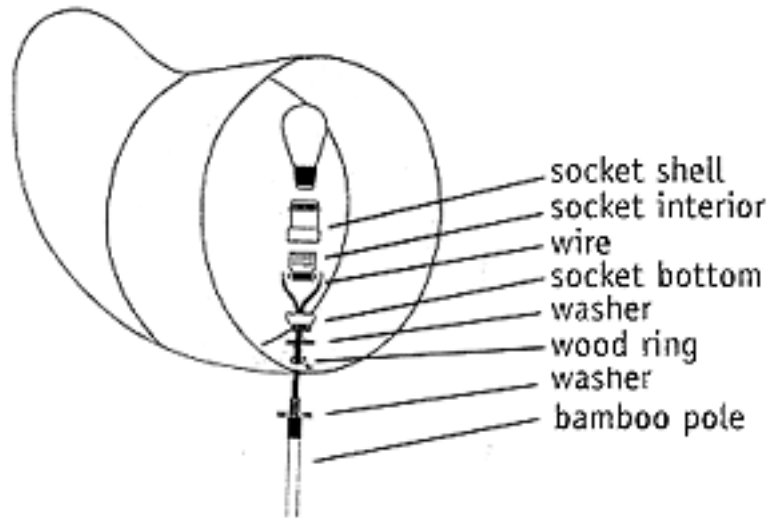
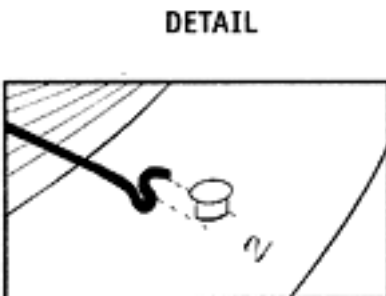
1. First remove wood ring from box. At the top of the stand there will be 2 brass washers. Unscrew the top washer and place the wood ring over the bottom washer, replacing the top washer back on the stem and tightening.
2. Next, take socket and screw socket bottom onto stem. Attach wires to socket and attach socket shell. Install light bulb (75 watts long-life pref.)
3. The 2 horn shapes come with wire stretchers. Install wire stretcher in each, fitting ends over the inside knobs. Be careful not to tear paper or break the thin wood inner ring.
4. Each horn shape has a numerical marking on the inside that corresponds with the marking on the varnished middle ring. Insert horn shape on the side indicated by the markings; they have been fitted individually. The horn shape should fit so its thin inner ring is concealed completely. Have someone help steady the middle ring as you attempt this. (horn shapes should point upward)

Note: An on-line switch has been provided to turn light on and off.

Lamp wattage:

Maximum: 75 watts

Recommended: 40-60 watts



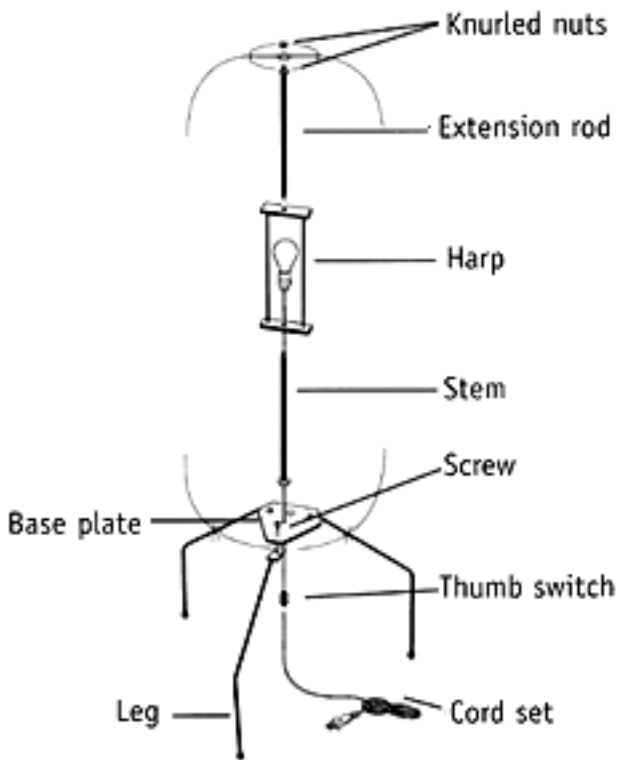
Model: UF4, UF5

1. Unwrap all parts; Socket, harp, stem and base plate come as an assembly with the cord set.
2. Screw stem up tight to harp. This will leave about 1/4" of stem protruding from the harp. Screw socket to stem.
3. Screw base plate to stem and attach legs to base plate with screws.
4. Screw extension rod to top of harp. Lamp with proper wattage bulb.
5. There are two knurled nuts on top end of extension rod. Unscrew top nut. Place shade on the extension rod and secure in place with top knurled nut.
6. Stretch shade and tie bottom edge to legs with strings attached to bottom rim of shade.

Lamp wattage:

Maximum: 75 watts

Recommended: 75 watts



Model: Ceiling/ Wire-In-Kit

For ceiling Akari there are two options available:

(a) Hardwire Kit:

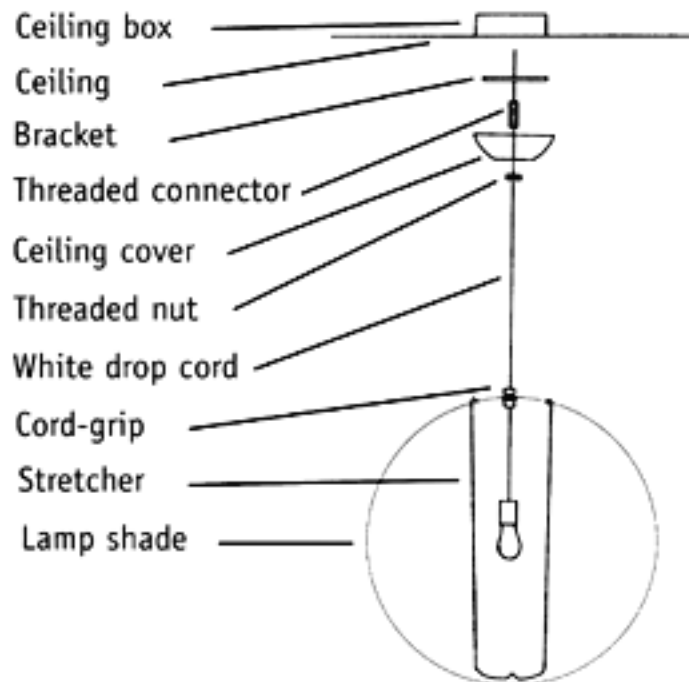
For ceiling box that includes: a round white canopy, 4 feet of white drop cord, socket, etc.

1. Determine the desired height for the shade. Cut and discard extra cord.
2. Run cord through the threaded nut, ceiling cover, threaded connector, and bracket in that order.
3. Connect white/ black cord wires to wires in ceiling box. Connect bracket to ceiling box with screws (not provided), connect threaded connector to bracket. Install ceiling cover, and tighten nut onto threaded connector.
4. Slide cord-grip into position on drop-cord such that when stretcher is attached and the shade installed, the lamp will be centered in shade.
5. Attach stretcher to drop-cord by snapping loop on stretcher into groove in cord-grip.
6. Install shade by pulling and extending over stretcher. Insert stretcher points into corresponding loops on top shade ring.

Lamp wattage:

Maximum: 75 watts (with brass socket)

150 watts (for large globes, with porcelain socket).



(b) Wall-Outlet Swag Kit:

12 feet of black cord, socket, grommet, on-off switch and 2 swag hooks.

1. Using the screws and plastic anchors provided, install one swag-hook on the ceiling where you want the lamp to hang. Install the other sag hook on the ceiling close to the wall, above the outlet you want to plug into.
2. Clip the drop-cord into the swag hooks starting with the one closest to the lamp.
3. Slide the cord-grip into position so that when stretcher is attached and shade is installed, the light bulb will be centered in the shade.
4. Attach stretcher to drop-cord by snapping loop on stretcher into groove in cord-grip.
5. Install shade by pulling and extending over stretcher. Insert stretcher points into corresponding loops on top shade ring.

Lamp wattage: Use recommended lamp wattage from the shade model you are installing.

