



10574 Bechler River Ave
Fountain Valley, CA 92708

Tel: (714)333-1188
Fax: (714)962-2500

www.CVWCorp.com

High Power IR Illuminators

Quality & Performance Redefined

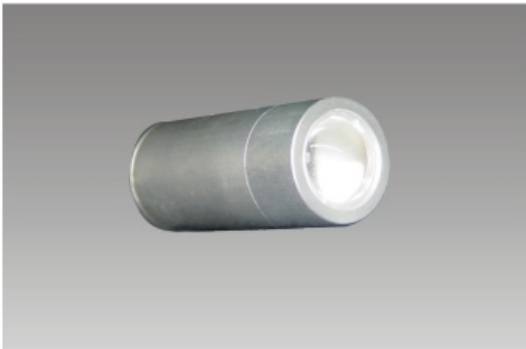
Evidence quality images in zero light, at distances never before possible.

- Clearer, Wider, Longer** – Cybervision West combines pioneering Infrared LED array technology with state of the art electronic and optical components to bring you the ultimate in Day / Night vision efficiency and high power infrared output. Whatever the operational conditions we, as a minimum, will at least double the performance of any comparable product, in any comparable situation.



CV100D (DOME)

Power source	12VDC, external
Power consumption	6W
IR optical output	1,700mW
Half intensity beam angle	120°
IR wavelength	850nm
Operating temperature	-20°C to +60°C
Dimensions	Φ2.5"
Weight	460g



CV100B (Indoor & Outdoor)

Power source	12VDC, external
Power consumption	6W
IR optical output	1,700mW
Half intensity beam angle	30°, 60°, 90°
IR wavelength	850nm
Operating temperature	-20°C to +60°C
Dimensions	Φ35mm X 80mm
Weight	150g



CV100C (Indoor & Outdoor)

Power source	12VDC, external
Power consumption	10W
IR optical output	2,800 mW
Half intensity beam angle	15°
IR wavelength	850nm
Operating temperature	-20°C to +60°C
Dimensions	Φ58mm X 135mm
Weight	300g

*The CV400D camera / CV100D illuminator combination will evenly brighten the whole of a sizable interior room. In laboratory conditions CV100D IR illuminators will allow 'as day' B/W images of rooms to an incredible range of 1,000ft². Whatever the operational conditions, a Cybervision West Dome combination will massively outperform any comparable product, in any comparable situation.

*At present, there is no common definition of 'distance' used by all night vision camera manufactures. If a product claims it can reach a distance of 66ft., it may be true. It may be able to detect a figure in total darkness 66ft. away. However, you may not be able to see the figure clearly. You may not even be able to tell if the figure is male or female. When we say that our products have a certain distance visibility, we mean that the person can be identified at that distance. We define this as 'visible distance'. In terms of the above statement, it would seem appropriate that all other same function products modify the visible distance they claim.